

For Internal Use Only



How to Set Up a Unified Search Interface for Different Cataloging Standards

Revision 14.2.7 (no-frames)

Last update: September 2, 2003

The unified search interface lets you perform simultaneous searches in a number of databases that utilize different cataloging standards. In order to implement this interface in the ALEPH 500 Web OPAC, some changes must be made in the HTML files and some definitions have to be registered in the system. This document includes explanations for the unified search interface in ALEPH's USM01 and UNI01 demo databases.

This document describes the following:

GUEST USER SCENARIO	2
SIGNED-IN USER SCENARIO	7
SYSTEM DEFINITIONS INVOLVED	7

Guest User Scenario

Web OPAC users who do not identify themselves, (that is, they perform searches without signing into the database), are guest users.

The screens involved are as follows (in the `/.alephe/www_f_eng` directory):

- login (*set to find-m*)
- head-1-nobor-usm00 – unsigned user.
- find-m-usm00 and find-m-uni01
- find-code-include
- head-1-nobor-usm01
- head-1-nobor-uni01
- find-m-results-head
- find-m-results-body
- find-m-results-body
- find-m-results-tail
- history-head

In the following example, there are a number of bases to choose for a simultaneous search. If none of the options are checked, or none of them is displayed on the screen (*find-m* HTML file), the system uses, by default, the simultaneous search in the databases defined in the *www_server_defaults* file. Note the Multi-Base banner displayed on the upper menu bar:

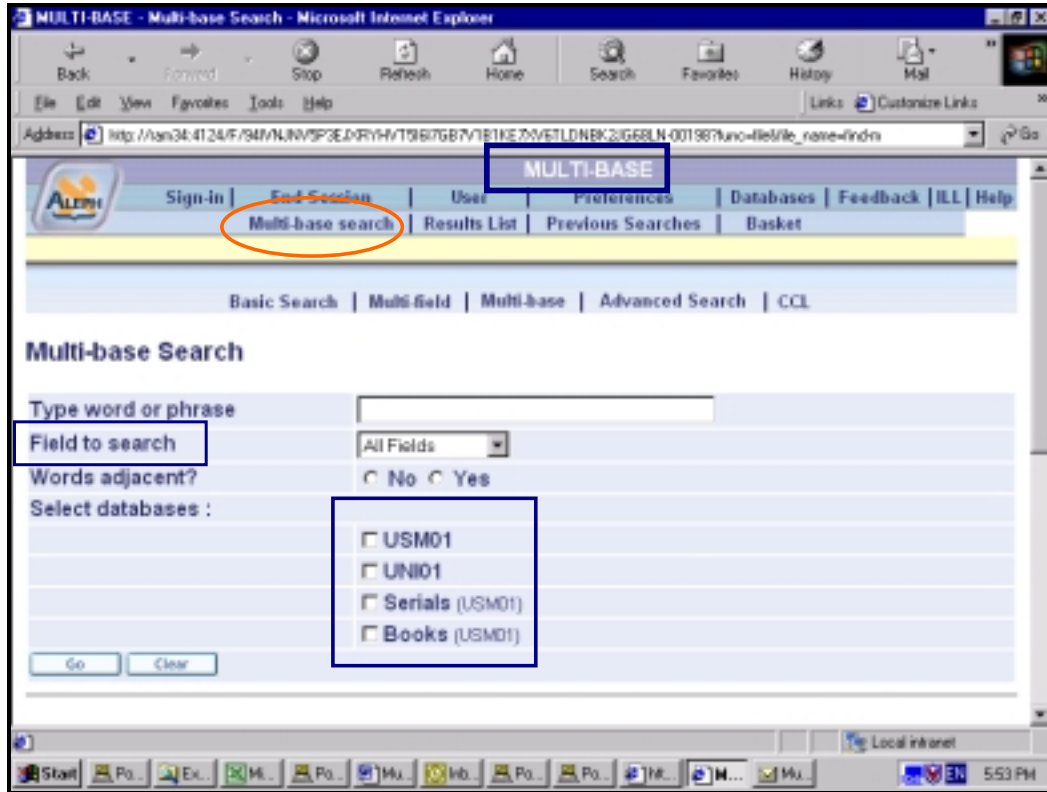


Figure 1 head-1-nobor-usm00

The “Field to search” list must include available indexes from both databases (*/.aleph/www_f_eng/find-code-include* file).

Let us assume that the user selects the USM01 and UNI01 databases and receives the following result screen:

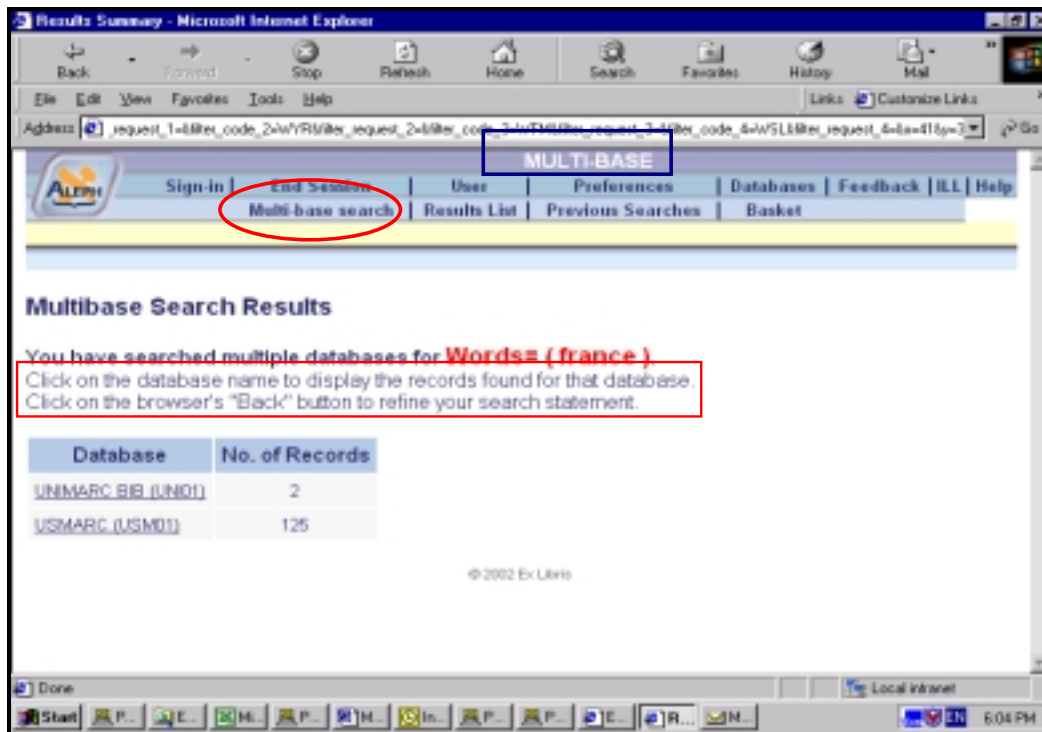


Figure 2 find-m-results-head-usm00

After receiving the search results, the user can click on the name of one of the simultaneously searched databases to display the records for that database: (in this example, UNI01).

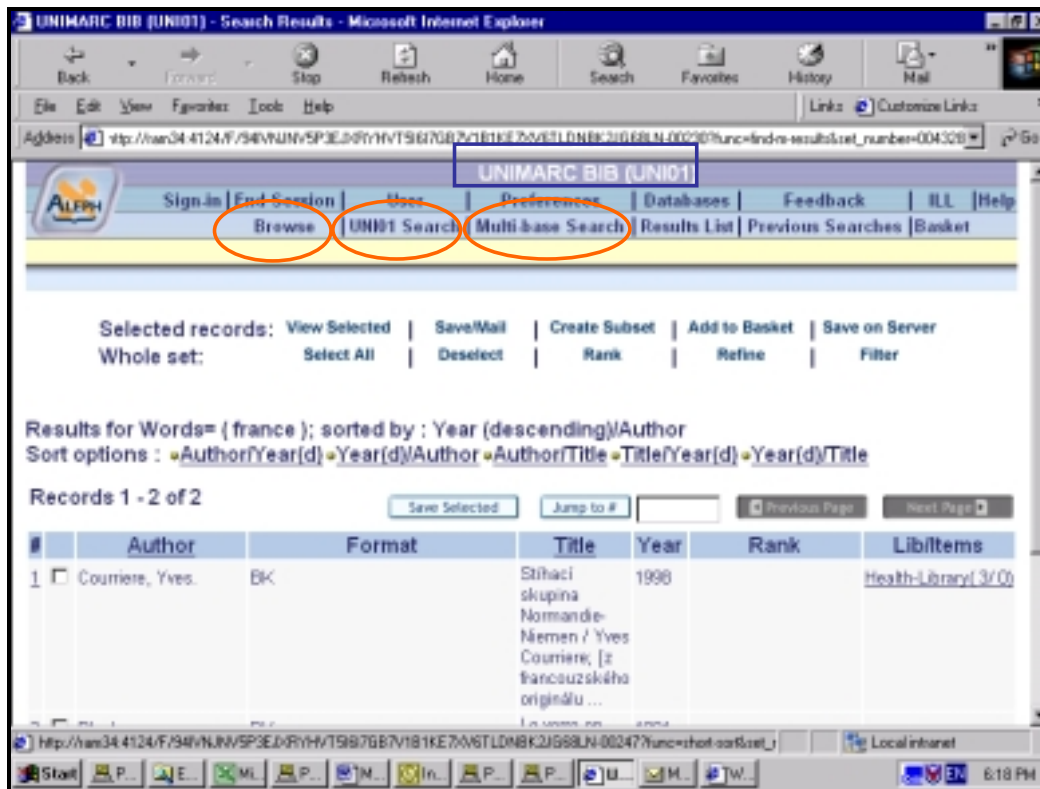


Figure 3 head-1-nobor-uni01

The “Browse” option becomes available for the UNI01 catalog and the standard “Search” option gets a special screen tip reminding the user that the search query activated from this page will be performed in UNI01 database only.

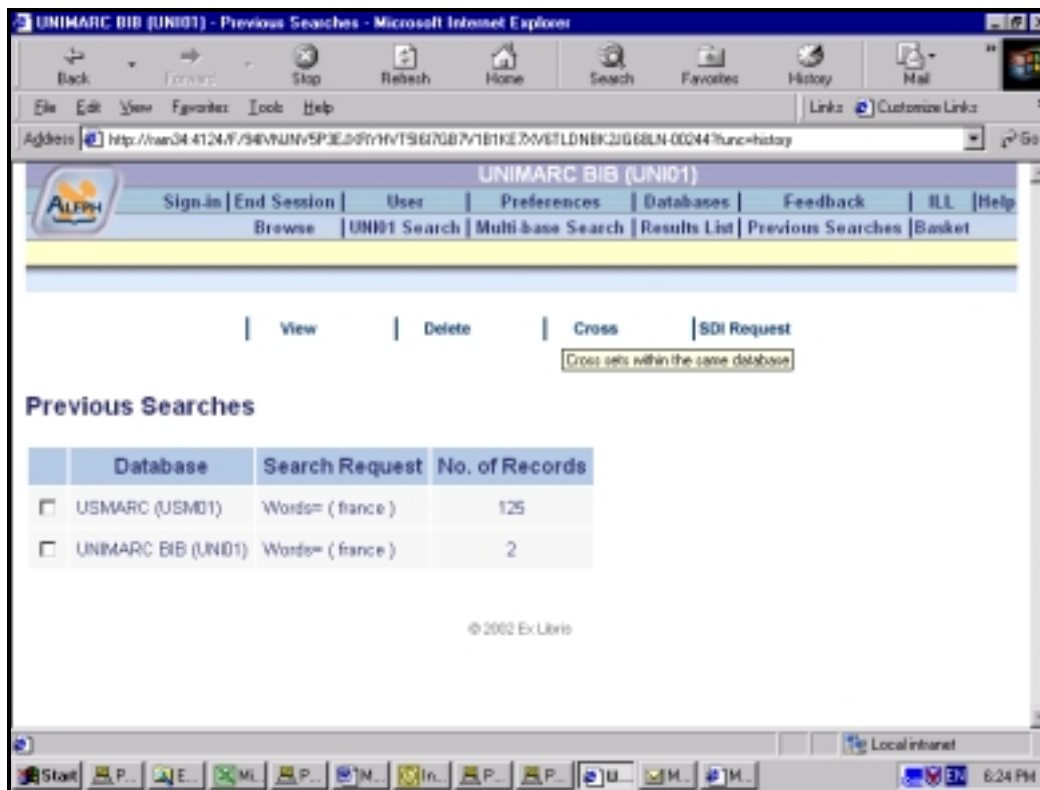


Figure 4 history-head

The “Cross” option now includes a screen tip to remind the user that the Cross operation is allowed only for the sets from the same database.

Signed-in User Scenario

In addition to the screens that are common for both guest and signed-in user modes, the next three screens have to be maintained:

- head-1-bor-usm00
- head-1-bor-usm01
- head-1-bor-uni01

System Definitions Involved

The following lines have to be defined in the *www_server_defaults* file (*/.alephe* directory) :

```
setenv www_parallel_search_base USM01-UNI01
setenv www_login FIND-M
```

```
/.alephe/www_f_eng/service-find-m-acc-head
/.alephe/www_f_eng/service-find-m-acc
/.alephe/www_f_eng/service-find-m-acc-tail
/.alephe/www_server.conf
```

In the */.alephe/tab/www_f_func* file the following lines have to be added:

```
#####FIND-M-RESULTS      www_f_find_m_results
#####FIND-M-ACC          www_f_find_m_acc
```

In the */.alephe/error_eng/www_f_heading* file the following line has to be added:

```
9450L No base was selected!
```

Add the following line line to *tab_service* (*data_tab* directory) in the relevant bases.

```
www_f_service_find_m_acc
```

ALEPH profile and *IP stations profiles* (if defined in the system -Admin module), have to use the “dummy” USM00 database by default. USM000 must be defined for this purpose in the */.alephe_tab/tab_base.lng* file.