



The Aleph Service Pack Mechanism

Version 23

CONFIDENTIAL INFORMATION

The information herein is the property of Ex Libris Ltd. or its affiliates and any misuse or abuse will result in economic loss. DO NOT COPY UNLESS YOU HAVE BEEN GIVEN SPECIFIC WRITTEN AUTHORIZATION FROM EX LIBRIS LTD.

This document is provided for limited and restricted purposes in accordance with a binding contract with Ex Libris Ltd. or an affiliate. The information herein includes trade secrets and is confidential.

DISCLAIMER

The information in this document will be subject to periodic change and updating. Please confirm that you have the most current documentation. There are no warranties of any kind, express or implied, provided in this documentation, other than those expressly agreed upon in the applicable Ex Libris contract. This information is provided AS IS. Unless otherwise agreed, Ex Libris shall not be liable for any damages for use of this document, including, without limitation, consequential, punitive, indirect or direct damages.

Any references in this document to third-party material (including third-party Web sites) are provided for convenience only and do not in any manner serve as an endorsement of that third-party material or those Web sites. The third-party materials are not part of the materials for this Ex Libris product and Ex Libris has no liability for such materials.

TRADEMARKS

"Ex Libris," the Ex Libris bridge, Primo, Aleph, Alephino, Voyager, SFX, MetaLib, Verde, DigiTool, Preservation, URM, Voyager, ENCompass, Endeavor eZConnect, WebVoyage, Citation Server, LinkFinder and LinkFinder Plus, and other marks are trademarks or registered trademarks of Ex Libris Ltd. or its affiliates.

The absence of a name or logo in this list does not constitute a waiver of any and all intellectual property rights that Ex Libris Ltd. or its affiliates have established in any of its products, features, or service names or logos.

Trademarks of various third-party products, which may include the following, are referenced in this documentation. Ex Libris does not claim any rights in these trademarks. Use of these marks does not imply endorsement by Ex Libris of these third-party products, or endorsement by these third parties of Ex Libris products.

Oracle is a registered trademark of Oracle Corporation.

UNIX is a registered trademark in the United States and other countries, licensed exclusively through X/Open Company Ltd.

Microsoft, the Microsoft logo, MS, MS-DOS, Microsoft PowerPoint, Visual Basic, Visual C++, Win32, Microsoft Windows, the Windows logo, Microsoft Notepad, Microsoft Windows Explorer, Microsoft Internet Explorer, and Windows NT are registered trademarks and ActiveX is a trademark of the Microsoft Corporation in the United States and/or other countries.

Unicode and the Unicode logo are registered trademarks of Unicode, Inc.

Google is a registered trademark of Google, Inc.

Copyright Ex Libris Limited, 2021. All rights reserved.

Document updated: August 2021

Web address: <http://www.exlibrisgroup.com>

Table of Contents

1	THE ALEPH SERVICE PACK	5
2	THE SERVICE PACK LEVEL	5
3	PRE-INSTALLATION STEPS FOR THE ALEPH SERVICE PACK	6
3.1	The Aleph Service Pack Excel Spreadsheet	6
4	THE SERVICE PACK INSTALLATION UTILITY	9
5	PREPARING/UPDATING THE ENVIRONMENT	10
	Customer details (util SP 1/1)	10
	FTP settings (util SP 1/2)	11
	SP Download Directory (util SP 1/3)	12
	View Parameters (util SP 1/4)	12
6	DOWNLOADING AND INSTALLING THE SERVICE PACK	12
	Downloading the Latest Service Pack (util SP 2).....	12
	Checking the Service Pack Download Completion (util SP 3)	12
	Installing the Service pack (util SP 4)	13
7	RUN SERVICE PACK UTILITY (UTIL SP 5 /2 - 5/6 AND 5/9)	14
	Service Pack Summary (Plain Format and Excel Format)	15
	PC Files Involved.....	15
	View Optional Implementation Notes.....	15
8	RUNNING THE AUTOMATIC IMPLEMENTATION NOTES (UTIL SP 5/7).....	15
8.1	Running All Implementation Notes (util SP 5/7/2)	15
8.2	Running Selected Implementation Notes (util SP 5/7/3).....	16
8.3	Running AIN for a Single rep_change (Util SP 5/7/4)	16
8.4	Rolling Back Previous AIN changes (Util SP 5/7/5).....	17
8.5	Updating Configuration (Util SP 5/8).....	17
9	DOWNLOADING AND INSTALLING THIRD-PARTY PRODUCT UPDATES.....	17
9.1	Download the Third-Party Product Updates (util SP 6)	17
9.2	Check OS Requirements for Third-Party Product Updates (util SP 10).....	18

9.3	Extract Third-Party Product Updates (util SP 8)	18
9.4	Install the Third-Party Products (util SP 9).....	18
10	GUI COMPONENTS	18
10.1	GUI Distribution	19
APPENDIX.....		21

1 The Aleph Service Pack

An Aleph 500 service pack is an update that includes all changes made since the last Aleph version was made available. It includes bug fixes, refinements, and features, and it is a combination of many individual fixes, thoroughly tested and delivered in a coordinated way.

The Aleph Service Pack is based on the concept of “No Regression”. This means that any change in functionality, which is not a pure bug, is optional, as it needs to be configured in order to be in effect. In other words, if you install a service pack and make no manual configuration changes, your system might not benefit from some elements of the Service Pack, but it will not show any negative effect.

The service pack can be used to download or alter files in the customer’s libraries. You may choose to change files by performing automatic steps, or change them manually according to the Implementation Notes as it was done in previous versions (see section [8 Running the Automatic Implementation Notes \(Util SP 5/7\)](#)).

Minor releases are delivered via the standard Aleph Service Pack mechanism and include both bug fixes and new development items. Upon installation of a minor release (as opposed to a standard service pack), the customer’s configuration tables and data is changed, in some cases, in order to upgrade to the new release.

The SP mechanism supports languages and formats which are integral parts of the Aleph version. Therefore, files will be updated according to your set up.

The Service Pack installation as described in this document is currently available for the Aleph 23 release.

Note:

Once you have installed the new Service Pack on the server, you must distribute at least the executable (.exe) GUI files to all workstations. For further details see section [7 – GUI Components](#) and section [8 – GUI Distribution](#).

2 The Service Pack Level

The Service Pack level indicates the number of fixes made since the version was made available. The Service Pack includes all these changes, but only installs the fixes you do not have in your current level.

To view your current level, use the `ver` command from the command prompt. For example:

```
aleph@il-aleph10(a23_5):~> ver
SUN_OS_2 i386, il-aleph10, Aleph 23.0.1 (21) copy 1, 16-Nov-2015
Oracle 12r1
PDS version: 2.1.5
aleph@il-aleph10(a23_5):~>
```

In the example above:

23 - version

0 - mini release,

1 - service pack number

21 - last change number

The Aleph Release Notes are published on the Ex Libris Documentation Center as an Excel spreadsheet (you can also examine known singular rep changes via the knowledgebase of the CRM.)

The release notes contain the change number, problem description, solution, module, Support Incident number, PC files, and the Implementation Notes themselves. The naming convention of the Excel files is as follows:

```
ALEPH-<version number>-ServicePack-<Service Pack number>.xls.
```

For example:

```
ALEPH-23.0-ServicePack-1.xls
```

Implementation Notes provide the procedures that should be taken in order to effect a certain change. These procedures are always optional as stated in the beginning of this document. You do not need to perform them, or you can postpone them to a future date. The Aleph Implementation Notes are included in the Aleph Release Notes as described further on.

3 Pre-Installation Steps for the Aleph Service Pack

Do not start the installation process before making sure that there is sufficient disk space available. Make sure that your free disk space is at least twice the size of the sp.tar file (saved to \$alephm_scratch/sp by default).

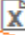
3.1 The Aleph Service Pack Excel Spreadsheet

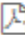
To decide if you should download the service pack, review the changes that are included in it before the installation. Check the knowledge base on the CRM or log on to the [Ex Libris Documentation Center](#) and download the Excel spreadsheet found at Home > Aleph > Release Notes > Version 23: Service Packs and examine the sheet:

Home » Aleph » Release Notes

Version 23


Service Packs

 [ALEPH-23.0-ServicePack-1](#)

 [The Aleph Service Pack Mechanism - sp 23](#)

This spreadsheet includes three sheets as follows:

- The first sheet is an introduction for the current service pack. It contains a description of the important changes that were done in this service pack. PC files that were modified and security items are also mentioned on this page.



Service Pack No:
23.0.1 (21)

PC Files Modified:

```

.\circ\bin\circ.exe
.\catalog\bin\catalog.exe
.\acq\bin\acq.exe
.\ill\bin\ill.exe





```

Highlights:

* A new "fix" routine 'fix_doc_sort_505' is developed.
It can be used in manage-18 (Load ALEPH Sequential MARC Records).

The next service pack release for v.23 is scheduled for:
May 2, 2016

Introduction | Rep_change 1-21 | +

- The second sheet contains changes, description, and Implementation Notes from the first rep change of the current service pack to the last rep change of the current service pack.
- The third sheet contains change description and Implementation Notes from the first rep change of the version release to the last rep change of the current service pack.

Note: Technical changes are not included in the reports. Therefore, there might be gaps in the numbering of the displayed changes. For example, change number 115 is not displayed due to a technical change.

A	B	C	D	E	F	G
Change Number	Description	Solution	Related Documentation	Implementation Notes	Auto	Module
1	ILL-When a lending request is created and the borrower is not registered, the patron creation fails. The problem is relevant only when there is no patron record (Z303) for the ILL partner (Z700).	This has been corrected. Now the patron is successfully created.		Restart ue_17 in ILLSV		ILL
3	GUI-ACQ: The Bulk Ordering Printout doesn't always contain all the orders information. In the information printout of Bulk Ordering (acq-multi-order-info), some of the orders might be missing. Sometimes all of them are missing and no table appears in the printout.	This has been corrected. Now all orders information and related items are displayed in the printout.		Not Required		Acquisitions
4	MAB format- The program expand_doc_bib_hol_mab does not display HOL fields from expand programs. Relevant only for MAB customers. The expand program expand_doc_bib_hol_mab (added	This has been corrected. Now virtually expanded fields from the HOL record can also be expanded into the BIB record using a specific expand routine BIBHOL-MAB.		1. When using expand_doc_bib_hol_mab, if one wishes to include into the BIB record virtual fields from the HOL (i.e. created by an expand program in HOL), the expand program must be defined in the HOL		Cataloging

- There might be more sheets that contain specific guidelines for minor releases or PDS changes.

When reviewing the implementation notes, make sure that the whole instruction is displayed. In old versions of excel you must double click the cell in order to see it.

If you choose to run all of the automatic Implementation Notes (AIN), you may skip the following instructions.

The **Auto** column stands for Automation. It is used to indicate if there is an Automatic Implementation Note for this specific change. To have Aleph implement the Implementation Note automatically, change the “Auto” column which is set to “No” to “Yes” so this specific step could be run as will be described further on.

E Implementation Notes	F Auto	G Module
To display the new column, add the following line to ./usm01/pc_tab_col.eng: PC_COURSE_LIST L Note 09 010 it map Z108-NOTE exists	No	Circulation

After selecting the relevant changes, save the Excel sheet as type “*.csv”:

File name: ALEPH-23.0-ServicePack-1.csv

Save as type: CSV (Comma delimited) (*.csv)

Authors: Oren Maurer Tags: Add a tag

Hide Folders Tools Save Cancel

The csv file should be sent via FTP to the server’s location **/tmp**.
 The csv file can have any name and must end with the extension .csv.
 If there is more than one csv files under /tmp the one with the latest date is taken. For more information, see [Running the Automatic Implementation Notes \(Util SP 5/7\)](#).

Note: The delimiter for the csv file might change between different PCs, according to the "List separator" settings in "Regional and Language options". The recommended delimiter is a comma (.). It is also possible to use a semicolon (;).

4 The Service Pack Installation Utility

The Service Pack Utility (Util SP) is an interactive routine that downloads the latest Service Pack from the Ex Libris FTP server to the customer’s machine and installs it.

```

Library Utilities
=====
A. File Administration and Building
C. Monitor Batch Jobs
D. Online Store/Restore Administration
E. Monitor Background Jobs
F. View Procedures and Files
G. Tables for Defining Database Structure
H. Library and Installation Report (Files, Tables and Definitions)
I. Formatting Data (PC, WWW, Reports)
J. Web and Server Configuration
K. ILL Tables
L. GUI Tables
M. GUI CATALOGING Tables
N. Z39.50 Management
O. ORACLE Management
P. Unicode Tables
Q. Data Loading, Import and Export Tables
  
```

```

R. Multimedia
S. Statistics
SP. Download and install the latest Aleph Service Pack
W. Server and Daemon Management (Monitor, Stop, Start, Log Files)
X. Clean Up
Y. Node Management

```

Through the util SP menus you can configure parameters to download the latest available Service Pack, check the download, and receive an automatic e-mail confirmation after the download is completed.

Depending on your system setup, the installation process may take a while. In order to use the Service Pack management utility, log in to the Aleph application. Make sure to log in to the appropriate slot.

Run:

```

>>dlib <library-name>
>>util
>>sp

```

Note that at any step of the menu stage you can select “Exit” or press **Enter** to return to the previous menu.

The Service Pack Utility contains 10 options:

```

SP.  Service Pack Management
-----
    0.  Exit Procedure
    1.  Prepare/Update Environment
    2.  Download latest SP
    3.  Check SP Download status
    4.  Install SP
    5.  Run SP Utility (view implementation notes)
    6.  Download 3rd party products update
    7.  Check 3rd party product download status
    8.  Extract products updates
    9.  Update 3rd party soft links
    10. Run Third party product OS pre checks

Please select [exit]:

```

5 Preparing/Updating the Environment

```

SP.1. Environment Setting
-----
    0.  Exit Procedure
    1.  Customer details
    2.  FTP settings
    3.  SP Download directory
    4.  View Parameters

Please select [exit]:

```

Customer details (util SP 1/1)

This step configures and updates the following parameters used in later steps. You are asked to enter values or confirm the default ones. Make sure to receive in advance the relevant information from Ex Libris:

- Your Ex Libris customer code
- Your mail address
- Language

These parameters are saved in case you want to use util_sp again at a later date.

```

SP Customer details
-----
Enter new values or press <Enter> to keep existing

Ex Libris customer code (country code + customer) [972DAN]:

Customer mail address for download status notifications (leave empty
for none) [Danny.Perlman@exlibrisgroup.com]

If you want to change the language please type it now [english]:
(This is an option for future usage)

Configuration summary:
-----
Language:                english
Customer code:           972DAN
Notification address:    X.Y@exlibrisgroup.com

Press <Enter> to continue Press

```

Note that after running util SP 1/1 the sp.config file is created under the \$alephe_root directory. This file should not be edited. If there is a need to modify the file such as when there is a need to define special FTP conditions, consult the Ex Libris Office before implementing the change.

FTP settings (util SP 1/2)

Select the FTP server for SP download:

```

SP FTP settings
-----
Enter new values or press <Enter> to keep existing

Select FTP server number for SP download:

1) Europe                downloads-eu.hosted.exlibrisgroup.com
2) USA/Asia Pacific     downloads-na.hosted.exlibrisgroup.com
3) Asia                  downloads-ap.hosted.exlibrisgroup.com
4) Canada                downloads-ca.hosted.exlibrisgroup.com
5) China                 downloads-cn.hosted.exlibrisgroup.com
<Enter> to keep current (downloads-eu.hosted.exlibrisgroup.com)
FTP user for SP download [aleph_23_sp@customers.gl]:

Configuration summary:
-----
FTP server:              downloads-eu.hosted.exlibrisgroup.com
FTP user:                aleph_23_sp@customers.gl

Press <Enter> to continue

```

SP Download Directory (util SP 1/3)

It is possible to configure the SP Download directory. Enter the path for SP download.

View Parameters (util SP 1/4)

You can view your defined settings:

```
Configuration summary:
-----
FTP server:                downloads-eu.hosted.exlibrisgroup.com
FTP user:                  aleph_23_sp@customers.gl
Language:                  english
Service pack download dir: /exlibris/aleph/a23_5/alephm/scratch/sp
Customer code:             972EXL
Notification address:      x.y.sample.name@exlibrisgroup.com

Press <Enter> to continue
```

6 Downloading and Installing the Service Pack

Downloading the Latest Service Pack (util SP 2)

This step runs the download according to the parameters defined in the previous step. The latest available Service Pack is downloaded.

You receive an e-mail when the download is complete.

```
Dear Customer,
The ALEPH Service Pack download has been successfully
completed.
Service Pack 118.
il-aleph03 ALEPH 23 copy 9

You may continue with the SP installation steps
```

Checking the Service Pack Download Completion (util SP 3)

Check the integrity of the downloaded files and monitor the download progress by performing util sp 3.

For example,

```
FTP still running
1 file(s) of total 5 completed (20 %)
press <Enter> to continue
```

At the end of the download process, a message is sent by the system. This message reports if the process succeeded or failed. If it failed, the message specifies the reason.

Note:

If there is a delay between setting the service pack download steps and the actual service pack installation, do not delete the SP download directory and do not remove the service pack configuration file `$alephe_root/sp.config`. Only edit this file with util SP.

Installing the Service pack (util SP 4)

This step runs the Service Pack installation. The latest Service Pack is installed.

```
Welcome to Service Pack 1-118 installation utility.
Your current Service Pack level is .
Options fast = N    initial = N.

0. Exit Procedure
1. Install Service Pack 118
2. View Service Pack summary (Excel format)
3. View Service Pack summary (plain format)
4. View PC files involved
5. View optional implementation notes
6. Update Configuration
```

Note:

Before the service pack installation, it is highly recommended to run third-party product updates. For more information, see [Downloading and Installing Third-Party Product Updates](#).

Before running this step, also make sure that Apache is down and that aleph_shutdown has been performed.

It is required for the first SP installation, to fill in several parameters regarding the library set up.

This is essential for the SP mechanism (some of the SP utilities use the configuration; e.g. AIN functionality).

If you have not yet filled in all required details, the following message is displayed:

```
Please select [0]: 1
Please set up the configuration first (menu item 6). Press any key
...
```

The set up configuration menu can be found under menu item 6:

```
Welcome to Service Pack 1-118 installation utility.
Your current Service Pack level is .
Options fast = N    initial = N.

0. Exit Procedure
1. Install Service Pack 67
2. View Service Pack summary (Excel format)
3. View Service Pack summary (plain format)
4. View PC files involved
5. View optional implementation notes
6. Update Configuration
```

The following menu is displayed:

```
Define configuration parameters
-----
0. Exit
1. View Current Parameters
2. Update Parameters

Please select [0]:
```

It is possible to view the set up or to update it.

When choosing to update the parameters you will be asked to fill in:

- **Libraries definition** – Specify the customer libraries in the u-tree (types ADM, BIB, USR etc.). It is possible to set up the list of libraries to be handled by the "Automatic Implementation Notes" mechanism. You can edit the space-delimited list with the "vi" editor instead of editing it manually.
- **Notification e-mail addresses definition** – Where to send log files or error messages.
- **Languages definition** – Specify the code of the languages used on the server - language files (.lng) and language directories (_lng).

You may return and update the configuration whenever it is required by performing util SP 5/8.

7 Run Service Pack Utility (util SP 5 /2 - 5/6 and 5/9)

This step runs the sp.utility routine which enables the following:

```
Welcome to Service Pack utility.
Your current Service Pack level is 118.

0. Exit Procedure
2. View Service Pack summary (Excel format)
3. View Service Pack summary (Plain format)
4. View PC files involved
5. View optional implementation notes
6. View installation log
7. Run Automatic Implementation Notes
8. Update Configuration
9. Uninstall Service Pack 3556
```

When choosing one of the reporting options (menu options 2, 3, 4, and 5), the following menu appears:

```
View Service Pack summary (Plain format)

0. Exit Procedure
1. Create report for levels 1-320
2. Create report for this Service Pack (118 - 320)

Please select [0]:
```

To create a report for the entire Service Pack, select option 1.

To create a report of the fixes of the recent Service Pack only, select option 2. While Plain Format, PC Files, and Implementation Notes Reports can be viewed on the server, the Excel report produced should be sent via FTP to the PC. The Excel sheet is created on the server in the directory \$aleph_dev/service_pack/[nnnn-yyyy] where nnnn and yyyy are the range of rep changes in the service pack. It is recommended to view the Implementation Notes in the documentation center.

Service Pack Summary (Plain Format and Excel Format)

This report creates a text file with a description of the corrections.

PC Files Involved

This report shows all GUI files that are involved. They are classified under two categories:

- Executable files (To be distributed)
- Configuration files (Not to be distributed)

For more information, see the section on GUI components below.

View Optional Implementation Notes

As stated above, the optional Implementation Notes contain instructions for the actions required for some of the corrections. The report contains only those changes that have Implementation Notes.

The service pack utility also includes an Uninstall option (util SP 5/9). This option restores the system to its configuration prior to the installation of the Service Pack. After a Service Pack is uninstalled, the installation log is saved under directory `$aleph_dev/service_pack/[nnnn-yyyy]` where `nnnn` and `yyyy` are the range of rep changes in the service pack.

8 Running the Automatic Implementation Notes (Util SP 5/7)

Most of the Implementation Notes (which provide the procedures that should be taken in order to effect a certain change) have automatic steps. This Utility runs those steps.

```
Welcome to the AIN (Automatic Implementation Notes) main menu
You may choose to run all imp. notes since rep_change 118 or only
selected steps.

0. Exit

2. Run ALL Implementation Notes
3. Run Selected Implementation Notes (as marked in the Excel
Sheet)
4. Run Implementation Notes for a single rep_change
5. Rollback previous AIN changes
Please select [0]:
```

Note that not all Implementation Notes have AIN steps. Review the Excel sheet and implement the changes manually.

8.1 Running All Implementation Notes (util SP 5/7/2)

This option relates to all rep_changes where the **IN Automation** field is set to **Y** only in the “customer’s increment”. For example, if the customer was in Service Pack level #50 before installing Service Pack #100, this option considers only rep_changes #51 - #100.

8.2 Running Selected Implementation Notes (util SP 5/7/3)

The Excel sheet for selecting what Implementation Notes to run is created by util SP 5/2 (see [Service Pack Summary \(Plain Format and Excel Format\)](#)). Alternatively, you can use the second sheet of the aleph service pack Excel spreadsheet.

Change “No” to “Yes” in the Auto column for the Implementation Notes you want to have implemented automatically. Only the Implementation Notes with “No” in “Auto” column are relevant.

After selecting the relevant changes, save the Excel sheet in csv format. For more information, see [The Aleph Service Pack Excel spreadsheet](#) section.

The selected Implementation Notes from the Excel sheet (in “csv”) should be sent via FTP to the server under **/tmp**.

The filename is not important. The last updated file in the **/tmp** directory with the .csv extension is taken.

8.3 Running AIN for a Single rep_change (Util SP 5/7/4)

The user provides a single rep_change number with which to perform AIN. This number has to be within the customer’s Service Pack increment.

Whenever an AIN is executed for a single rep_change, selected rep_changes or ALL rep_changes, a summary report e-mail is sent:

Starting AIN at: 2014-03-02 11:20:58

Date & Time	Rep. change	Result
2014-03-02 11:20:59	11	OK

End AIN at: 2014-03-02 11:21:47

11.log

Rep_change 11. Implementation notes from report_change.dat:

To implement this change, follow the instructions below:

1) Replace the following line in `./[ILL Library]/form_eng/ill-lend-item-list.xml`:
<xsl:with-param name="value" select="concat(/z416-ill-unit, ' ', /z700-name)"/>
By
<xsl:with-param name="value" select="concat(/z416-ill-unit, ' ', /lender-name)"/>

2) Run util/I/6.

Saving backup `/exlibris/aleph/a22_5/usm40/form_eng/ill-lend-item-list.xml.ain.35`
Updating: `/exlibris/aleph/a22_5/usm40/form_eng/ill-lend-item-list.xml`
At the end of all steps, util-i-6 will run in the following libraries: usm40

Some steps might fail due to configuration changes in the files involved. If this happens, manually implement the changes.

8.4 Rolling Back Previous AIN changes (Util SP 5/7/5)

When an AIN is executed, the state before execution is preserved, such as backup of u-tree configuration files. At the same time, a rollback script is prepared, containing the necessary actions to reverse any changes done by the AIN mechanism. The rollback action covers all AINs performed before its activation – be it a single rep_change, selected ones, or ALL.

Note:

The AIN log directory is located under the Automatic Implementation Notes (AIN) directory. For example:

```
/exlibris/aleph/a20_1/service_pack/3557-3632/ain/logs/
```

This directory contains information about the changes that were implemented by the AIN that are included in the summary report e-mail that is sent after AIN implementation.

8.5 Updating Configuration (Util SP 5/8)

This step configures and updates the parameters used in the AIN.

You are asked to enter the values or confirm the default ones for the following parameters. Make sure to receive in advance the relevant information from Ex Libris:

- Libraries to be handled for AIN
- Your email address - for notification about AIN implementation
- Languages for implementing AIN

These parameters are saved in case you want to use util_sp again at a later date.

Note:

When updating the Libraries to be handled parameter with option E – edit the list using VI – use the following format:

```
setenv uk_libraries "loc10 tst01 tst10 tst40 tst50 tst60"
```

Do not remove the text setenv uk_libraries. Enter the space delimited list of libraries within the quotation marks.

9 Downloading and Installing Third-Party Product Updates

9.1 Download the Third-Party Product Updates (util SP 6)

This step runs the download according to the version of Aleph and the operating system that you are using. The latest available package is downloaded.

Select option 6 in the main util_sp menu to start the download. You are asked if you want to change the default ftp directory:

```
The third party download utility will use wget to download the
required packages
Download directory will be /exlibris/ftp_from_exlibris
If you want to change it please enter the new path now or
<ENTER> to keep
```

Select option 7 from the main util_sp menu to see the download progress log. Press :q to quit the log.

9.2 Check OS Requirements for Third-Party Product Updates (util SP 10)

Step 10 checks for the existence of all operating system packages necessary for the normal functioning of updated third-party products. This check can only run after the download is completed. It is recommended to run this step before installing the third-party products.

If some OS packages are missing, request from your local IT staff to install them.

9.3 Extract Third-Party Product Updates (util SP 8)

Select option 8 from the main util_sp menu to extract the downloaded products. All products are installed in the /exlibris/ftp_from_exlibris directory.

9.4 Install the Third-Party Products (util SP 9)

This step moves the soft links from the previously existing third-party products to the newly installed products.

Before running this step, make sure that Apache is down and that aleph_shutdown has been performed.

Select option 9 in the main util_SP menu to complete the installation of the downloaded products. Start up Apache and the application.

10 GUI Components

All PC-related files are downloaded under the server-side ./aleph/pc_exe directory. Usually, there are three files in the pc_exe directory:

- gui500.exe - GUI installation package
- net500.exe - Network GUI installation package
- off500.exe - Offline Circulation module

When a Service Pack is installed, these three files are replaced and the old files are backed up with an sp.NN extension.

In addition, individual GUI files are downloaded to two directories:

- ./aleph/pc_exe/sp_exe
- ./aleph/pc_exe/sp_conf

GUI files that have changed are placed under these directories with a full path, for example, ./aleph/pc_exe/sp_exe/catalog/bin/catalog.exe. Executable files

are placed under the `sp_exe` directory and configuration files are placed under the `sp_conf` directory.

If the file already exists from previous Service Pack installations, it is backed up with an `sp.NN` extension.

Note that once you have installed the new Service Pack on the server, it is highly recommended to distribute at least the executable (.exe) GUI files to all workstations.

10.1 GUI Distribution

The easiest way to distribute the changed GUI executable files is to use Version Control. In this case, make sure that the definition in `alephcom.ini` is set up as follows:

```
[VersionControl]
Type=sp_exe
```

VersionCheck

Version Check is a tool used to distribute GUI client files from a central server to an individual workstation. Integrated inside all GUI modules, it automatically informs you about the latest updates and replaces the older files with the new ones at your request.

There are two ways of accessing Version Check:

- Automatically: The Aleph version check message appears once a day when starting the first Aleph application.
- Manually: From the update version window located under the Aleph menu.

```
Type=sp_conf
```

`SP_conf` can be used whether the GUI Configuration such as *.dat and *.ini files were changed or not by the customer.

The mechanism of the version check merges the updated file with the customer's file.

The Version check for updating configuration files works as follows:

1. Inserts new lines.
2. Updates lines but does not alter the strings that were changed by customers.
3. Deletes lines that are not relevant.

For more information regarding the Version Check, refer to the *Aleph 23 Staff User's Guide - General*.

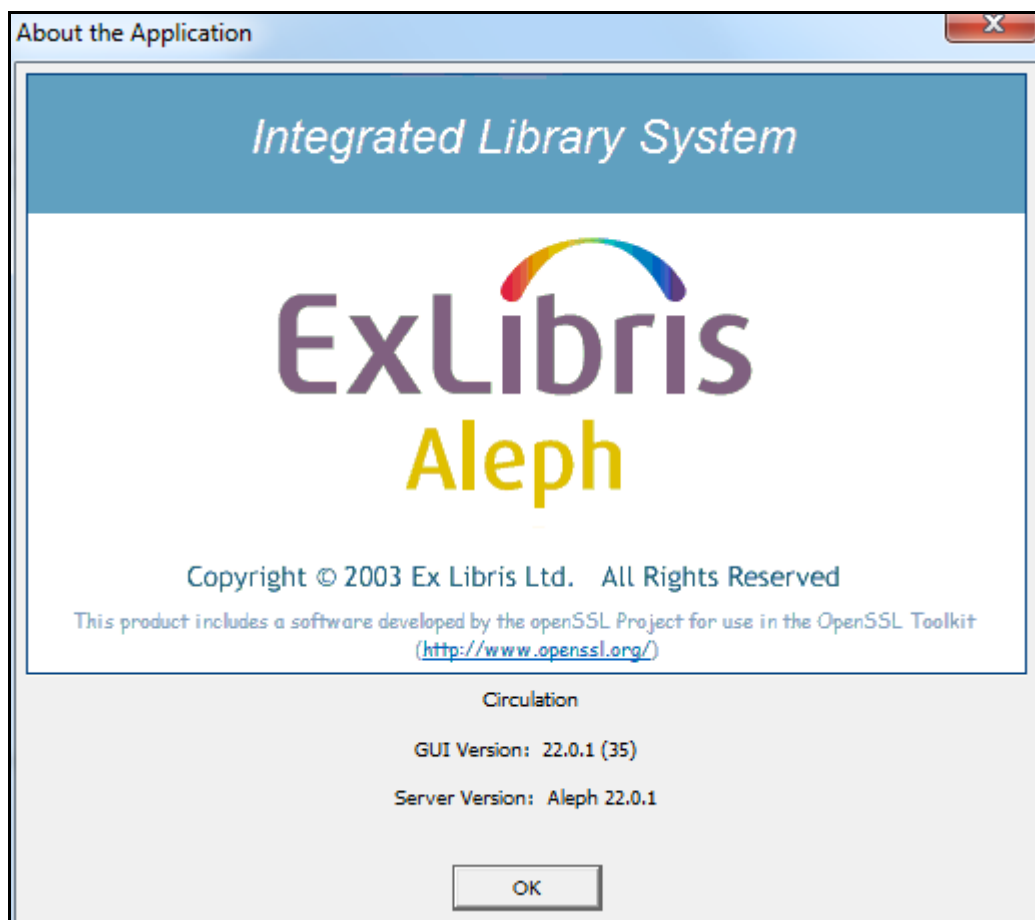
Note : It is possible to override existing configuration files with the service pack files, by placing the files in the `$aleph_dev/aleph/pc_exe/local_conf` directory. After setting the Version Check Type to `local_conf`, and clicking **Update All** or **Update**, the target files are overridden with the server side files.

```
[VersionControl]
RunAtStartup= Y/N
```

The RunAtStartup parameter controls whether the version control check is run once a day when opening the first Aleph application. Selecting the *Run Version at Startup* option in the Update Version window automatically sets this value to **Y**. Clearing the **Run Version at Startup** option in the Update Version window automatically sets this value to **N**.

In order to distribute customized library-specific GUI configuration files such as *circ.ini* or *print.ini* via the Version Check (this may be necessary when there are multiple groups of librarians each using unique setup files), refer to Appendix .

Clicking **Help > About** in the GUI displays the GUI and server version that you are using.



After installing the service pack, it is recommended to examine, the Help/About dialog box. The information provided there indicates whether the GUI and server are synchronized, meaning that they both have the same service pack number.

Appendix

GUI Distribution

After the installation of the service pack, the update of the GUI PC files from the server works as follows:

The service pack places new PC files on the server under the directory: `$aleph_dev/aleph/pc_exe`. The executable files are under `$aleph_dev/aleph/pc_exe/sp_exe`, while the configuration files are under `$aleph_dev/aleph/pc_exe/sp_conf`. The entire GUI tree, as it appears on the PC, exists under each of the above directories.

For example, if a new `catalog.exe` file is included in the service pack then it is placed on the server as follows:

```
$aleph_dev/aleph/pc_exe/sp_exe/catalog/bin/catalog.exe
```

Similarly, if a new `print.ini` file for the acquisitions module is included in the service pack then it is placed on the server as follows:

```
$aleph_dev/aleph/pc_exe/sp_conf/acq/tab/print.ini
```

Version Check works as follows:

If the user has the following in file `AL500/alephcom/tab/alephcom.ini`:

```
[VersionControl]
Library=ABC01
Type=sp_exe
```

and Version Check is run, files are taken from the server under directory `$aleph_dev/aleph/pc_exe/sp_exe/`

The files come from whichever server is defined in `AL500/alephcom/tab/library.ini` for library `ABC01`

Likewise, if the user has the following in file `AL500/alephcom/tab/alephcom.ini`:

```
[VersionControl]
Library=DEF01
Type=sp_conf
```

and version control is run, then files are taken from the server under directory `$aleph_dev/aleph/pc_exe/sp_conf/`

The files come from whichever server is defined in `AL500/alephcom/tab/library.ini` for library `DEF01`

In most cases, the `Library` parameter is the name of the bibliographic library. In cases where service pack is installed first on a test server and later on the production

server, note that the new PC files come to the PC only if the `library.ini` includes the IP of the server on which the service pack is installed.

Version control, as described above, automatically downloads the files from the server to the PC and in doing so overwrites existing files on the PC excluding `*.dat` files and `*.ini` files which are automatically synchronized as described above. It is possible, but not necessary, to do as follows in order to be sure that only certain configuration files are downloaded to PC. Usually this is performed by the systems librarian.

1. Create directory on server such as `$aleph_dev/aleph/pc_exe/sp_final/`
2. Copy executable files from `sp_exe` to `sp_final`
3. Edit (if desired) configuration files on server under `sp_conf` and copy to `sp_final`
4. Users have the following defined in `alephcom.ini`

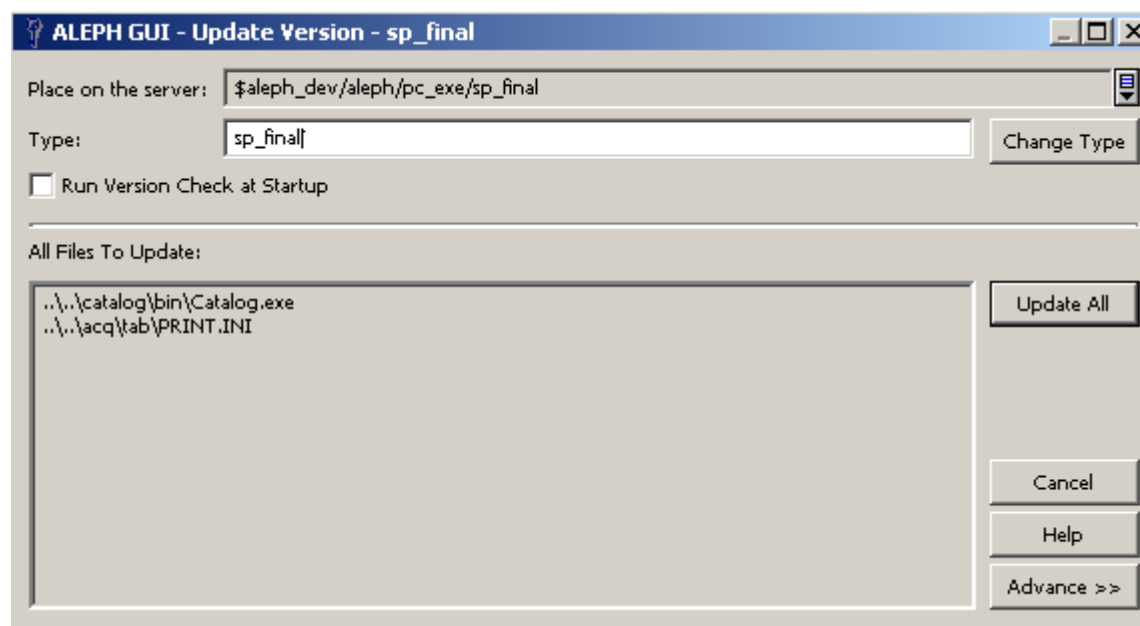
```
[VersionControl]
Type=sp_final
```

In this case the following are updated to the PC:

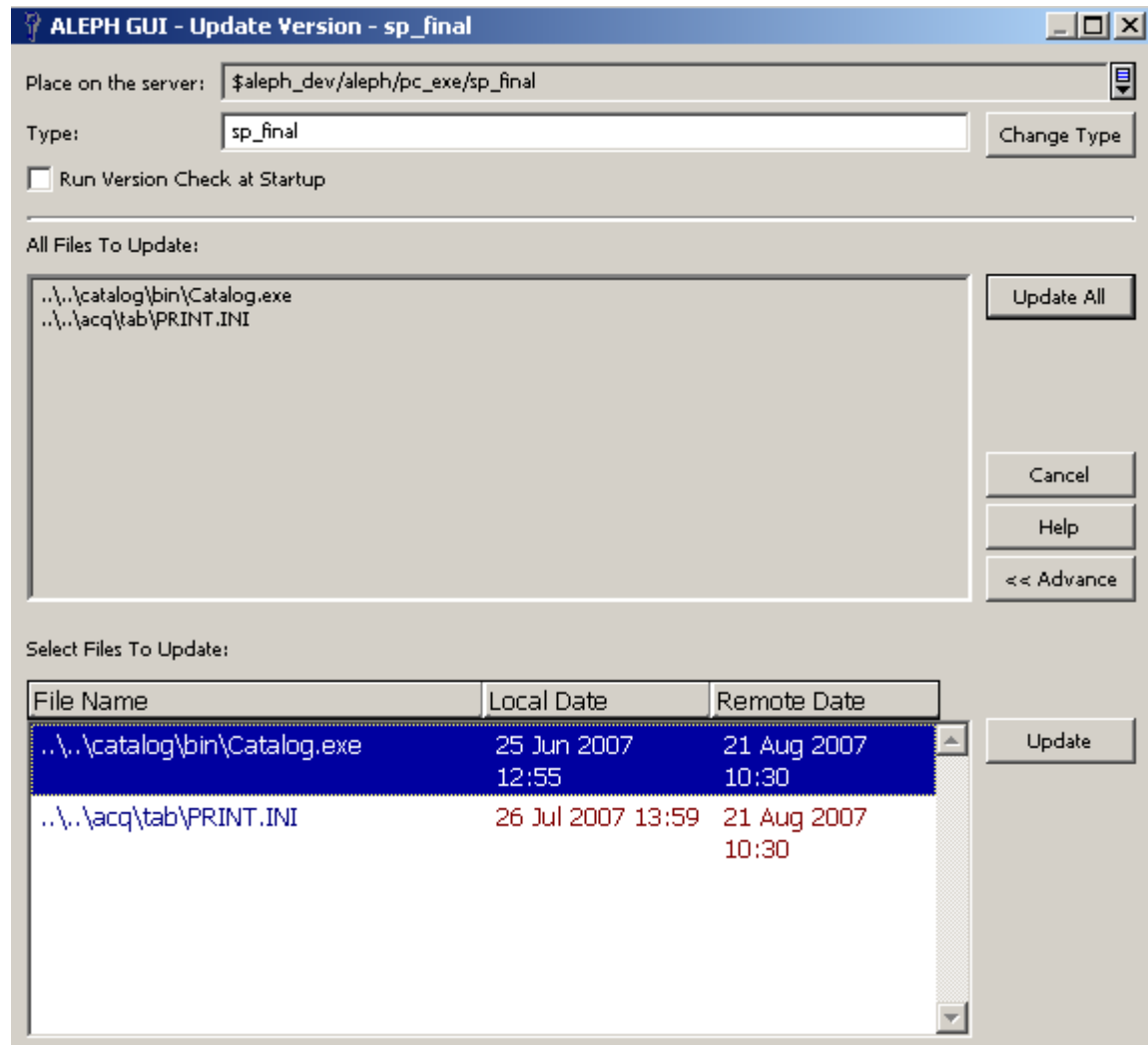
- All executable files.
- Only configuration which have been edited by or approved by the systems librarian.

If the systems librarian first edits the file and then decides which files to copy to `sp_final`, then only certain files, some possibly edited, arrive at the PC.

In addition, it is possible to accept or reject executable and configuration files when version check is run. For example, if `catalog.ini` and `acq/tab/print.ini` are updated in the service pack and the user does version check, then the following screen appears.



The two files which the service pack updated and the systems librarian copied to `sp_final` appear above. The default `Type` above is `sp_final` because this is what is defined in `alephcom.ini`. It may be changed on the fly by clicking the **Change Type** button. It is possible to choose to update only one of these files by clicking the **Advance** button. After clicking the **Advance** button the following screen appears:



From this dialog box, you can choose just one file and then click **Update**. In the above case, `Catalog.exe` is updated to the PC but `print.ini` is not. This is because the user has selected `Catalog.exe` and not `print.ini`.

Additional information on the version check is available in the *Aleph 23 Staff User's Guide - General*.