

A photograph of Wrigley Field stadium in Chicago. The stadium is a large, curved, multi-story building with a prominent red sign that reads "WRIGLEY FIELD HOME OF CHICAGO CUBS" and "MARLINS" below it. The stadium is surrounded by a city street with traffic lights and signs. The sky is clear and blue.

360 Link & E-journal Portal Roadmap Highlights

Eddie Neuwirth –
Director of Product Management, Discovery

Since Last ELUNA

EJP/AtoZ list 2.0

Enhancements:

- New and Improved user interface
- Responsive design/mobile friendly
- Autocomplete
- Search inside Summon feature – discovery integration
- Integrated Syndetic Solutions covers
- Ulrich's integration – journal history
- Open Access/Peer review flag
- Improved subject browsing

Roadmap Confidentiality

The information provided here gives a high level view of the planned roadmap for 360 Link and the E-journal Portal/AtoZ list and the new functionality that will be available. The information in this document is confidential and proprietary to Ex Libris.

The roadmap for 2017 is still in the planning stage. Each feature will need to be scoped for functionality, sized for level of effort, and scheduled for delivery. During this process it is possible for some features to move off the roadmap and others to be added.

Neither the document nor its contents can be forwarded to a third party without express written permission from Ex Libris.

The information in this document is for information and its contents are subject to change, without prior notice, at the sole discretion of Ex Libris.

Roadmap Areas and Highlights 2017

Infrastructure and Stability

Hardware (back-end) updates
Increased interface response time for EJP
Improved monitoring – ExL Hub

Improved velocity for Linker updates
HTTPS support and testing

User Experience Improvements – New Features, Enhancements, Bugs

OA-DOI integration
Scholar Profiles upgrade
Better IEDL matching (and increased volume of matching)

Accessibility improvements for Sidebar
Improved Translations
RefWorks Export Improvements
EJP OA/Peer Review flagging improvements

Analytics

New Report: “Items not found” report

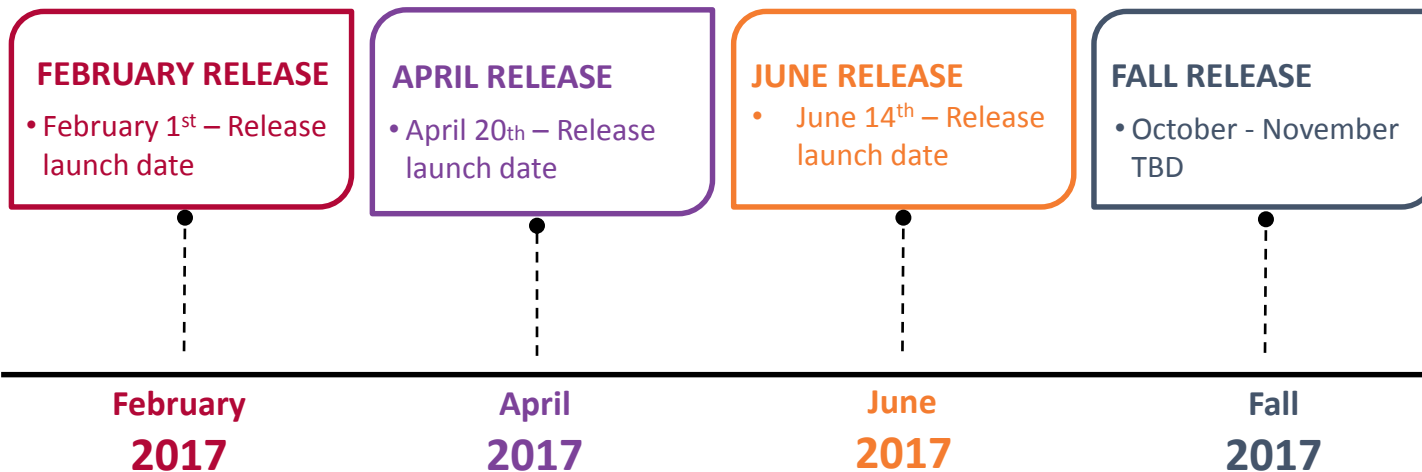
Leverage 360 Link data for bX recommender

Top Priorities for 2017

Priorities in order are:

1. Infrastructure improvements
2. Linker velocity and quality control
3. Ongoing bug fixes
4. Reporting and Analytics
5. New features and enhancements

360 Link and EJP 2017 Release Dates



360 Link and E-journal Portal 2017 Release Highlights-DRAFT

FEBRUARY RELEASE

- Bug fixes
- API improvements to ensure parity with native UI
- Session ID and article title logging for bX
- Java linkers for 2017 collections

February
2017

APRIL RELEASE

- Improved email for report a problem/ILL
- Updated translations
- Analytics infrastructure work (for sharing data with bX and new reports)
- Holdings integration with ProQuest A&I resources

April
2017

H2

- OA-DOI API integration
- Improved IEDL match frequency and accuracy
- OA/PR flagging improvement for EJP
- New customer-facing report for “no holdings found”
- Scholar Profiles widget update
- Accessibility improvements Sidebar
- RefWorks citation improvements
- Reprints Desk integration

June
2017

November
2017

Bug fixes and Linker releases ongoing throughout the year

2017 Linker Updates

- With the April 20 release we added new linkers for over 300 databases.
- We are current with updated linkers for all known new 2017 versions of provider databases.

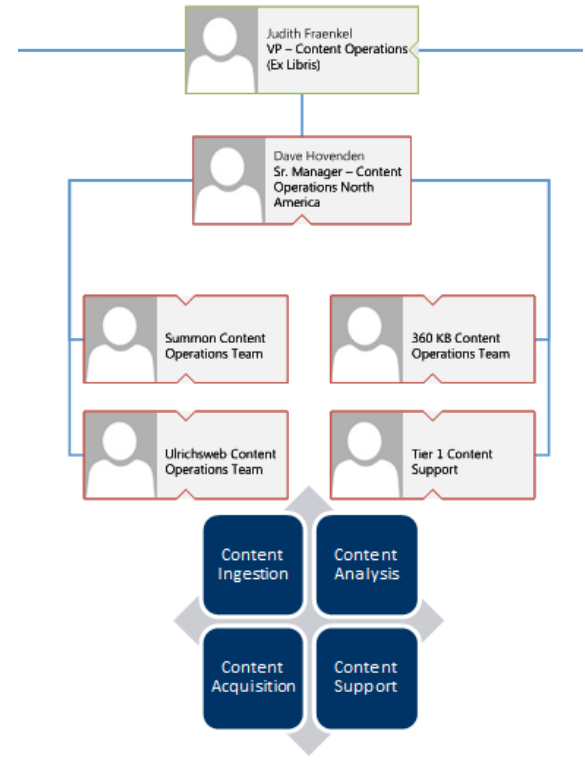
>1200 linker updates since December

Increased Frequency of Linker Updates


- Content Operations has now taken over Linker creation
- Linker creation has now been integrated as part of MDL workflow when adding new collections to the KB

Benefits:

- Increased frequency of deployment
- Faster turnaround time when new collections are added



OA DOI Integration

 **University Library**

You are looking for

People are not Robots: Recommendations for Boosting Workplace Efficiency

Author: Frog, Kermit
Journal: Journal of Super Intelligence
Date: 2001
Volume: 128 Issue: 1 Page: 99

Sorry, this item is not available online. Please use options below to get it:

Get Open Access version Use the Open Access Button service to find a free version on the open Web

Request this Item (usually takes 1-3 days)

[Search the Union Catalog](#) to see if another library nearby has this item
[Ask for Help](#) Librarians on duty

[Search CrossRef](#) for a DOI link to the full text

Still need help? ^

[Try Google Scholar](#)

Get Help from a Subject Specialist

[By Subject](#)
[By Course](#)




<https://oadoi.org/>

- 90 million articles
- open-access fulltext versions

by Impactstory.

Open Access Button

 **University Library**

You are looking for

People are not Robots: Recommendations for Boosting Workplace Efficiency

Author: Frog, Kermit
Journal: Journal of Super Intelligence
Date: 2001
Volume: 128 Issue: 1 Page: 99

Sorry, this item is not available online. Please use options below to get it:

[Get Open Access version](#) Use the oaDOI service to find a free version on the open Web

[Request this Item](#) (usually takes 1-3 days)

Search the Union Catalog to see if another library nearby has this item
[Ask for Help](#) Librarians on duty

[Search CrossRef](#) for a DOI link to the full text

Still need help? ▾

[Try Google Scholar](#)

Get Help from a Subject Specialist

[By Subject](#)
[By Course](#)



<https://openaccessbutton.org/>

Open Access Button

New Scholar Profiles

Jar

2 Possible matching author(s):

 **Smith, Mark A.**

Department of Pathology, Basic Sciences,
School of Medicine, Case Western Reserve
University

 **Smith, Mark A.**



Comparative Religion, Henry M. Jackson
School of International Studies, Division of
Social Sciences, College of Arts &
Sciences, University of Washington

powered by [Pivot Scholarly Profiles](#)

 *Perry, George* ; Ashford, J

; *Le*

assi

Sandra L ; Harris, Peggy L R ;
B  ; *Perry, George*  ; Smith,



Thank You

Questions?

eddie.Neuwirth@exlibrisgroup.com