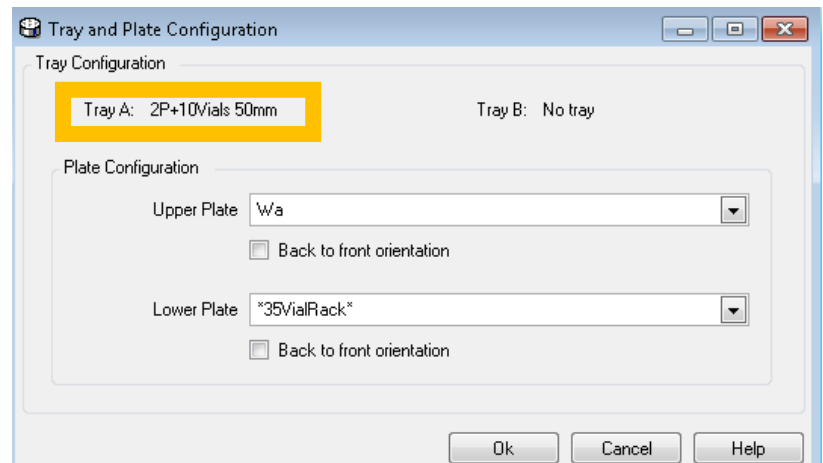
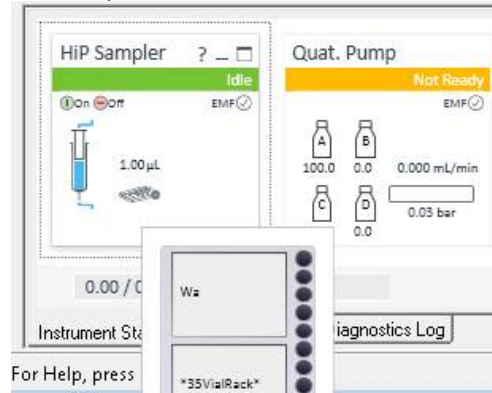
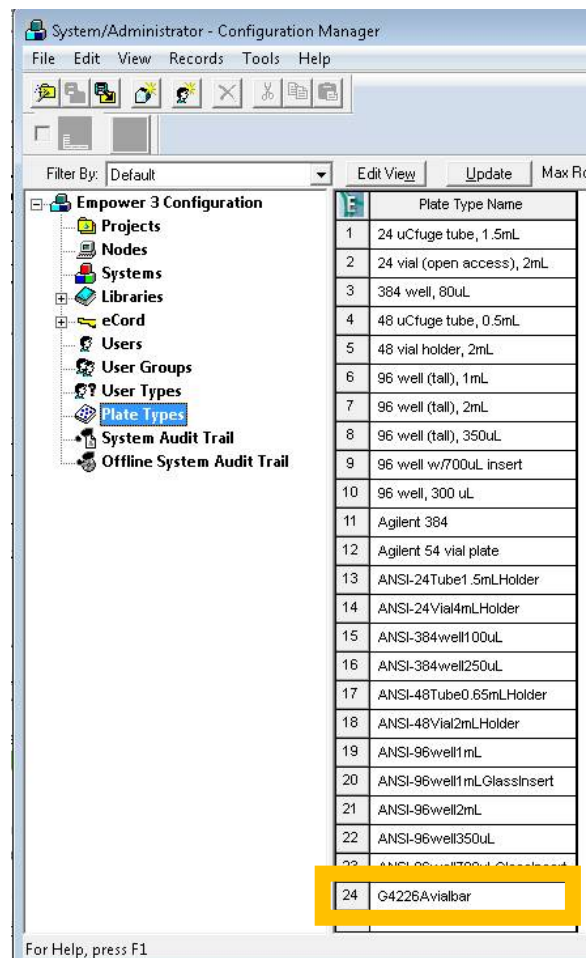


## Using G4226A with 2Plates/10 vial tray

The tray is automatically recognized by the sampler.



In Empower configurator import the 10 vial bar.txt.



Define Plates For Sample Set Method

2790 Layout            Plate Sequencing Mode

	Plate Type Name	
1	G4226Avialbar	0

Select Location of Standards - Untitled

First, select where standard injections should occur :

- No standards
- At start of sample set
- At start and end of sample set
- Throughout sample set (average all)
- Before each sample group
- Around each sample group (without overlap)
- Around each sample group (with overlap)

Start loading vials in tray position :

< Back    Next >    Cancel    Help



Run Only Continue on Fault

Apply Table Preferences Sample Set Method

Sample Set Method: Untitled

	Plate/Well	Inj Vol (uL)	# of Injs	Label	SampleName	Level	Sample Matrix	Function	Method Set / Report Method
1	0:2	1.0	1	U0101	Unk			Inject Samples	G4226Vials
2	0:3	1.0	1	U0102	Unk			Inject Samples	G4226Vials
3	1:4	1.0	1	U0103	Unk			Inject Samples	G4226Vials

Single **Samples** Sample Sets Running

Instrument Method:  
 G4226Vials  
 Edit Monitor Setup

Sample Set Time Remaining: 0:00:00:00  
 Total Samples Time Remaining: 0:00:00:00  
 New Sample Set Time: 0:00:03:41



**HiP Sampler**  
Idle  
EMF ✓

1.00 µL

**Quat. Pump**  
Idle  
EMF ✓

A: 100.0 B: 0.0  
C: 0.0 D: 0.0  
0.000 mL/min  
0.15 bar

**Column Comp.**  
Idle  
EMF ✓

28.35 °C 28.50 °C

**DAD**  
Idle  
EMF ✓



Run Only Continue on Fault

Apply Table Preferences Sample Set Method

Active sample set : G4226\_Run4

	Plate/Well	Inj Vol (uL)	# of Injs	Label	SampleName	Level	Sample Matrix	Function	Method Set / Report Method	Label Reference
1	0:2	1.0	1	U0101	Unk			Inject Samples	G4226Vials	
2	0:3	1.0	1	U0102	Unk			Inject Samples	G4226Vials	
3	0:4	1.0	1	U0103	Unk			Inject Samples	G4226Vials	

Single Samples Sample Sets **Running**

Instrument Method:  
 G4226Vials  
 Edit Monitor Setup

Sample Set Time Remaining: 0:00:03:41  
 Total Samples Time Remaining: 0:00:03:41  
 New Sample Set Time: 0:00:00:00



**HiP Sampler** Run

EMF

1.00 µL

Vial 2

**Quat. Pump** Run

EMF

A: 100.0 B: 0.0

C: 0.0 D: 0.0

0.000 mL/min

0.11 bar

**Column Comp.** Run

EMF

28.27 °C 28.45 °C

**DAD** Run

EMF

Run 0.00 / 1.00 min **Instrument Run**   On  Off

Instrument Status Module Options Diagnostics Log