

Configuring Permissions for Kofax Front Office Server (KFS) 3.0 WebScan

Application Note

Date	December 02, 2010
Applies To	Kofax Front Office Server 3.0
Summary	This application note provides instructions for configuring the permissions necessary to allow Kofax Front Office Server (KFS) 3.0 WebScan to communicate with a local scanner or Document Scan Server (DSS) device.
Revision	1.0

KFS 3.0 WebScan Overview

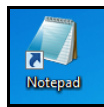
The WebScan feature in Kofax Front Office Server (KFS) 3.0 is a Web-based service that allows the user to scan from a local scanner or Document Scan Server (DSS). Special permissions must be granted to WebScan for Windows to allow the Web Service to have access to the local scanner.

Local scanner settings must be set up prior to using WebScan. WebScan uses a TWAIN scan source. The TWAIN source can either be the Kofax TWAIN Data Source (VRS 4.2 or 4.5), or the scanner's TWAIN driver (which will not use VRS). Any scanner settings or permission changes made to the local computer will take effect at the next login to the Web Client.

Setting Up the Code Access Security Policy for WebScan

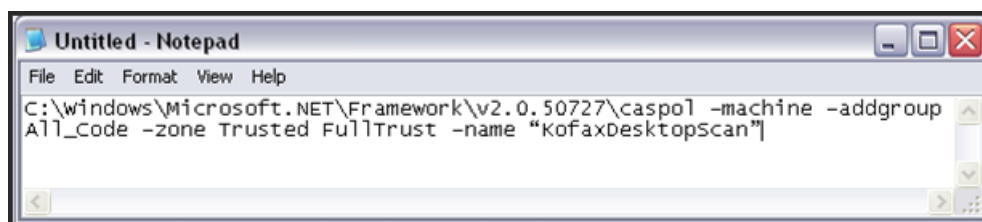
This section describes how to set up the Code Access Security Policy that allows WebScan to communicate with the scanner.

1. On the client workstation, open Notepad.



2. Copy and paste the following command into Notepad.

```
C:\Windows\Microsoft.NET\Framework\v2.0.50727\caspol -machine -addgroup  
All_Code -zone Trusted FullTrust -name "KofaxDesktopScan"
```

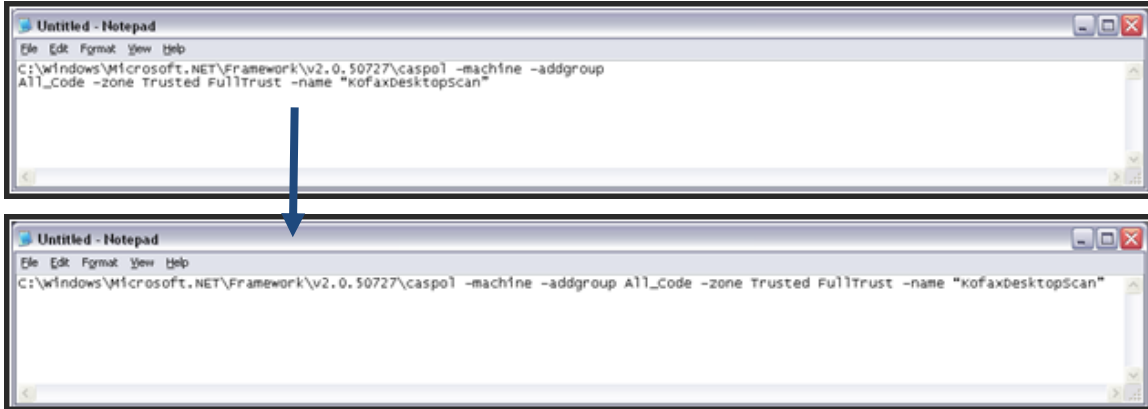


NOTE: This command is also located in the [Kofax Front Office Server 3.0 Administrator's Guide](#) on page 26.

Configuring Permissions for KFS 3.0 WebScan

Application Note

3. Delete the line break after “-addgroup” and insert a space.



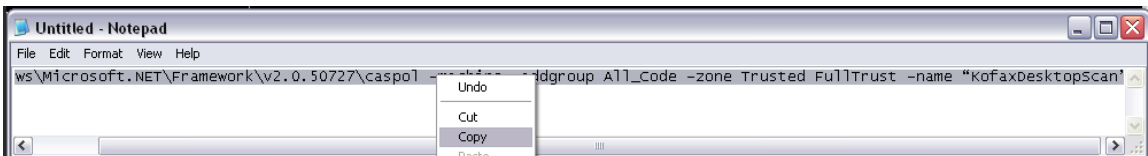
NOTES:

By default, .NET Framework 2.0 is installed in the following folder.

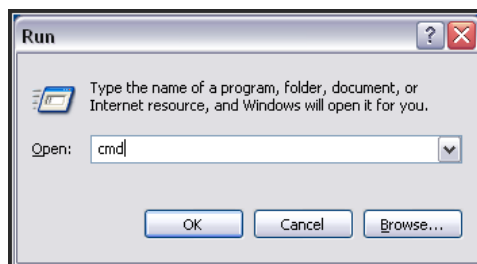
C:\Windows\Microsoft.Net

If .NET Framework 2.0 was installed to a custom location, it is necessary to edit the path to the actual location of .NET Framework 2.0.

4. Copy the newly edited command.



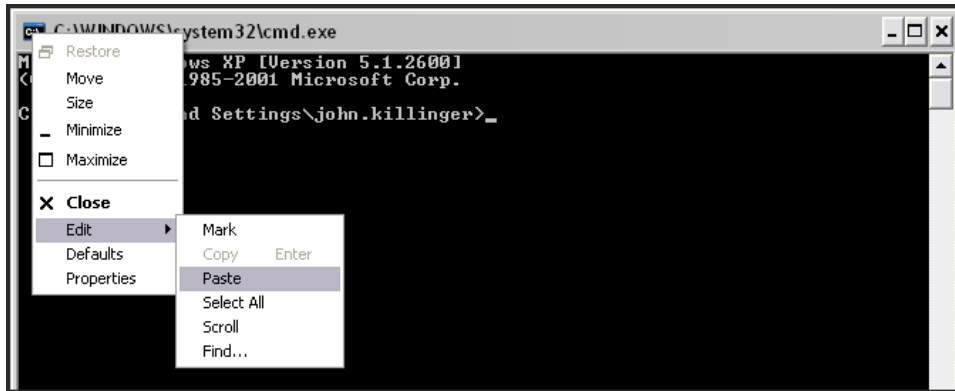
5. Open a Command Prompt window.



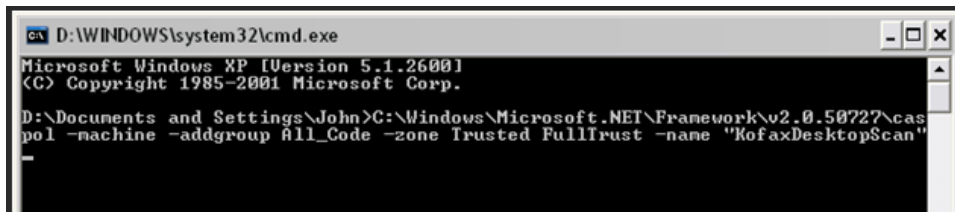
Configuring Permissions for KFS 3.0 WebScan

Application Note

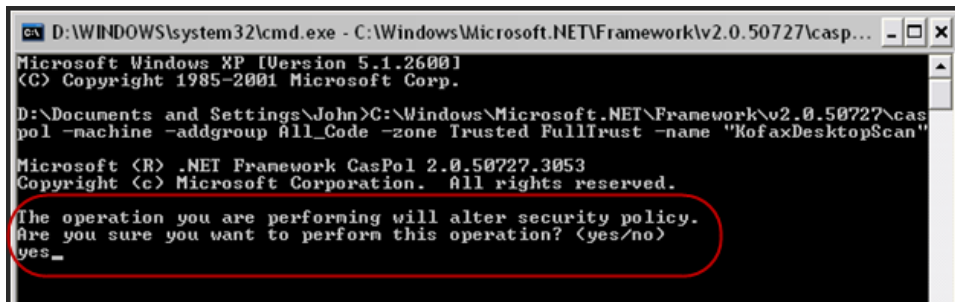
- Click the command prompt icon in the title bar and select Edit | Paste from the drop-down menu.



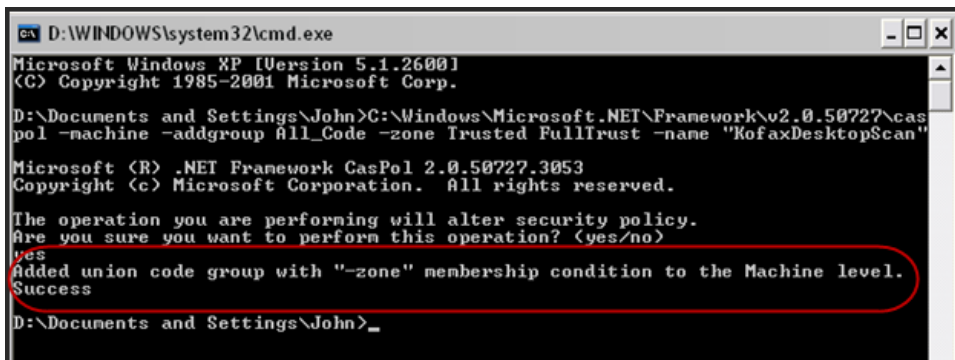
- Press the Enter key to run the command.



- When prompted, confirm the performance of the operation by typing "yes".



- The operation will confirm Success.



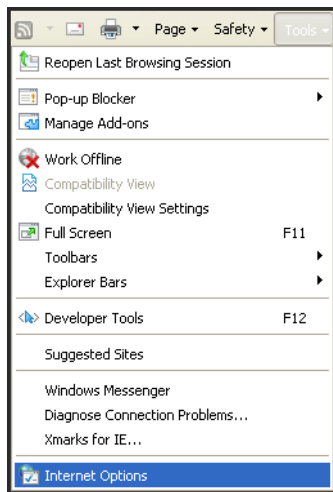
Adding the KFS Server to Trusted Sites in Internet Explorer

Adding the KFS Server to the Trusted Sites list in Internet Explorer will allow WebScan to communicate across the browser’s internal security “Zone” boundaries.

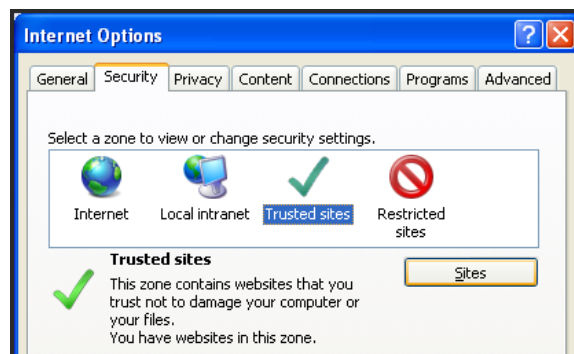
1. Open Internet Explorer.



2. From the Tools Menu, select Internet Options.



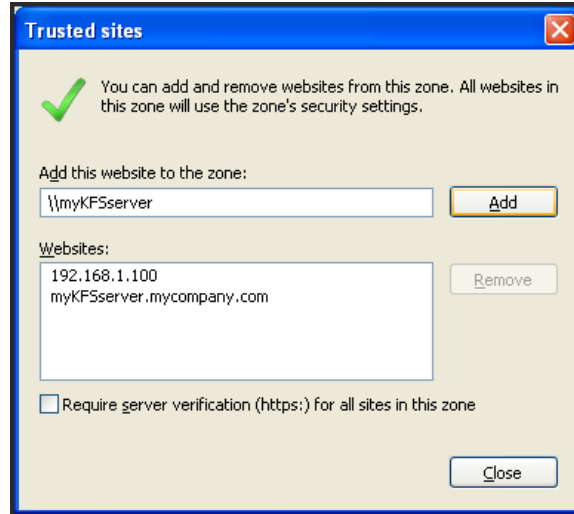
3. Select the Security Tab followed by Trusted Sites and click Sites.



Configuring Permissions for KFS 3.0 WebScan

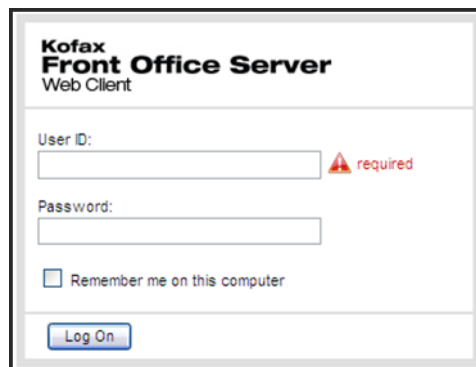
Application Note

4. Type the Fully Qualified Domain Name, IP Address, or Computer Name of the KFS Server and click Add.

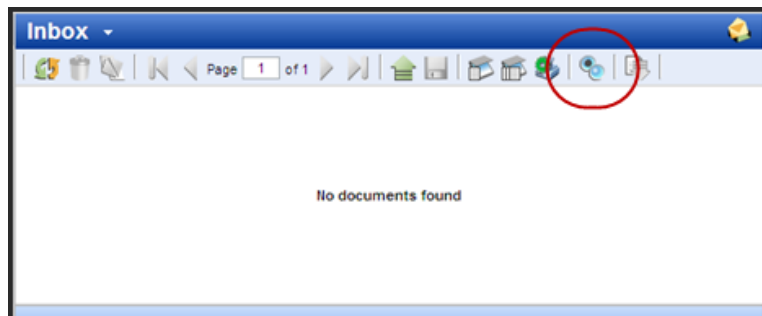


Testing WebScan Permissions

1. Log into the KFS Web Client.



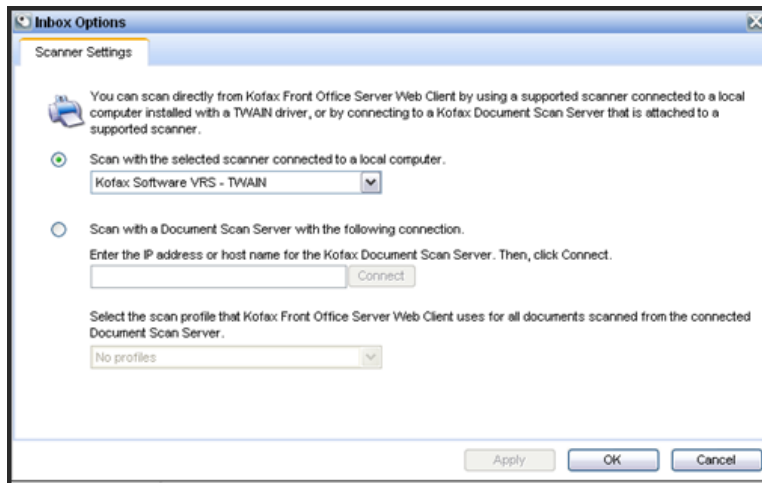
2. Click the Inbox Options button.



Configuring Permissions for KFS 3.0 WebScan

Application Note

3. Select a scan source and click OK.



4. Use either the Scan a Single Page or Scan All Pages button to perform a test scan.

