

Installing OXPd 1.4.8.0 on HP MFPs for Use with KFS 3.x

Application Note

Date	March 30, 2011
Applies To	Kofax Front Office Server 3.0, 3.5
Summary	This application note provides detailed instructions for installing the OXPd 1.4.8.0 on an HP Multi-Function Printer, as well as properties file configurations that will enable the MFP to be added as a device in KFS 3.0 and 3.5.
Revision	1.0

Installing OXPd 1.4.8.0 on HP MFPs for Use with KFS 3.x Overview

To deploy the Kofax Front Office Server (KFS) Front Panel software on a Hewlett-Packard (HP) Multifunction Peripheral (MFP), KFS must first be installed on the server, and the Open eXtensibility Platform for Devices (XPd) must be installed on the HP MFP. Certain KFS properties files must also be configured correctly. This application note serves as a companion document to the [Kofax Front Office Server 3.0 Administrator's Guide for HP MFPs](#) and the [Kofax Front Office Server 3.5 Administrator's Guide for HP MFPs](#).

Installing OXPd 1.4.8.0

The installation of OXPd 1.4.8.0 is a two-step process. In the first step, the OXPd Solution Installer must be installed using the MFP's Package Loader Web page. In the second step, the Chai Digital Send Enablers and OXPd Workflow must be installed using HP's Web Jetadmin utility.

Verifying MFP Requirements for OXPd 1.4.8.0

Before installing OXPd, make sure that the MFP meets the minimum firmware, memory, and other requirements. KFS includes release notes provided by HP that indicates the supported firmware versions. Follow the steps outlined below to locate these release notes.

1. In Windows Explorer, navigate to the following folder:
C:\Program Files\Kofax\Front Office Server\Resources\extensions\mpf\hp
2. Open hp-ext-XX-oxpdsolutioninstaller-ReleaseNotes-1.0.1.0.txt. These release notes apply to all MFP Group numbers.
3. Confirm that the MFP meets the requirements specified in the release notes. For assistance upgrading the MFP, please contact HP technical support.

Installing the OXPd Solution Installer using the Package Loader

1. Open the HP Package Loader Web page by entering the following address in a Web browser, replacing <mpf> with the IP address or host name of the HP MFP:
http://<mpf>/hp/device/this.loader
2. When prompted, enter the administrator login information for the MFP. If no administrator login has been previously configured, click the link to create one. For more information about creating an administrator login, please consult the HP MFP documentation.

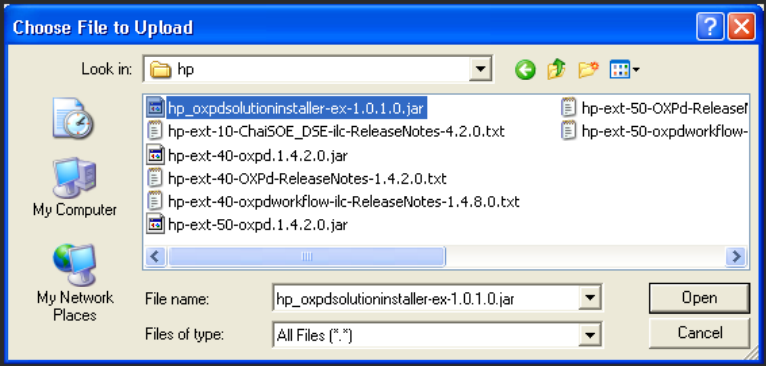
Installing OXPd 1.4.8.0 on HP MFPs for Use with KFS 3.x

Application Note

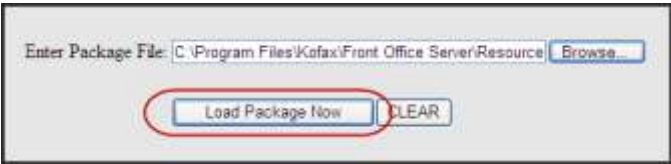
- 3. Once successfully logged into the Package Loader screen, click the Browse button next to the Enter Package File field.



- 4. In the Choose File to Upload screen, navigate to the following folder:
C:\Program Files\Kofax\Front Office Server\Resources\extensions\mfp\hp
- 5. Double-click the following file: *hp_oxpdsolutioninstaller-ex-1.0.1.0.jar*



- 6. Confirm that the information in the Enter Package File field is correct and click Load Package Now.



- 7. The Package Loader screen will report a successful upload. Wait 3-5 minutes for the MFP to process the uploaded package before clicking the Loader Home link.

- Once the MFP has successfully completed processing the uploaded package, the Reloadable Packages table should list the Chai SSL Service and the OXPd:SolutionInstaller.

Reloadable Packages		
Package Name	Package URN	Select
Chai SSL Service	urn:hp:ChaiSSLConfig	<input type="checkbox"/>
OXPd:SolutionInstaller	urn:hp:laserjet:ext:OXPd:SolutionInstaller	<input type="checkbox"/>

Installing the Chai Digital Send Enablers and OXPd Workflow using Web Jetadmin

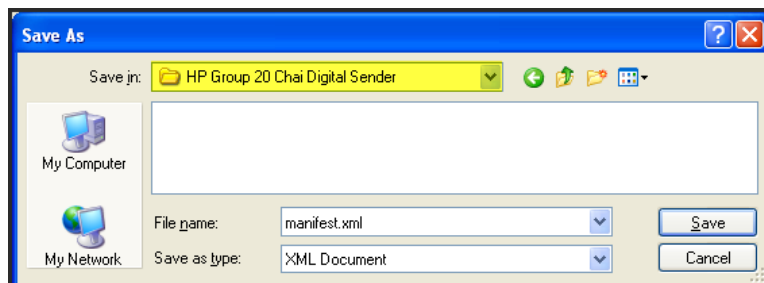
This section requires that the HP Web Jetadmin utility be installed. Please contact an HP representative for more information regarding the availability, installation, and use of the Web Jetadmin utility.

- Open the KFS SolutionInstallerFiles Web page by entering the following address in a Web browser, replacing <kfs> with the IP address or host name of the KFS server:

http://<kfs>/SolutionInstallerFiles



- Click the *hp-ext-<xx>-ChaiSOE_DSE-ilc-4.2.0* folder where <xx> matches the Group Number of the HP MFP.
- Download the manifest.xml file and save it to an easily identifiable subfolder on the local machine. This file will be used to install the Chai Digital Send Enablers on the MFP. In the example below the folder created is called *HP Group 20 Chai Digital Sender*.

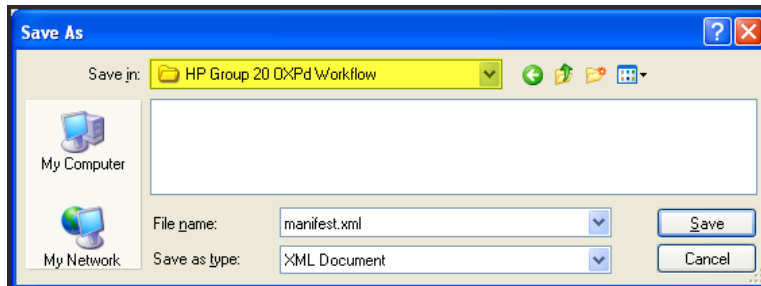


- Go back to the SolutionInstallerFiles main page and click the *hp-ext-<xx>-oxpdworkflow-ilc-1.4.8.0* folder where <xx> matches the Group Number of the MFP.

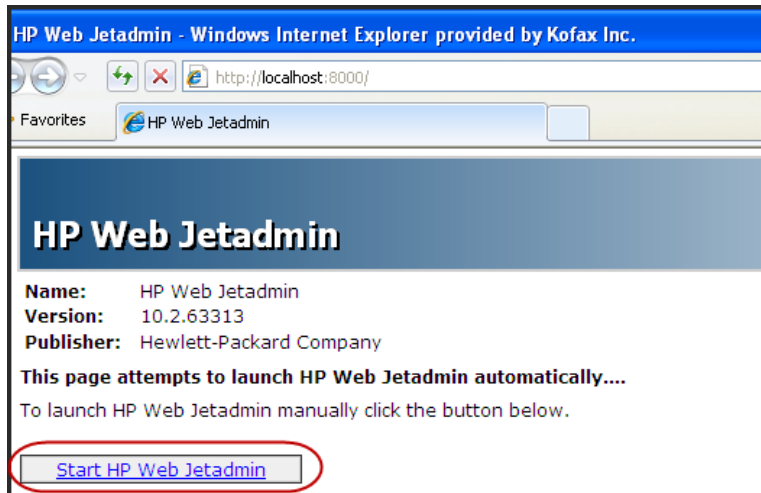
Installing OXPd 1.4.8.0 on HP MFPs for Use with KFS 3.x

Application Note

- Download the manifest.xml file and save it to a DIFFERENT easily-identifiable subfolder on the local machine. This file will be used to install the OXPd Workflow 1.4.8.0 on the MFP. In the example below the folder created is called *HP Group 20 OXPd Workflow*.



- From the Start Menu, select Programs | HP Web Jetadmin <xx> -and click the HP Web Jetadmin icon. If the resulting Web page does not automatically open the utility, click the “Start Web Jetadmin” link.



- Select the desired MFP from the All Devices list.

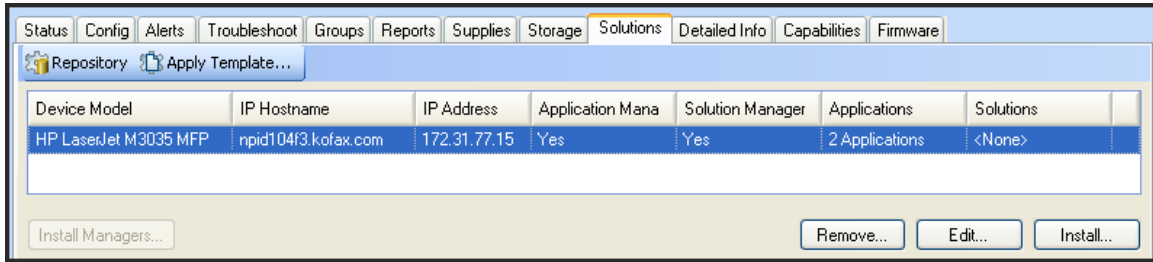


Installing OXPd 1.4.8.0 on HP MFPs for Use with KFS 3.x

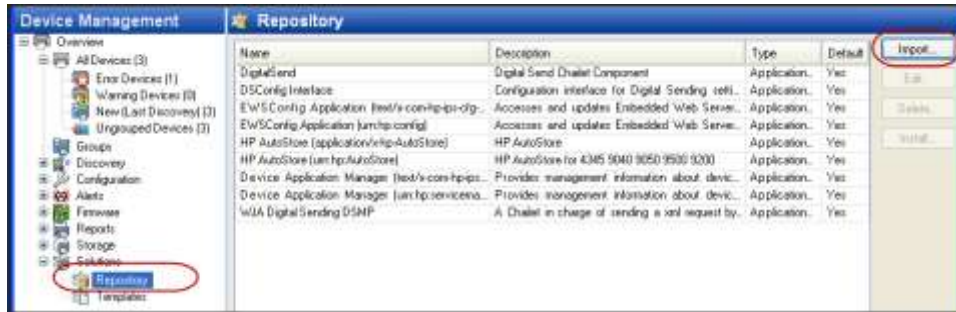
Application Note

- Select the Solutions tab.

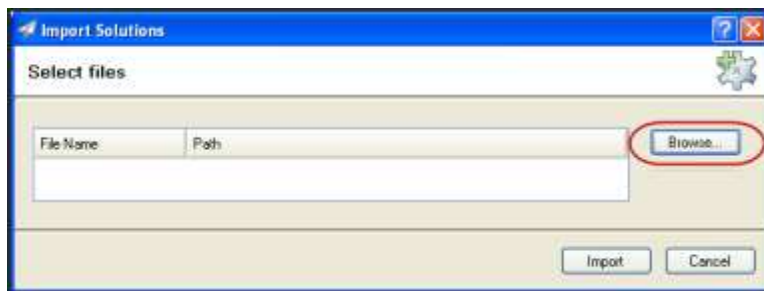
NOTE: If the installation of the OXPd Solutions Installer was successful, this screen will list the Application Manager, Solution Manager, and 2 Applications present on the MFP. At this point, the Solutions field will display <none>.



- In the Device Management tree, select Solutions | Repository. In the Solutions Repository screen, click Import.



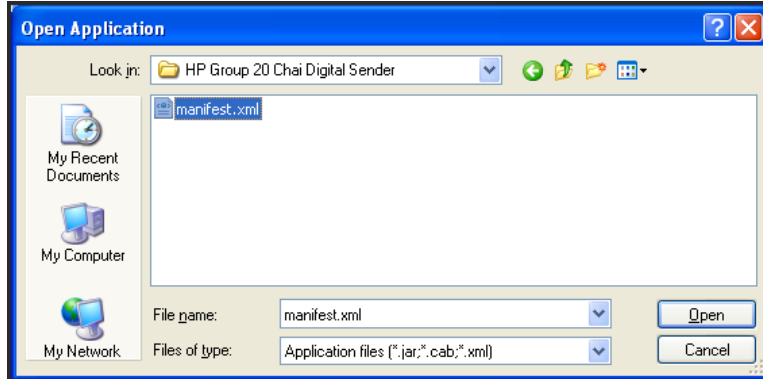
- From the Import Solutions dialog box click Browse.



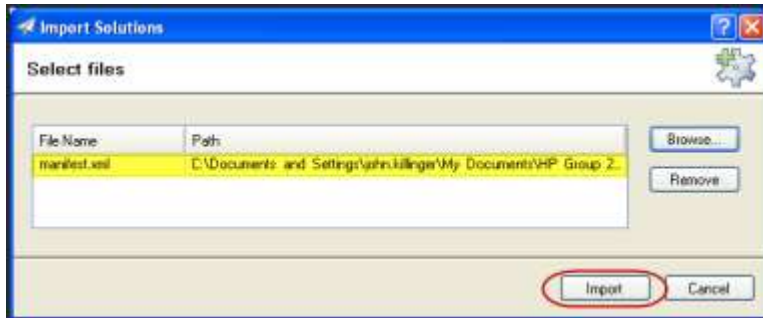
Installing OXPd 1.4.8.0 on HP MFPs for Use with KFS 3.x

Application Note

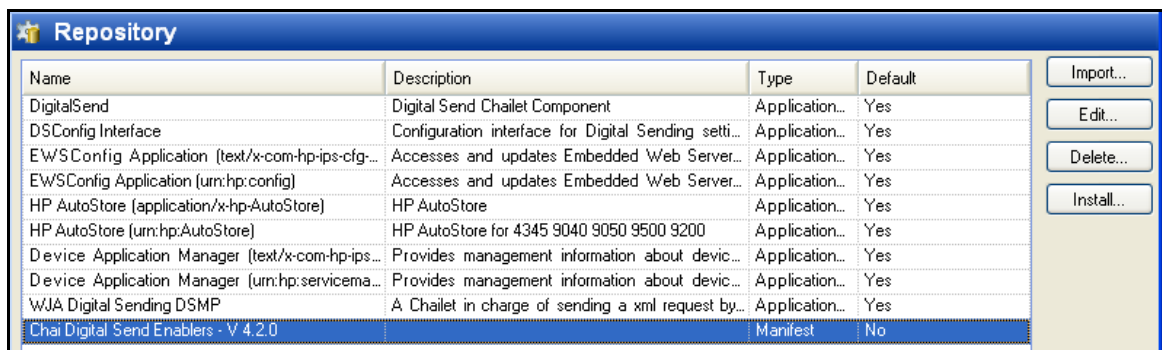
- Browse to the created folder where the manifest.xml file was saved. Select the manifest.xml file for the Chai Digital Send Enablers and click Open.



- Select the manifest.xml file and click Import.

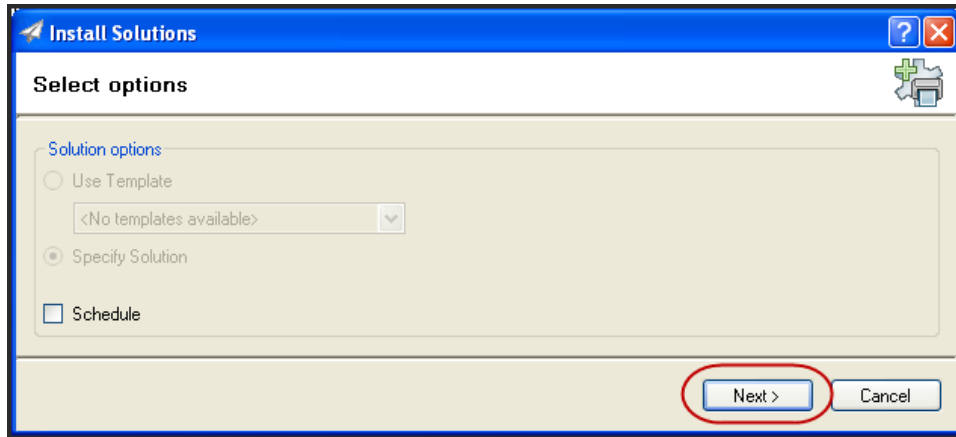


- The Solutions Repository will now contain a listing for the Chai Digital Send Enablers. Select this listing and click Install.

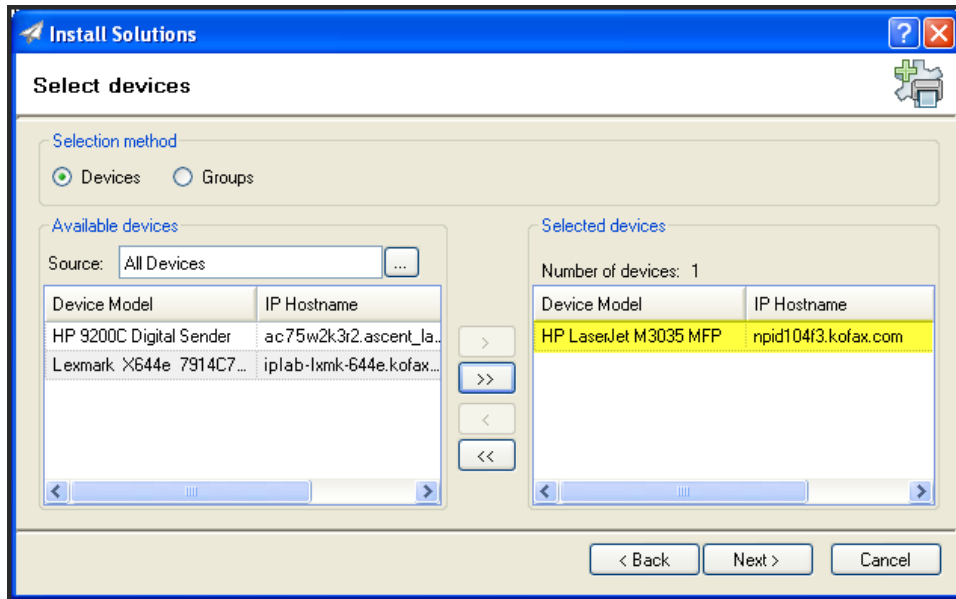


Installing OXPd 1.4.8.0 on HP MFPs for Use with KFS 3.x

14. From the Install Solutions dialog box click Next.



15. Double-click on the MFP listing to send it to the Selected Devices list. Click Next.

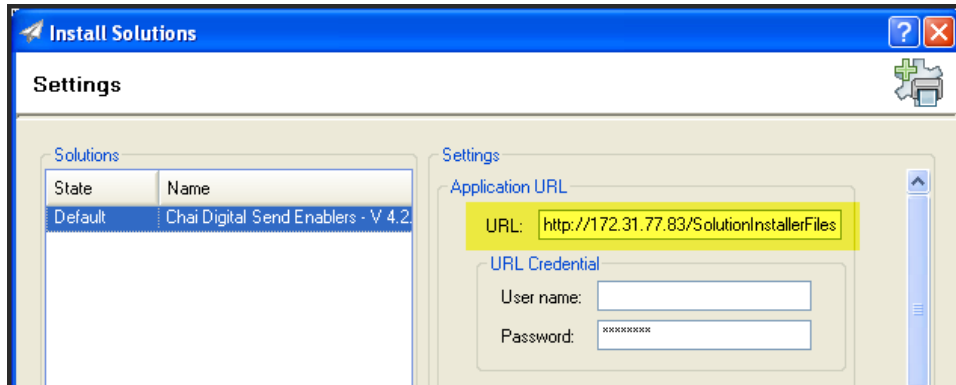


Installing OXPd 1.4.8.0 on HP MFPs for Use with KFS 3.x

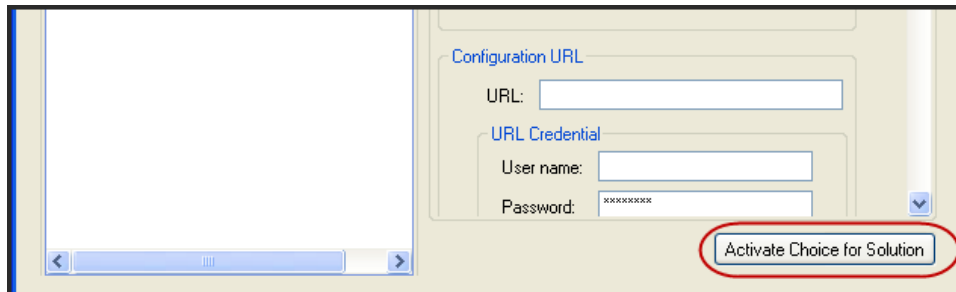
Application Note

- In the Settings screen, enter the following Application URL, replacing <KFS> with the IP address or host name of the KFS server, and replacing <xx> with the appropriate Group Number of the MFP.

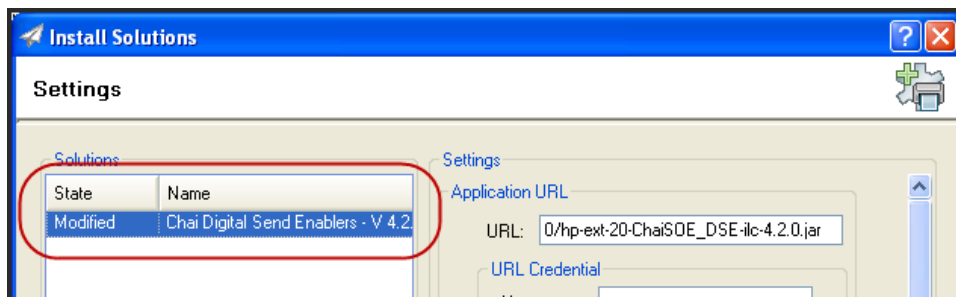
http://<KFS>/SolutionInstallerFiles/hp-ext-<xx>-ChaiSOE_DSE-ilc-4.2.0/hp-ext-<xx>-ChaiSOE_DSE-ilc-4.2.0.jar



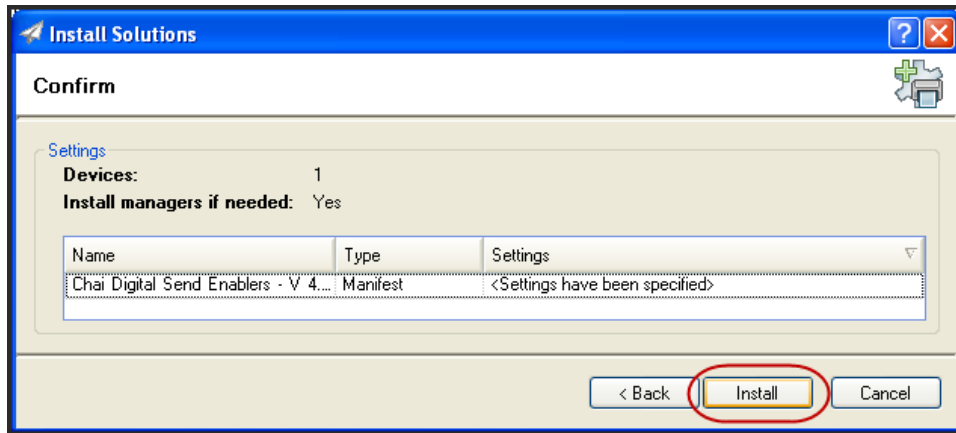
- If the network or KFS server requires authentication, enter the username and password into the Application URL Credential fields. Click Activate Choice for Solution.



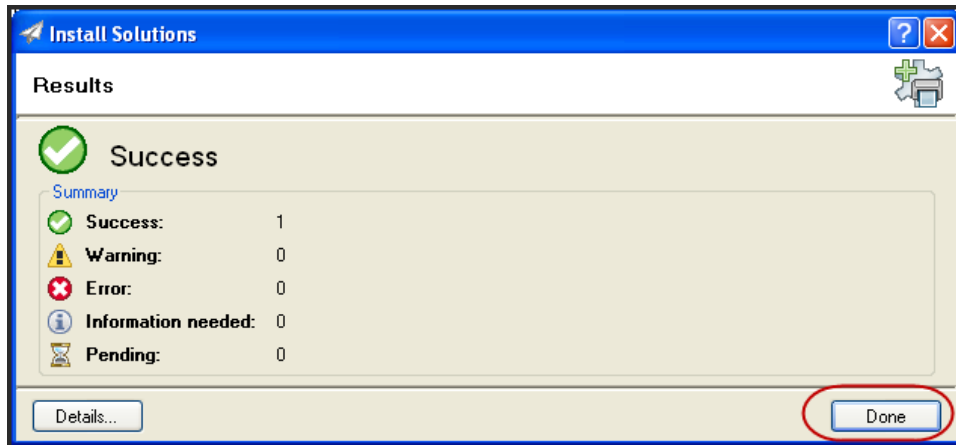
- Note that the State changes to Modified. Click Next.



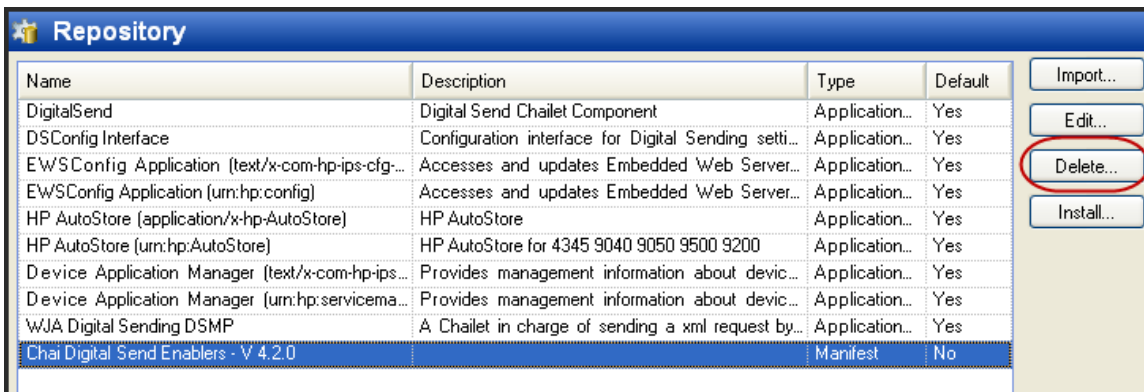
19. Confirm that the information displayed is correct and click Install.



20. When the Solution has been successfully installed, click Done.



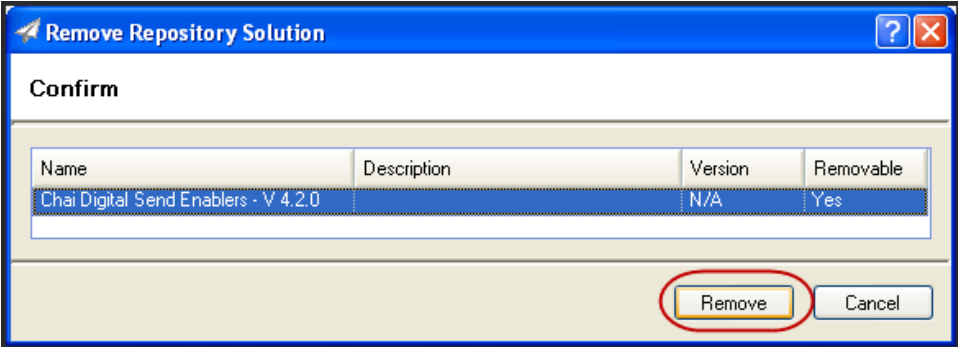
21. Only one manifest.xml can be loaded in the Repository at a time. Therefore, select the Chai Digital Send Enablers and click Delete.



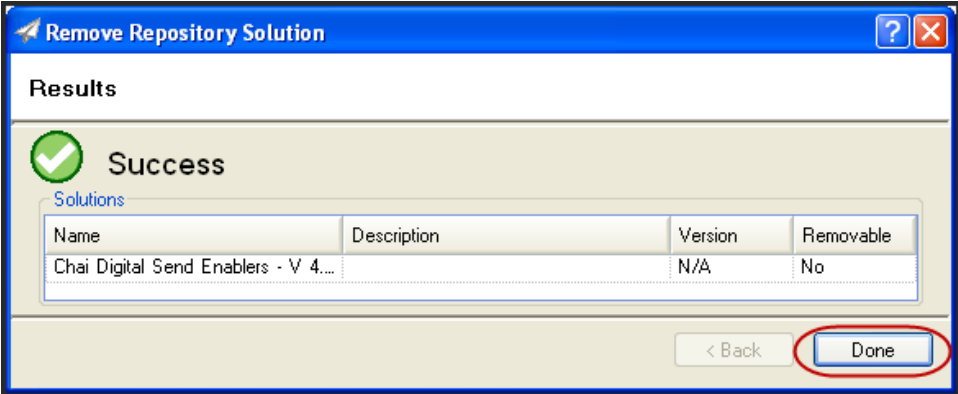
Installing OXPd 1.4.8.0 on HP MFPs for Use with KFS 3.x

Application Note

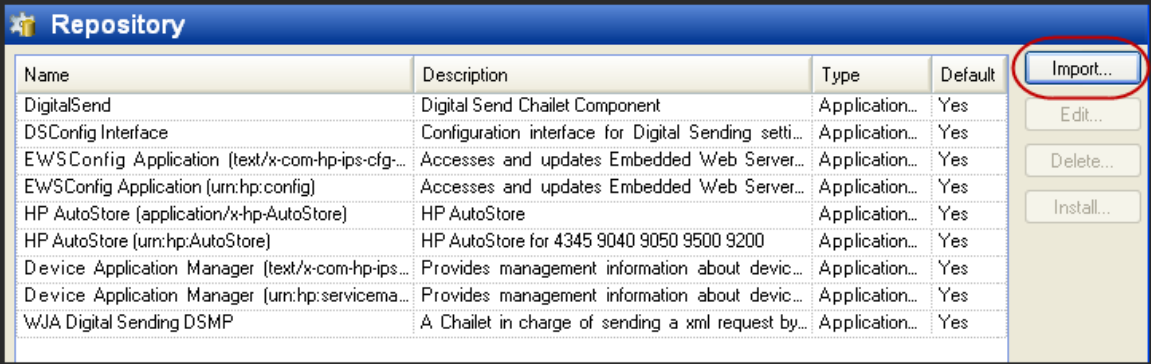
22. Confirm the removal by selecting Chai Digital Send Enablers and clicking Remove.



23. Once the Chai Digital Send Enablers file has been successfully removed from the Repository, click Done.

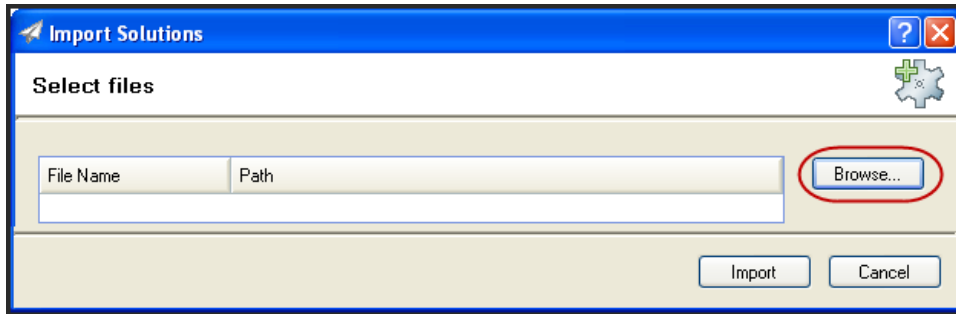


24. The same process will be used to Import and Install the OXPd Workflow 1.4.8.0. Click Import.

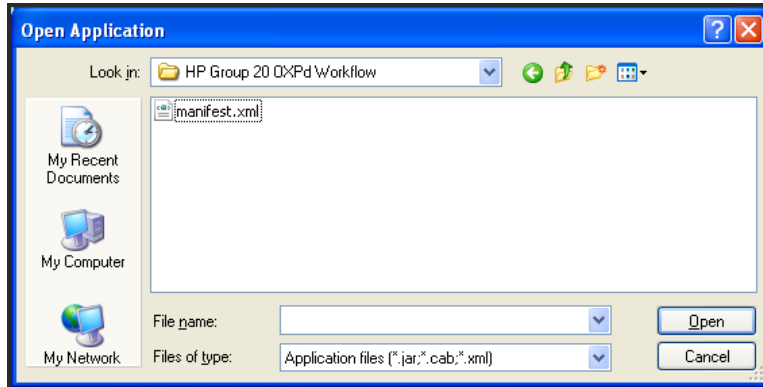


Installing OXPd 1.4.8.0 on HP MFPs for Use with KFS 3.x

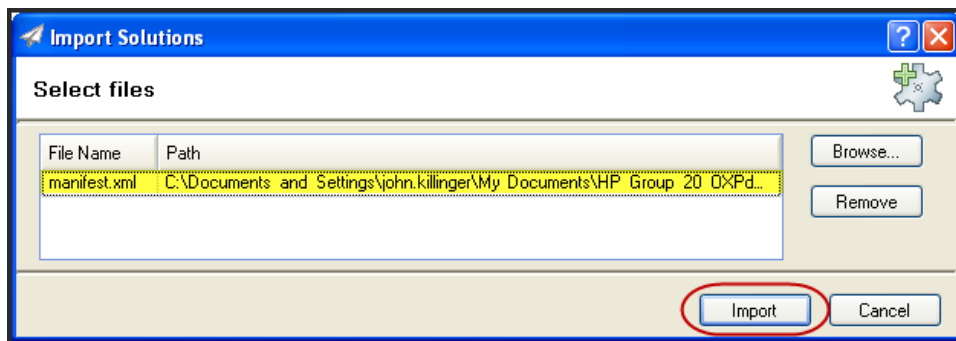
25. From the Import Solutions dialog box, click Browse.



26. Browse to the created folder where the manifest.xml file was saved. Select the manifest.xml file for the OXPd Workflow 1.4.8.0 and click Open.



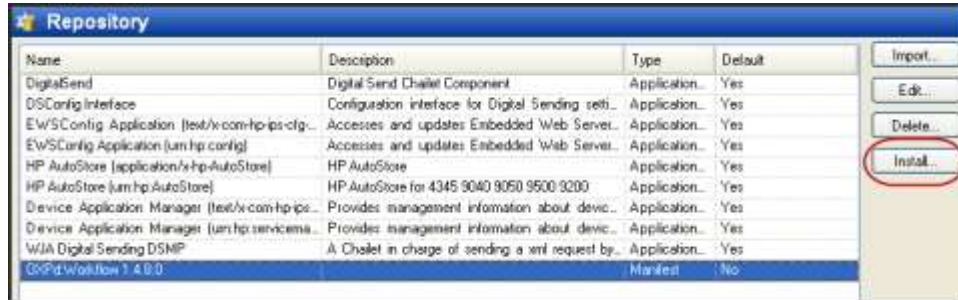
27. Select the manifest.xml file and click Import.



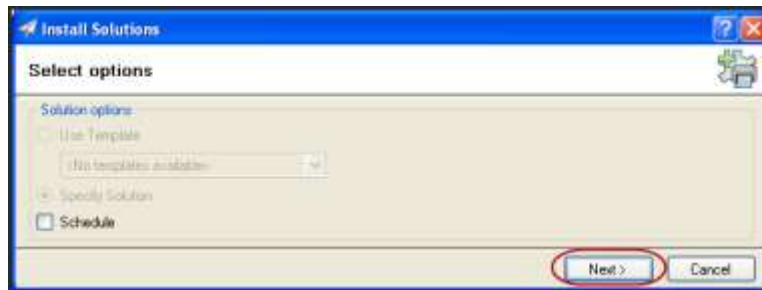
Installing OXPd 1.4.8.0 on HP MFPs for Use with KFS 3.x

Application Note

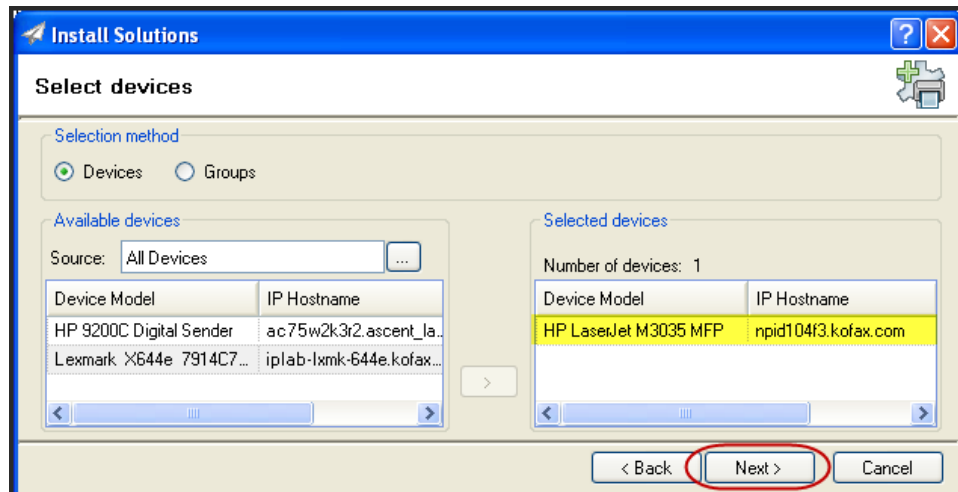
28. The Repository will now include a listing for the OXPd Workflow 1.4.8.0. Select this listing and click Install.



29. From the Install Solutions dialog box click Next.



30. Double-click on the MFP listing to send it to the Selected Devices list. Click Next.

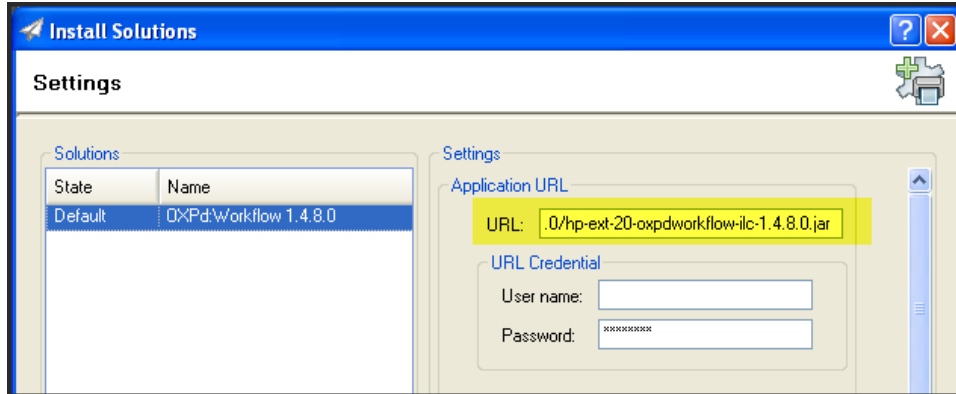


Installing OXPd 1.4.8.0 on HP MFPs for Use with KFS 3.x

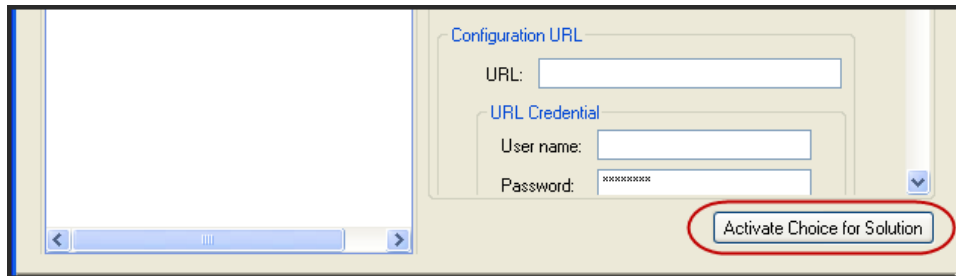
Application Note

- In the Settings screen, enter the following Application URL, replacing <KFS> with the IP address or host name of the KFS server, and replacing <xx> with the appropriate Group Number of the MFP.

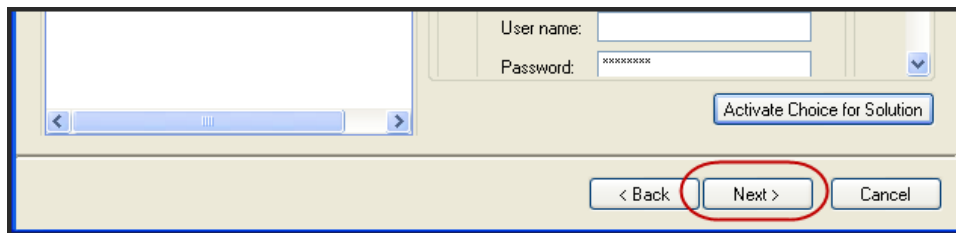
http://<KFS>/SolutionInstallerFiles/hp-ext-<xx>-oxpdworkflow-ilc-1.4.8.0/hp-ext-<xx>-oxpdworkflow-ilc-1.4.8.0.jar



- If the network or KFS server requires authentication, enter the username and password into the Application URL Credential fields. Click Activate Choice for Solution.



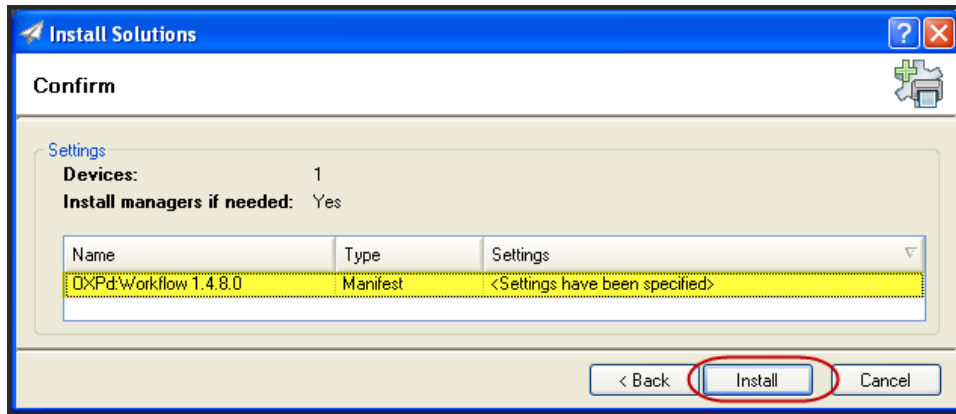
- Note that the State changes to Modified. Click Next.



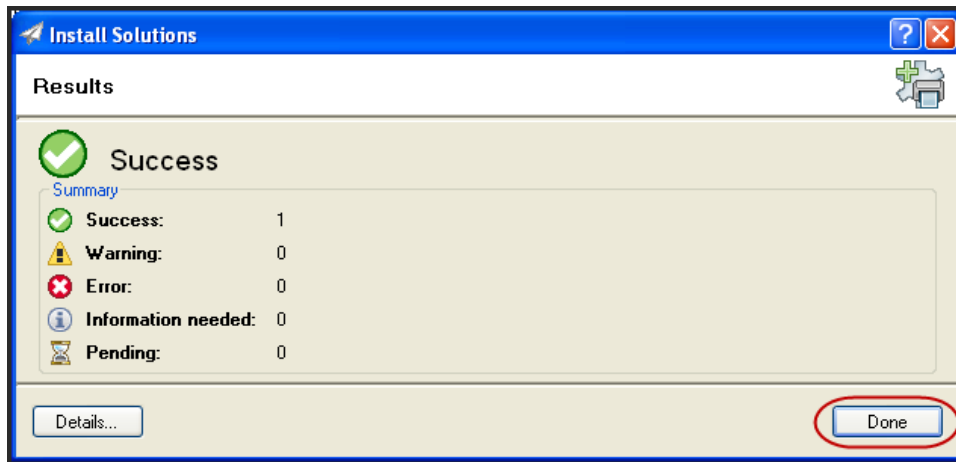
Installing OXPd 1.4.8.0 on HP MFPs for Use with KFS 3.x

Application Note

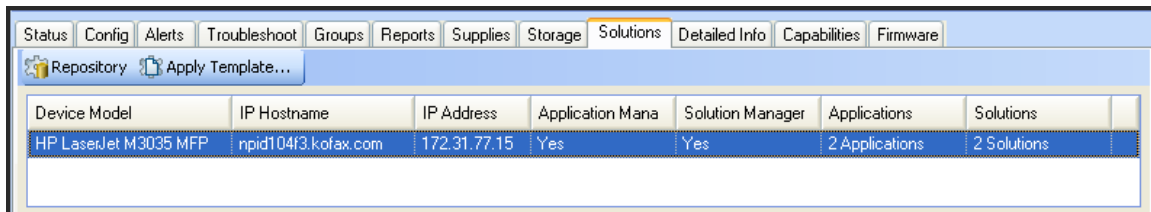
34. Confirm that the information displayed is correct and click Install.



35. When the Solution has been successfully installed, click Done.



36. Confirm that everything is installed correctly by going back to the Device Listing | Solutions Tab. Two Solutions are now installed.



Configuring Properties Files

KFS 3.x contains two properties files that should be edited to ensure proper communications between the KFS server and the HP MFP; the `kfs.properties` and `mfp.hp.properties` files. These files are both located in one of the following folders:

KFS 3.0

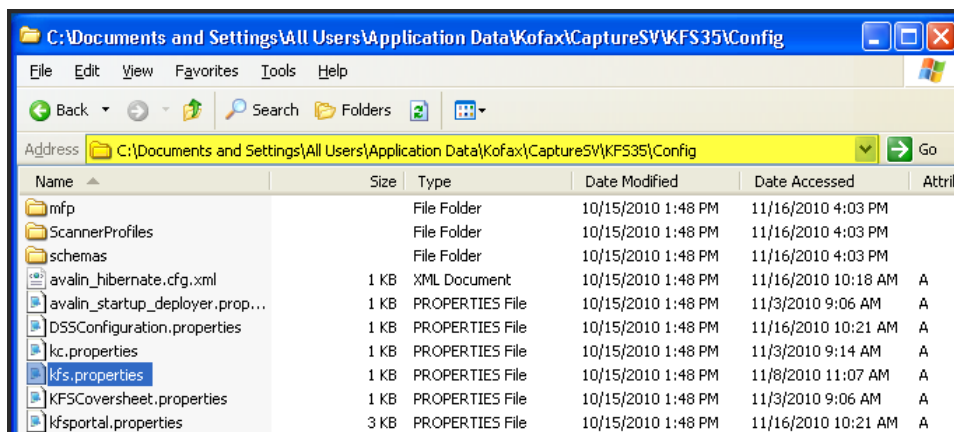
<Capture Share>\KFS\Config\

KFS 3.5

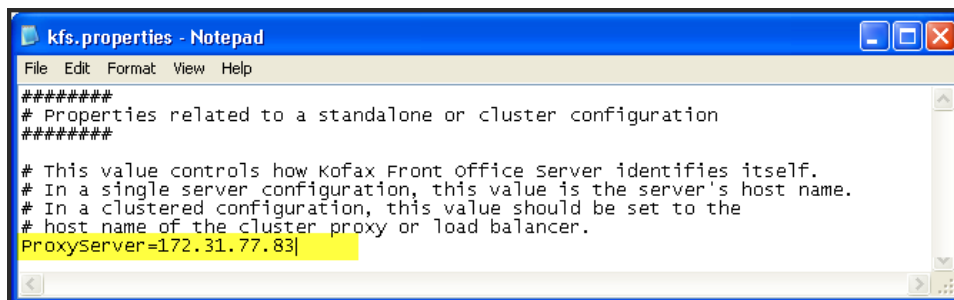
<Capture Share>\KFS35\Config\

Configuring the `kfs.properties` File

1. Stop the KFS service.
2. Open the `kfs.properties` file in a text editor, such as Notepad.

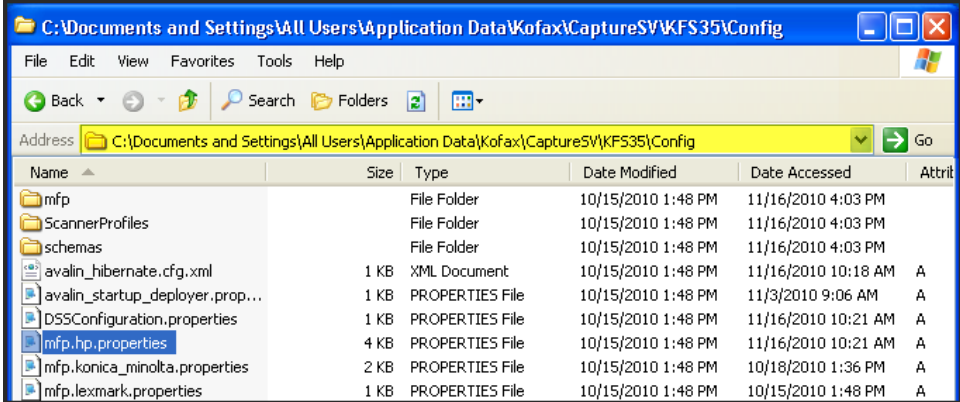


3. Change the ProxyServer value from the host name of the KFS server to its IP address.

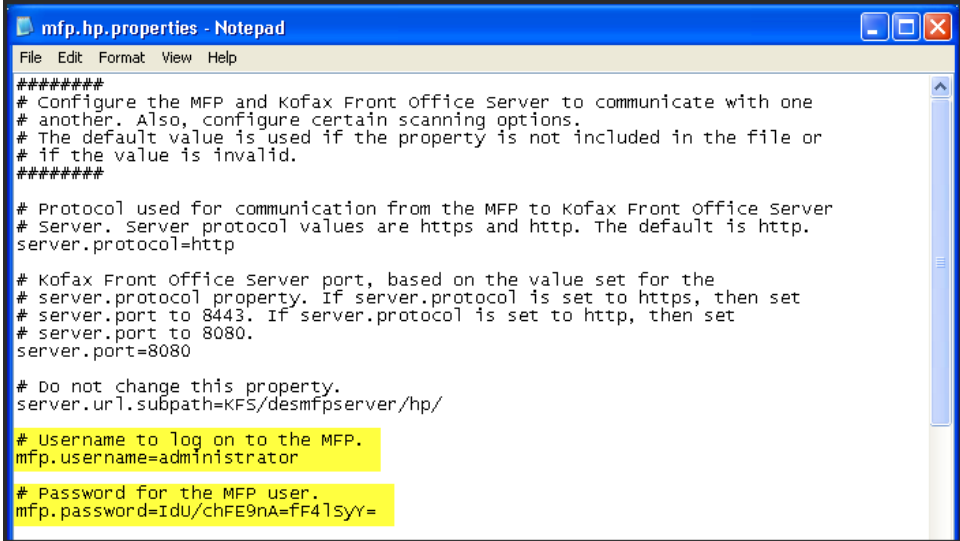


Configuring the mfp.hp.properties File

- 1. Open the mfp.hp.properties file in a text editor, such as Notepad.



- 2. Enter the username and password necessary to access the MFP into the mfp.username and mfp.password entries.



Installing OXPd 1.4.8.0 on HP MFPs for Use with KFS 3.x

Application Note

- 3. If an SSL connection is to be used for communication between the MFP and the KFS server, change the server.protocol to https and the server.port to 8443. Otherwise, leave these values unchanged.

```
mfp.hp.properties - Notepad
File Edit Format View Help
#####
# Configure the MFP and Kofax Front Office Server to communicate with one
# another. Also, configure certain scanning options.
# The default value is used if the property is not included in the file or
# if the value is invalid.
#####
# Protocol used for communication from the MFP to Kofax Front Office Server
# Server. Server protocol values are https and http. The default is http.
server.protocol=http
# Kofax Front Office Server port, based on the value set for the
# server.protocol property. If server.protocol is set to https, then set
# server.port to 8443. If server.protocol is set to http, then set
# server.port to 8080.
server.port=8080
```

- 4. Restart the KFS service. The mfp.password will be automatically encrypted once the KFS service is restarted.

Deploying the KFS Front Panel

Instructions for deploying the KFS Front Panel using the KFS Administration Console are located in the “Deploying the Kofax Front Office Server Front Panel” section of the Administrator’s Guide for HP MFPs. Please choose the Administrator’s Guide link that is appropriate for the specific version of KFS 3.x that is installed:

- [Kofax Front Office Server 3.0 Administrator’s Guide for HP MFPs](#)
- [Kofax Front Office Server 3.5 Administrator’s Guide for HP MFPs](#)