

Overview of Licensing Kofax Capture 10 Scan Module to use the Enhanced Bar Code Engine

Application Note

Date	November 07, 2013
Applies To	Kofax Capture 10.x Scan Module
Summary	This application note provides a detailed overview of the Enhanced Bar Code (EBC) engine and how the Enhanced Bar Code (EBC) engine is licensed and used for the Kofax Capture (KC) 10.x Scan Module.
Revision	1.0

Overview of the Enhanced Bar Code (EBC) Engine

The Enhanced Bar Code (EBC) engine allows Kofax Capture to process color bar code(s) directly from color images. This engine also provides color bar code processing for images with a DPI as low as 100 and provides reading capabilities for one- and two-dimensional (2-D) bar code types from color or bitonal images. The following 2-D bar code types are supported by the EBC engine

- Aztec Code
- Data Matrix
- MaxiCode
- PDF 417
- QR-Code

NOTE: EBC does not support Linear 2 of 5.

EBC is typically more accurate than the Standard Bar Code Engine, especially for low-quality or low DPI images. EBC adopts a more stringent interpretation of the bar code specifications. In rare cases, some bar codes that are slightly out of specification or very long may not be properly read. The Standard Bar Code Engine, which supports one-dimensional bar code types only, offers a more lenient interpretation of bar code specifications.

- [Enhanced Bar Code License Types](#)
- [Use Cases for the Enhanced Bar Code Engine License](#)
- [Configuring KC Scan to use the Enhanced Bar Code Engine](#)

Overview of Licensing Kofax Capture 10 Scan Module to use the EBC Engine

Application Note

Enhanced Bar Code License Types

The three types of Enhanced Bar Code (EBC) licensing is described below.

1. Enhanced Bar Code Hardware Key.

If you are using this hardware key, you must shut down all Kofax Capture modules before you attach the Enhanced Bar Code Engine hardware key. Failure to do so will yield unpredictable processing results.

NOTE: An Enhanced Bar Code Hardware Key will not appear in the Kofax Capture License utility.

2. Enhanced Bar Code Station License

Station Licenses	Available	Maximum	Expiration Date
Concurrent Station	5	5	(none)
Enhanced Bar Code Engine	1	1	(none)

3. VRS Workgroup or higher license. This license can be activated as one of the following.

- A VRS standalone license.

NOTE: A VRS standalone license will not appear in the Kofax Capture license utility.

- A VRS Station license.

NOTE: A VRS Station license will display the VRS line item in the Kofax Capture License utility; however it will not show the Enhanced Bar Code Engine line item.

Station Licenses	Available	Maximum	Expiration Date
Concurrent Station	5	5	(none)
VRS Professional for Production Scanning	1	1	(none)

Use Cases for the Enhanced Bar Code Engine License

Below is a list of EBC license use cases.

- Document separation using 2-D bar codes.
- Document separation when scanning or software importing color or grayscale images.
- Document separation using color images with low DPI values.

In order for EBC to be utilized, all the conditions described below must be met.

1. An EBC license is available (hardware key, Station license, VRS workgroup or higher license, hardware VRS scanner).
2. Scan or software import Document separation.

Overview of Licensing Kofax Capture 10 Scan Module to use the EBC Engine

Application Note

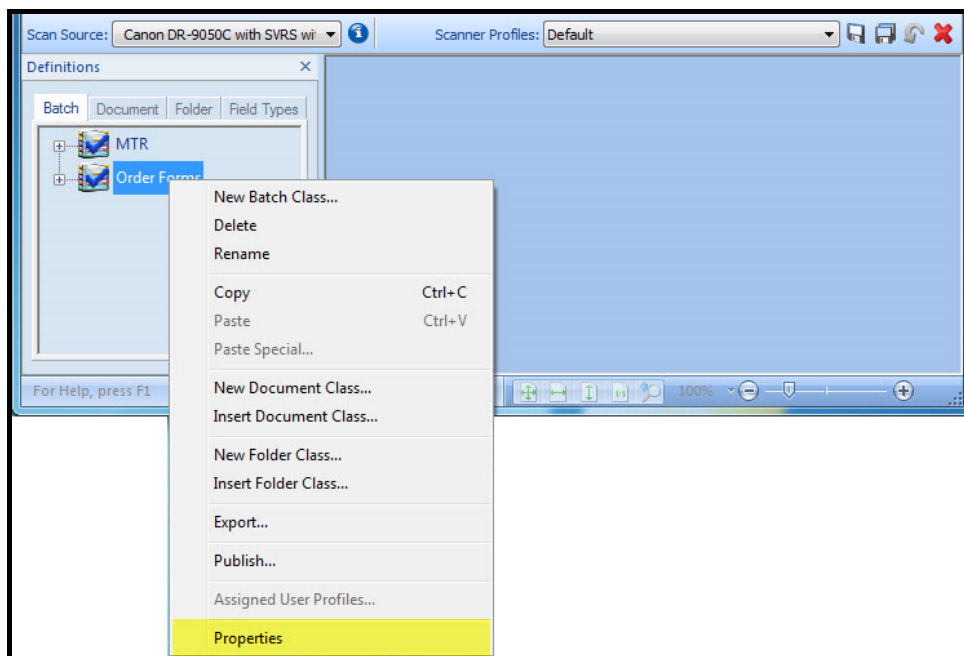
3. Color or grayscale scanning and/or software importing using any bar code types OR bitonal scanning and/or software importing of bitonal images with 2-D bar code types.

NOTE: EBC is not used for Patch Code separator sheets. Patch code separator sheets scanned or imported in color or grayscale will not perform document separation. Separation will occur during Recognition.

Configuring KC Scan to use the Enhanced Bar Code Engine

The Enhanced Bar Code engine is configured through the Kofax Capture Administration module.

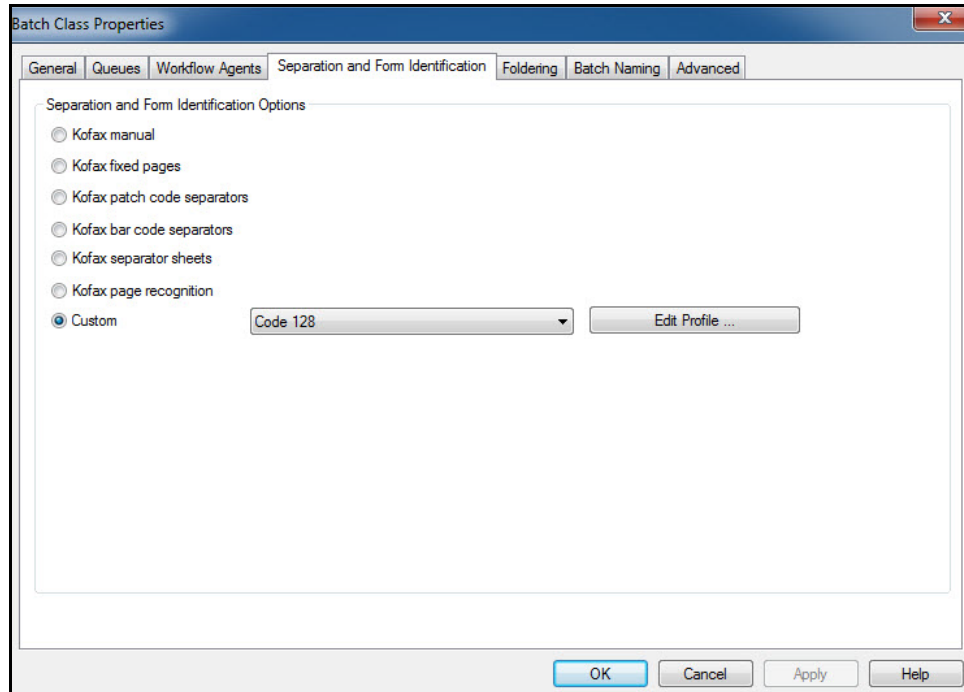
1. Right click on the batch class to be configured and select Properties.



Overview of Licensing Kofax Capture 10 Scan Module to use the EBC Engine

Application Note

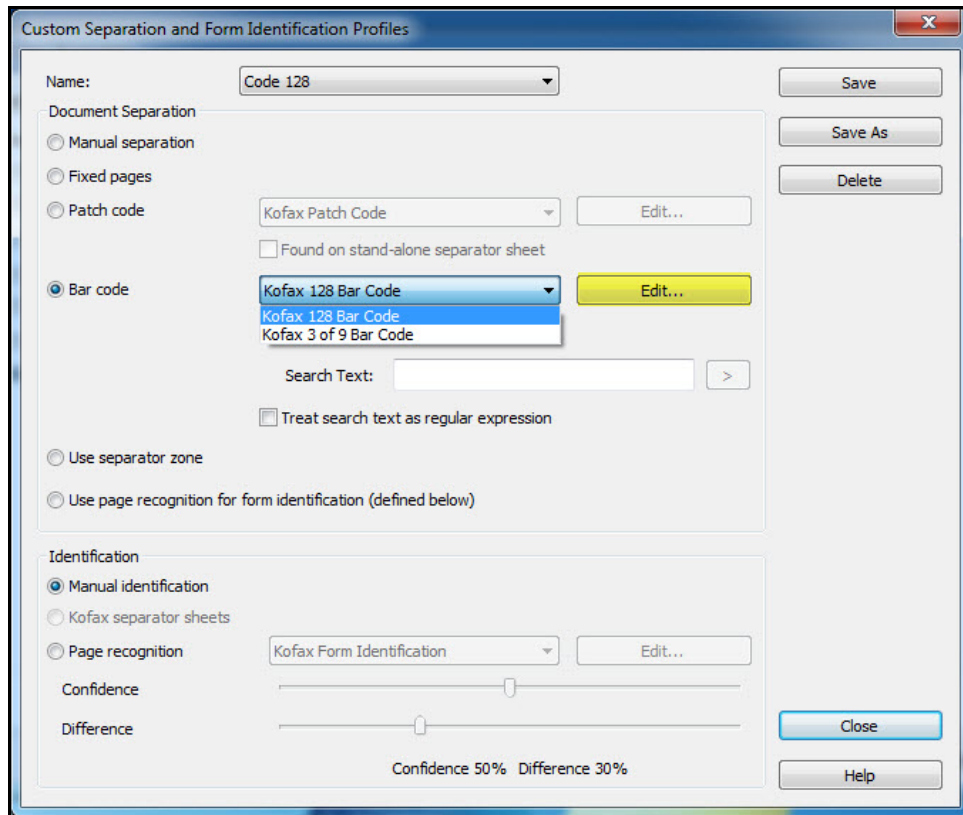
2. In the Batch Class Properties window, click on the Separation and Form Identification tab.
 - a. Select the Custom radio button. Select any profile, as a new one will be created in a later step.
 - b. Click the Edit Profile... button.



Overview of Licensing Kofax Capture 10 Scan Module to use the EBC Engine

Application Note

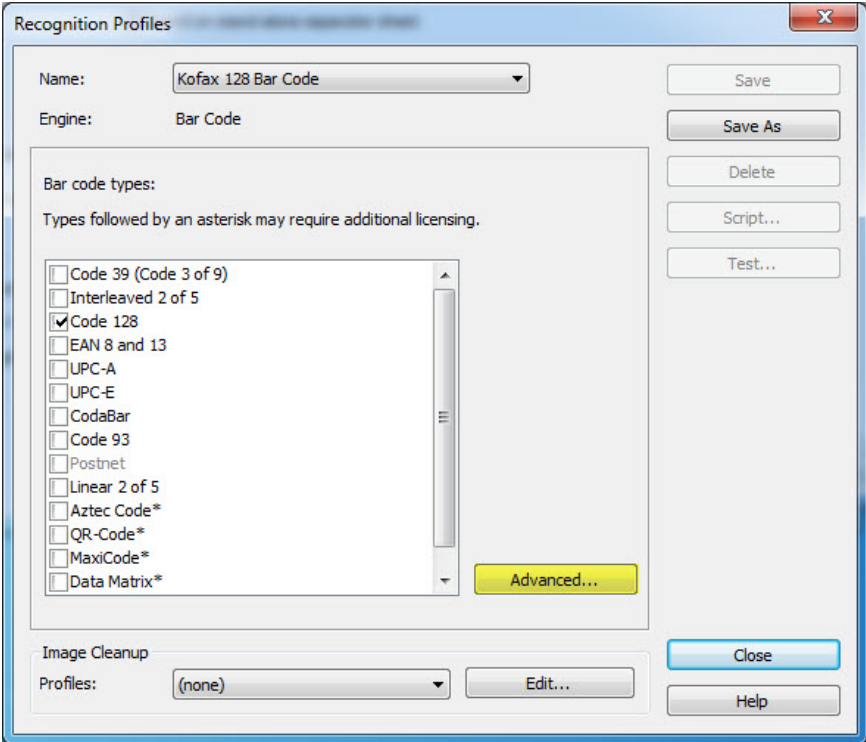
3. In the Custom Separation and Form Identification Profiles window.
 - a. Select the Bar code radio button. Choose any available profile, as a new one will be created.
 - b. Click the Edit ... button.



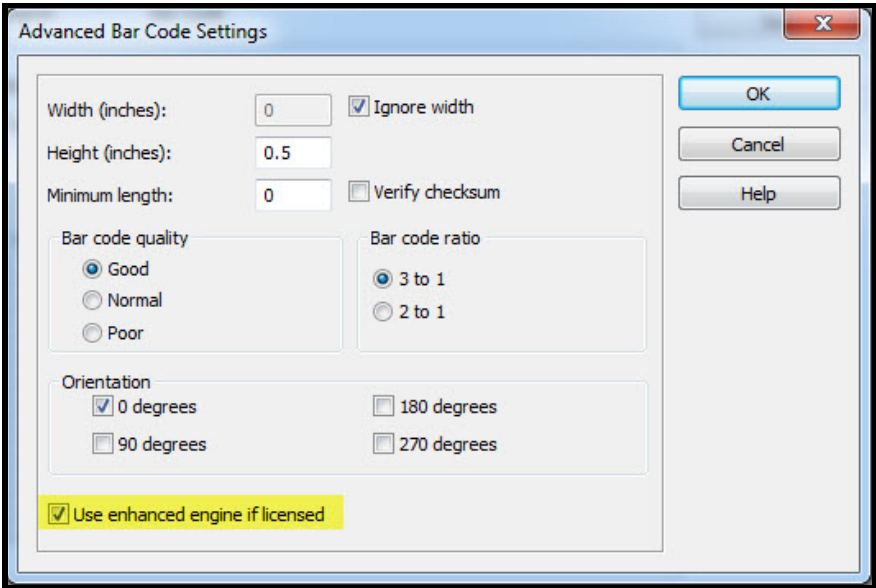
Overview of Licensing Kofax Capture 10 Scan Module to use the EBC Engine

Application Note

- 4. In the Recognition Profiles window.
 - a. Check the boxes for all the desired bar code types.
 - b. Click the Advanced... button.



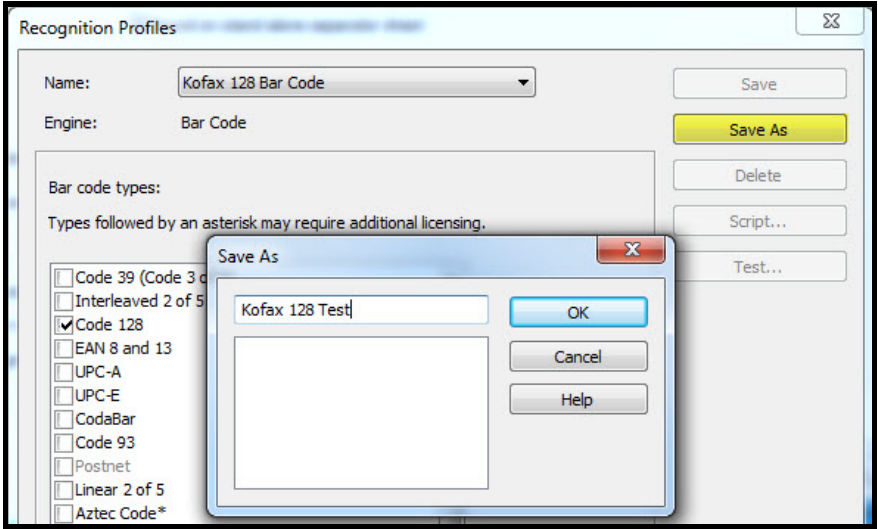
- 5. In the Advanced Bar Code Settings window, check the box next to the Use enhanced engine if licensed option and click OK.



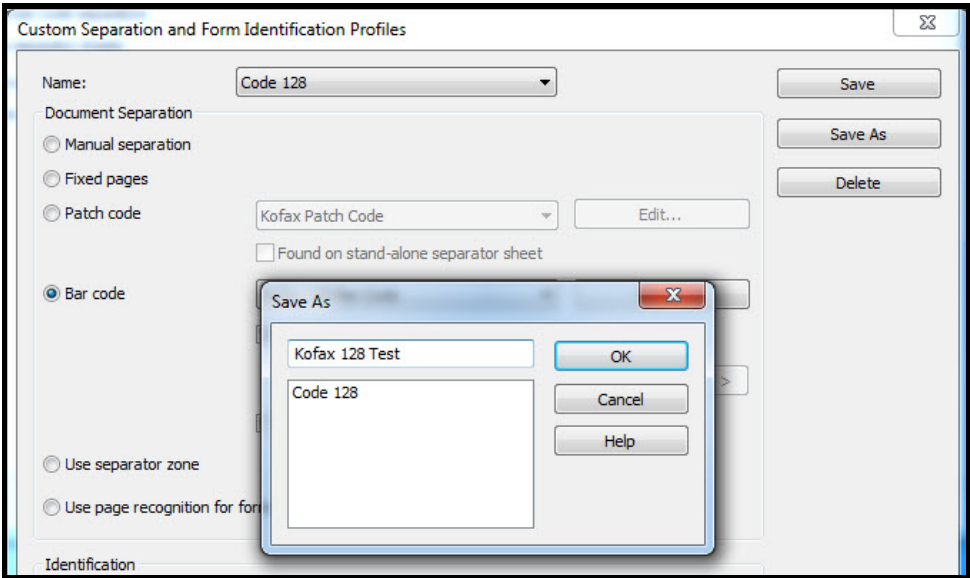
Overview of Licensing Kofax Capture 10 Scan Module to use the EBC Engine

Application Note

- 6. Back in the Recognition Profiles window, click the Save As button, provide a new name for this profile and click Save. Close out of the window.



- 7. Back in the Custom Separation and Form Identification Profiles window, click the Save As button, provide a name for this profile and click Save. Close out of the window.



- 8. Exit out of the Batch Class Properties.
- 9. Publish the batch class for the changes to take effect. Be sure there are no errors during publishing.