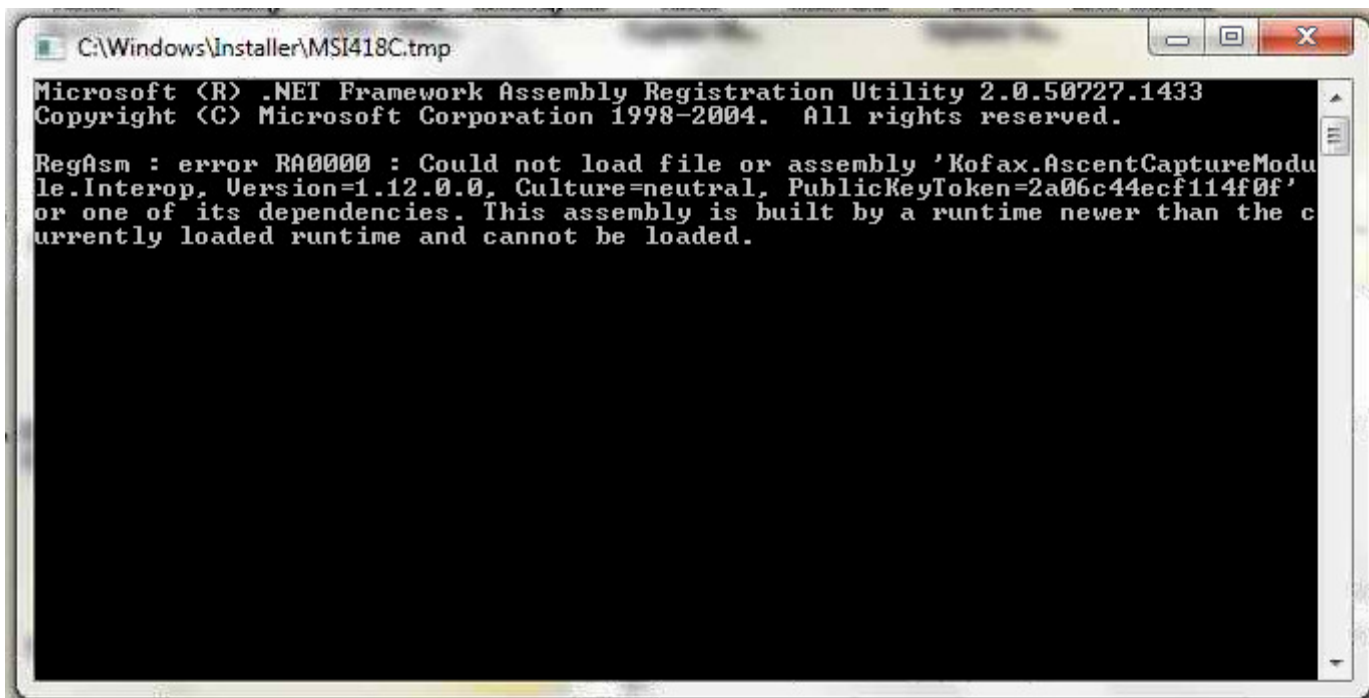


Instructions for Installation and Uninstallation of the KCEC-MarkView Export Connector with Kofax Capture 10.1

Background: The KCEC-MarkView Export connector was created for use with Kofax Capture 10.0.x. This connector may fail to install because 'RegAsm.exe' from .NET 2.0 is used to register the export connector assembly with the system, and .NET 2.0 cannot load .NET 4.0. The following error (or similar) may occur:

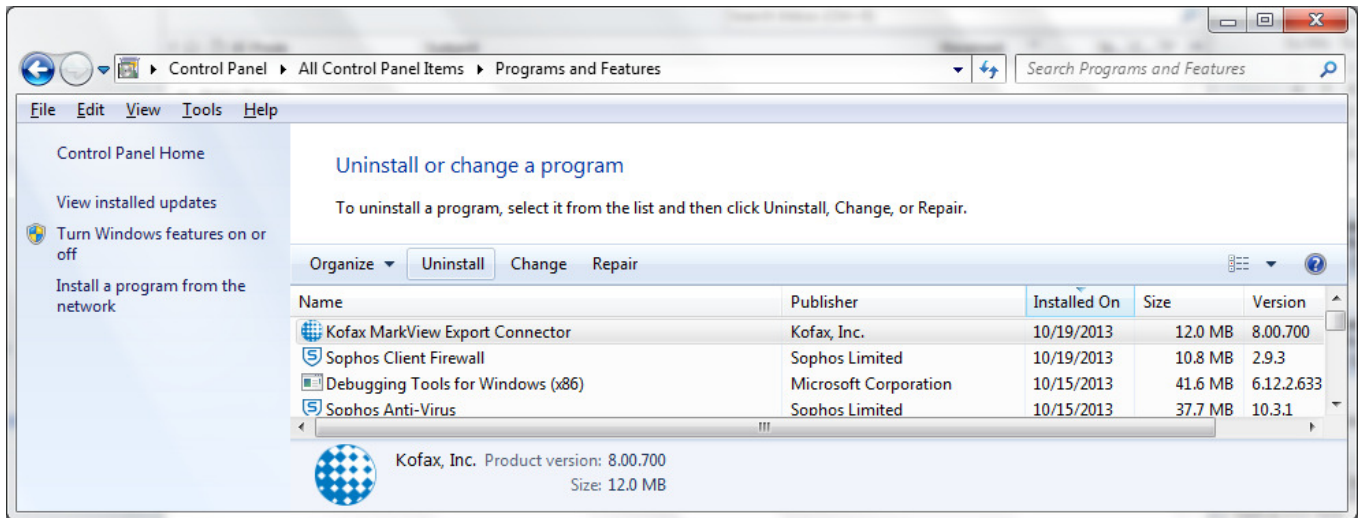


```
C:\Windows\Installer\MSI418C.tmp
Microsoft (R) .NET Framework Assembly Registration Utility 2.0.50727.1433
Copyright (C) Microsoft Corporation 1998-2004. All rights reserved.

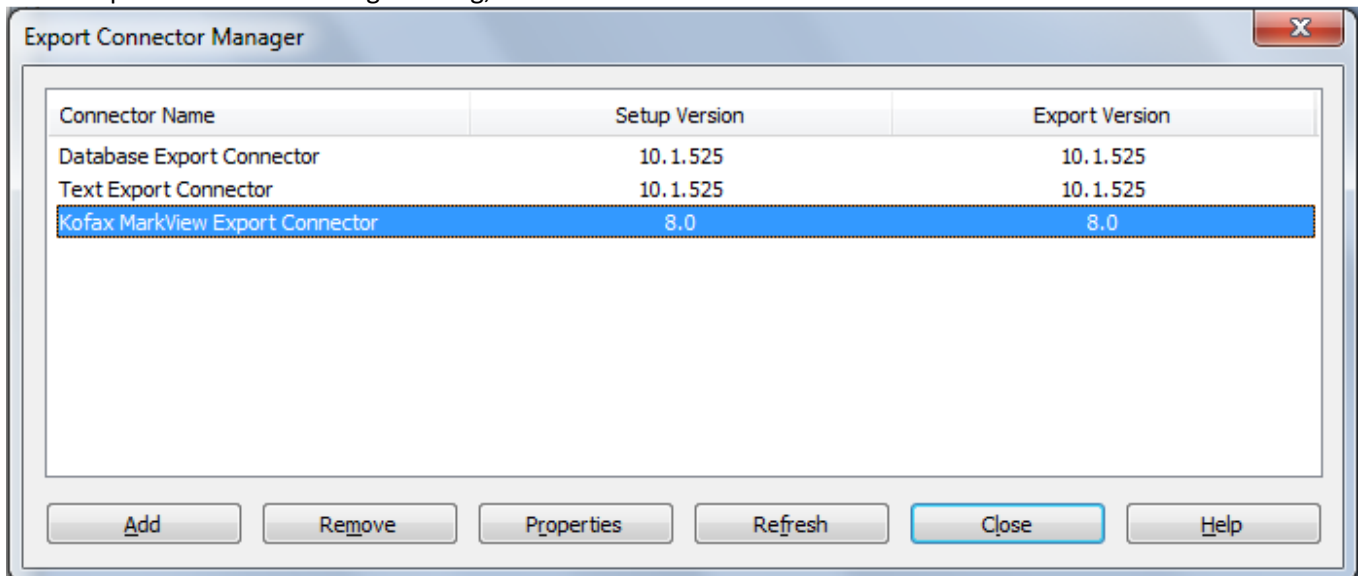
RegAsm : error RA00000 : Could not load file or assembly 'Kofax.AscentCaptureModule.Interop, Version=1.12.0.0, Culture=neutral, PublicKeyToken=2a06c44ecf114f0f' or one of its dependencies. This assembly is built by a runtime newer than the currently loaded runtime and cannot be loaded.
```

Installation:

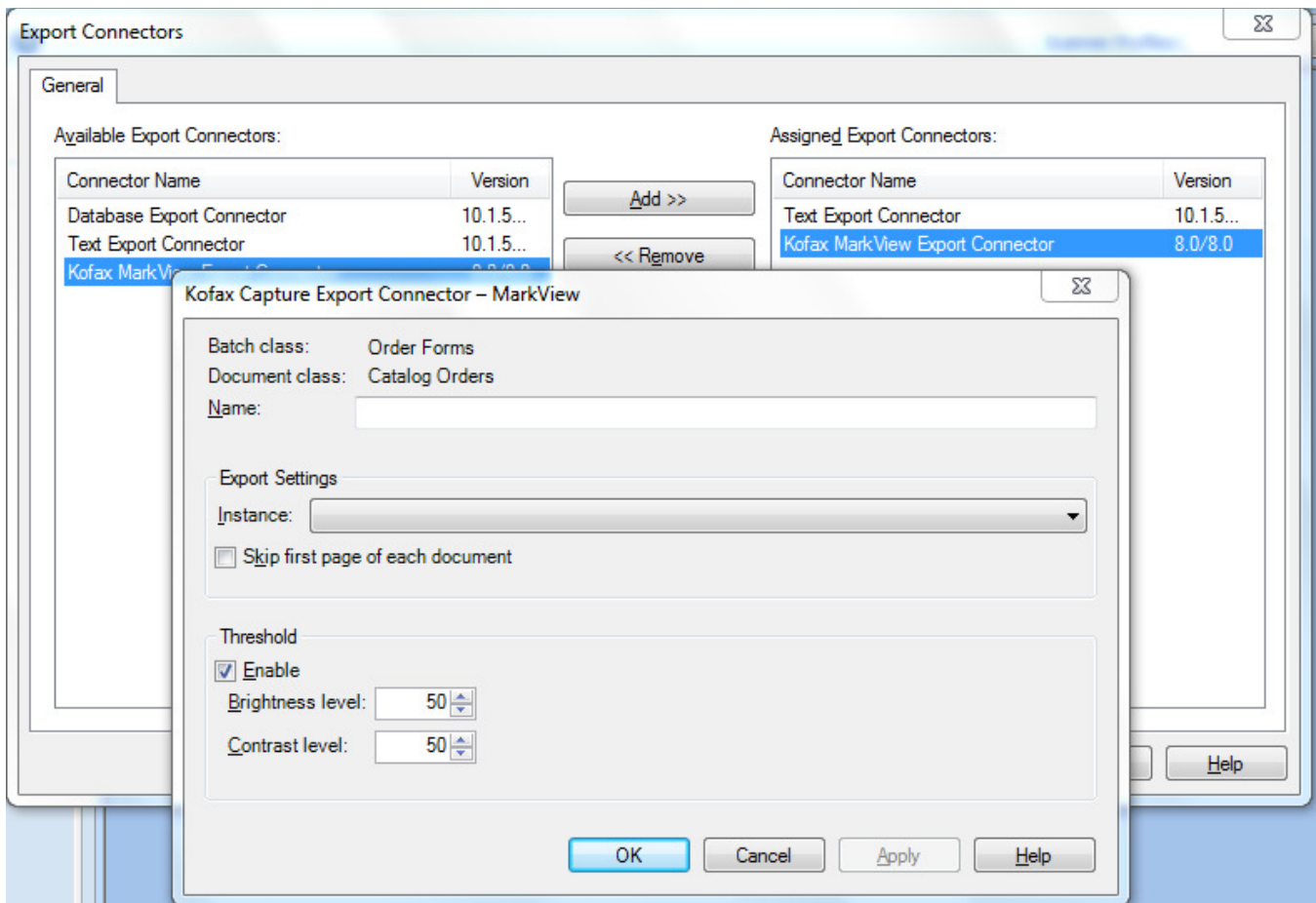
1. Navigate to the Kofax Capture 10.1 installation's Bin folder (Usually C:\program files\kofax\capture\bin), and copy/backup the following files to a safe location (YOU WILL NEED THESE AGAIN):
 - Kofax.ACWFLib.Interop.dll
 - Kofax.DBLiteOpt.Interop.dll
 - Kofax.AscentCaptureAdminMod.Interop.dll
 - Kofax.AscentCaptureModule.Interop.dll
2. Copy the versions of the 4 files included with this document into the same directory as in step 1.
3. Copy the KCEC-MarkView export connector ('KCEC-MarkView.MSI', from your application server) to any desired local folder. Copy the 'kcec-markview.EXE' file (provided with this instruction document) to the same directory where the KCEC-MarkView.MSI has been copied.
4. Right-click on the 'kcec-markview.exe' file and then select 'Run as administrator', this will begin the MarkView export connector installation.
5. Upon Completion of the installation, Verify that the MarkView export connector installed successfully. The 'Kofax MarkView Export Connector' is displayed in Programs and Features as shown below:



- Copy the backup versions of the 4 Kofax Capture 10.1 dll files from Step 1 to the Kofax Capture 10.1 installation's Bin folder. **Important:** If this step is not performed, the Administration Module and other Kofax Capture applications will not run.
- Launch the Kofax Capture Administration module and verify that the Kofax MarkView Export Connector is listed in the Export Connector Manager dialog, as shown below:

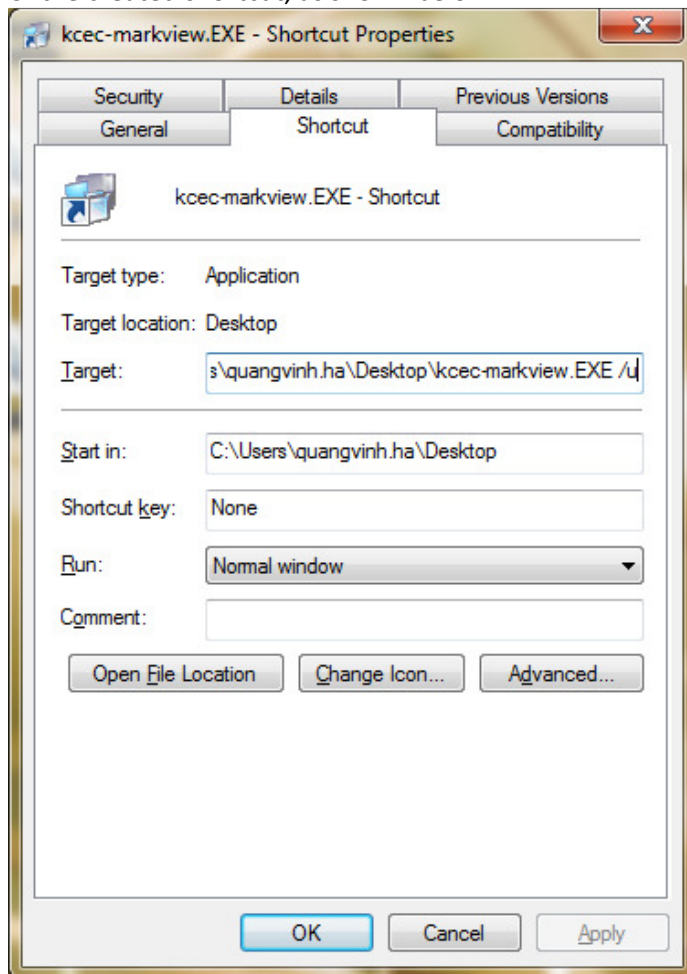


and verify that the MarkView export connector can be added to a document class as shown below:



Uninstallation:

1. Navigate to the Kofax Capture 10.1 installation's Bin folder, and copy/backup the following files to a safe location:
 - Kofax.ACWFLib.Interop.dll
 - Kofax.DBLiteOpt.Interop.dll
 - Kofax.AscentCaptureAdminMod.Interop.dll
 - Kofax.AscentCaptureModule.Interop.dll
2. Copy the versions of the 4 files named in item#1 from the Kofax Capture 10.0.2 build (these files are provided along with this instruction document) and replace the versions of those files in the Kofax Capture 10.1 installation's Bin folder.
3. Right-click on the 'kcec-markview.EXE' file and select 'Create Shortcut'.
4. Right-click on the shortcut that was created in the previous step, and add the '/u' switch to the program target of the created shortcut, as shown below:



and then click 'OK' to save changes to the shortcut.

Note: If quotes are displayed at the end of the target string, add /u after the quotes.

5. Right-click on the shortcut and select and then select 'Run as administrator'. The 'kcec-markview.exe' file then invokes 'KCEC-MarkView.MSI' and begins the MarkView export connector uninstallation. Complete the uninstallation.
6. Verify that the MarkView export connector uninstalled successfully. The 'Kofax MarkView Export Connector' is no longer displayed in Programs and Features.
7. Copy the backup versions of the 4 Kofax Capture 10.1 dll files from Step1 to the Kofax Capture 10.1 installation's Bin folder. **Important:** If this step is not performed, the Administration Module and other Kofax Capture applications will not run.
8. Launch the Kofax Capture Administration module and verify that the Kofax MarkView Export Connector is no longer listed in the Export Connector Manager dialog. Kofax Capture 10.1 functions normally.