

MarkView

Technical Specifications

Version: 9.1

Written by: Product Knowledge, R&D
Date: July 2017

© 2017 Kofax. All rights reserved.

Kofax, the Kofax logo, Kofax product names stated herein are trademarks or registered trademarks of Kofax in the U.S. and other countries. All other trademarks are the trademarks or registered trademarks of their respective owners.

Table of Contents

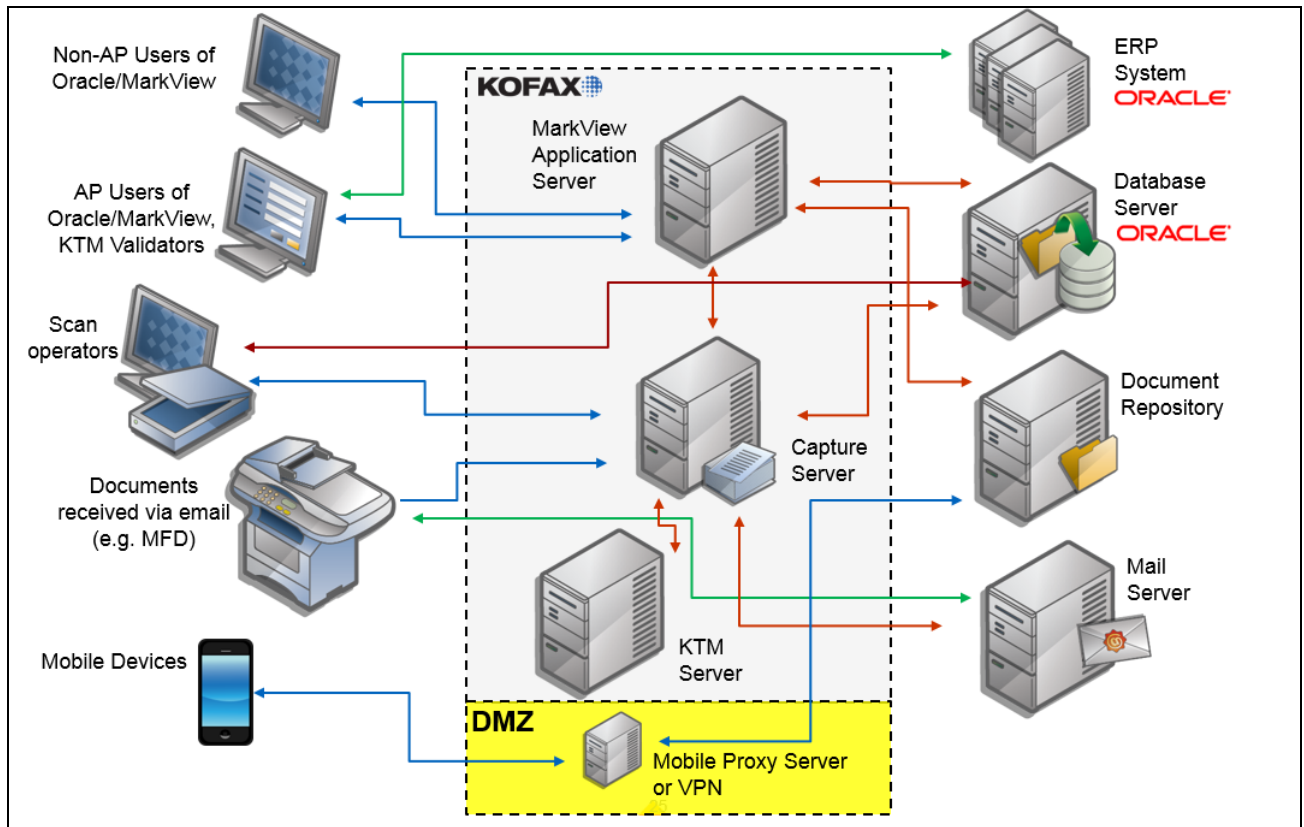
- About MarkView technical specifications 4**
- System architecture..... 4**
- Product requirements..... 5**

About MarkView technical specifications

MarkView is a transactional workflow process automation product that is designed to work with Oracle EBS. The technical specifications in this document are specific to MarkView, version 9.1.

A required amount of memory and disk space is provided. You must meet these requirements to support your MarkView system. These requirements specifically list the needs of MarkView and do not include any amount of memory or disk space you require for the operating system, environment, or other software that runs on the same machine.

System architecture



Product requirements

Specification	Description
<p>Hardware</p>	<p>APPLICATION SERVER(S):</p> <ul style="list-style-type: none"> • MARKVIEW APPLICATION SERVER – STANDALONE SERVER RUNNING MARKVIEW APPLICATION AS A J2EE APPLICATION. <ul style="list-style-type: none"> ○ MINIMUM RECOMMENDATIONS: <ul style="list-style-type: none"> ▪ CPU – MULTI-CORE, 8 CORES -2.4GHZ ▪ MEMORY – 4GB RAM ▪ MEMORY & CPU – DEPENDENT ON THE NUMBER OF CONCURRENT SESSIONS TO BE SUPPORTED. FOR SYSTEMS WITH 25,000 OR FEWER INVOICES PER MONTH, 8 CPU CORES AND 16GB RAM IS RECOMMENDED. ▪ USE APPLICATION SERVER NATIVE SUPPORT FOR MULTIPLE SERVER INSTANCES AS WELL AS CLUSTERING TO ACHIEVE MAXIMUM EFFICIENCY. • CAPTURE & OUTPUT SERVERS – THESE SERVERS SHOULD BE STANDALONE (IT IS NOT RECOMMENDED THAT THEY BE CO-LOCATED ON THE SAME SERVER AS THE MARKVIEW APPLICATION SERVER). KOFAX CAPTURE SERVERS AND KOFAX IMPORT CONNECTOR CAN USE THIS SERVER AS A COMMON POINT OF IMAGE CAPTURE. <ul style="list-style-type: none"> ○ KOFAX CAPTURE SERVERS (OPTIONAL): <ul style="list-style-type: none"> ▪ KIC MESSAGE CONNECTOR ▪ KOFAX CAPTURE NETWORK SERVER ▪ KOFAX CAPTURE SERVER ▪ KOFAX IMPORT CONNECTOR (KIC) PLUGIN ▪ KOFAX TRANSFORMATION MODULES (KTM) ▪ KOFAX VIRTUAL RE SCAN (VRS) ○ MARKVIEW SERVER/COMPONENTS: <ul style="list-style-type: none"> ▪ MARKVIEW BAR CODE SERVER ▪ MARKVIEW DATA EXPORT SERVER ▪ MARKVIEW EXPORT CONNECTOR ▪ MARKVIEW FAX SERVER ▪ MARKVIEW IMPORT SERVER ▪ MARKVIEW PROCESS MAIL GATEWAY ○ MINIMUM RECOMMENDATIONS – FAX SERVER:

	<ul style="list-style-type: none"> ▪ CPU – 2.4GHZ ▪ MEMORY - 1GB RAM ▪ DISK SPACE – 10GB ▪ REQUIRES ANALOG DIALOGIC BROOKTROUT TR1034 FAX BOARD (CAN BE PCI OR PCI EXPRESS) AND FSP 6.7.4 DRIVERS <ul style="list-style-type: none"> ○ MINIMUM RECOMMENDATIONS – ALL OTHER SERVERS: <ul style="list-style-type: none"> ▪ CPU – MULTI-CORE, 2 CORES - 2.4GHZ ▪ MEMORY – 8 TO 16 GB RAM ▪ DISK SPACE – 40GB ▪ ALLOCATE AN ADDITIONAL 4GB OF RAM FOR THE KOFAX IMPORT CONNECTOR <ul style="list-style-type: none"> • ORACLE EBS FORMS SERVER – THIS SHOULD ALREADY EXIST IN THE ORACLE EBS ENVIRONMENT. WILL BE USED TO STORE MARKVIEW CUSTOM LIBRARIES AND FORMS. • DOCUMENT SERVER – THIS IS THE FILE STORAGE SYSTEM WHERE MARKVIEW STORES IMAGE FILES. THIS CAN BE MARKVIEW OR ONE OF THE SUPPORTED THIRD PARTY ECM SOLUTIONS. <ul style="list-style-type: none"> ○ DISK SPACE REQUIREMENTS – MARKVIEW USES THE CCITT GROUP VI TIFF FORMAT AT 300DPI TO STORE IMAGES. THE AVERAGE IMAGE SIZE IS 8.5X11” AND REQUIRES 50KB FOR STORAGE. TO CALCULATE ANNUAL STORAGE REQUIREMENTS MULTIPLY 50KB BY THE TOTAL NUMBER OF PAGES TO BE PROCESSED ANNUALLY. <p>DATABASE REQUIREMENTS (DOCUMENT IMAGES ARE NOT STORED IN THE DATABASE):</p> <ul style="list-style-type: none"> • MARKVIEW SCHEMA – WILL BE INSTALLED IN THE ORACLE FINANCIALS DATABASE. • KOFAX CAPTURE SCHEMA – CAN BE AN INSTALLED IN THE ORACLE FINANCIALS DATABASE OR ON ANY SUPPORTED DATABASE SERVER AND DOES NOT NEED TO BE COLLOCATED WITH ORACLE EBS. • MINIMUM RECOMMENDATIONS: <ul style="list-style-type: none"> ○ DATABASE BLOCK SIZE – MUST BE AT LEAST 8K. SMALLER VALUES MAY DECREASE PERFORMANCE. ○ DISK SPACE – BASED ON THE NUMBER OF INVOICE PAGES STORED ANNUALLY: <ul style="list-style-type: none"> ▪ > 1,000,000 INVOICES PER YEAR – 35 GB ▪ 500,000 INVOICES PER YEAR – 17 GB ▪ =< 100,000 INVOICES PER YEAR – 4 GB
--	---

- RATIO OF TABLE DATA TO INDEX DATA IS APPROXIMATELY 45-55%; E.G., A DATABASE CONSUMING 10GB WILL HAVE 5.5GB TABLE DATA AND 4.5GB INDEX DATA.

DESKTOP/WORKSTATIONS:

- KOFAX CAPTURE SCAN STATIONS – SCANNERS COMPATIBLE WITH KOFAX CAPTURE WILL BE INSTALLED ON DESIGNATED USER DESKTOP SYSTEMS.
- KOFAX KTM VALIDATION STATIONS – EACH USER THAT WILL PARTICIPATE IN THE EXTRACTED DATA VALIDATION/VERIFICATION PROCESS WILL NEED ACCESS TO MARKVIEW.
- MINIMUM RECOMMENDATIONS:
 - CPU – MULTICORE CPU, 2 CORES
 - MEMORY – 2MB MINIMUM, 4GB RECOMMENDED
 - DISK SPACE – 100MB
 - MONITOR – DUAL MONITORS (20" OR LARGER)

TERMINAL/VIRTUAL SERVER ENVIRONMENT SUPPORT

- TERMINAL SERVERS ARE SUPPORTED – E.G., CITRIX XENAPP SERVER. THE TERMINAL SERVER MUST MEET THE MINIMUM HARDWARE REQUIREMENTS SET BY THE APPLICATION PROVIDER (E.G., CITRIX).
 - CITRIX XENAPP VERSIONS SUPPORTED:
 - XENAPP SERVER 7
 - XENAPP SERVER 6
 - NOTE: ADD AN ADDITIONAL 256MG OF RAM (MINIMUM) FOR EACH CONCURRENT VIEWER SESSION TO BE SUPPORTED. CONSULT THE TERMINAL SERVER PLANNING DOCUMENTATION FOR ADDITIONAL GUIDELINES.
- VIRTUAL SERVERS/CONTAINERS – ALL VIRTUALIZED ENVIRONMENTS ARE SUPPORTED AS LONG AS THE UNDERLYING PLATFORM ADHERES TO THE SPECIFICATIONS OUTLINED IN THIS TECH SPEC DOCUMENT. THIS EXCLUDES THE USE OF THE SPARSE ROOT CONFIGURATION OF SOLARIS ZONES, WHICH IS NOT SUPPORTED. IF A SUPPORT ISSUE SHOULD ARISE AND TECHNICAL SUPPORT SUSPECTS THAT THE ISSUE IS DIRECTLY RELATED TO THE VIRTUAL ENVIRONMENT, THE CUSTOMER MAY BE REQUESTED TO REPRODUCE THE ISSUE IN A NON-VIRTUAL ENVIRONMENT.

	<p>HIGH AVAILABILITY OPTIONS SUPPORTED:</p> <ul style="list-style-type: none"> • ORACLE REAL APPLICATION CLUSTERS <p>MOBILE DEVICES SUPPORTED (FOR MOBILE MARKVIEW)</p> <ul style="list-style-type: none"> • APPLE <ul style="list-style-type: none"> ○ APPLE DEVICES USING SAFARI BROWSER AND IOS 10.X OR HIGHER • ANDROID <ul style="list-style-type: none"> ○ ANDROID DEVICES USING STANDARD ANDROID BROWSER AND ANDROID OS 6.0.X OR HIGHER <p>SECURITY AND PROTOCOLS</p> <ul style="list-style-type: none"> • HTTP • HTTPS
<p>Accessibility</p>	<p>BANDWIDTH RECOMMENDATION(S):</p> <ul style="list-style-type: none"> • STANDARD BUSINESS NETWORK CONNECTIVITY IS ACCEPTABLE <p>USER AUTHENTICATION METHODS SUPPORTED:</p> <ul style="list-style-type: none"> • LDAP • ACTIVE DIRECTORY (AD) <ul style="list-style-type: none"> ○ MICROSOFT ACTIVE DIRECTORY 2008 STANDARD & R2 • ORACLE INTERNET DIRECTORY (OID) • MARKVIEW BUILT-IN • MARKVIEW CUSTOM • ORACLE EBS
<p>Browser</p>	<p>INTERNET EXPLORER 11</p> <ul style="list-style-type: none"> • COMPATIBILITY VIEW IS NOT SUPPORTED • <i>WINDOWS 10 NOTE: IE11 WORKS WITH THE LIMITATION THAT THE ZOOM FEATURE INTERFERES WITH VIEWER OPTIONS – BUG 561694</i> <p>INTERNET EXPLORER 10</p> <p>EDGE 20</p> <p>CHROME</p> <p>FIREFOX</p>

	<p>SAFARI</p> <ul style="list-style-type: none"> • APPLE OS AND APPLE DEVICES ONLY • VERSION 9+ SUPPORTED
Mobile Operating Systems	<p>APPLE OS</p> <ul style="list-style-type: none"> • IOS 10.X OR HIGHER <p>ANDROID OS</p> <ul style="list-style-type: none"> • ANDROID OS 6.0.X OR HIGHER
Client Operating Systems	<p>MICROSOFT WINDOWS</p> <ul style="list-style-type: none"> • WINDOWS 10 64-BIT • WINDOWS 8 AND 8.1 PRO/ENTERPRISE (32 OR 64-BIT) DESKTOP MODE • WINDOWS 7 ENTERPRISE/PROFESSIONAL/ULTIMATE/SP1 (32 OR 64-BIT) <p>APPLE</p> <ul style="list-style-type: none"> • MAC OSX 10.X (X>=6)
Server Operating Systems	<p>CAPTURE & OUTPUT SERVERS</p> <ul style="list-style-type: none"> • MICROSOFT WINDOWS <ul style="list-style-type: none"> ○ 2012 R2 FOUNDATION – ESSENTIALS, STANDARD, DATACENTER ○ 2008 – STANDARD, ENTERPRISE, DATACENTER EDITION (32 OR 64-BIT) W/SP2 ○ 2008 R2 – STANDARD, ENTERPRISE, DATACENTER EDITION (64-BIT) W/SP1 <p>MARKVIEW FOR ORACLE EBS</p> <ul style="list-style-type: none"> • WE SUPPORT ALL SUPPORTED ORACLE OPERATING SYSTEMS • REQUIRES JAVA 6, 7 OR 8 (MINIMUM OF 1.7 U65 FOR WINDOWS 2012 R2) <p>DATABASE SERVER(S)</p> <ul style="list-style-type: none"> • ALL OPERATING SYSTEMS SUPPORTED BY DATABASE VENDOR ARE SUPPORTED UNLESS OTHERWISE NOTED
Web Servers/Web Application Servers	<p>JBOSS EAP / WILDFLY</p> <ul style="list-style-type: none"> • JBOSS EAP VERSION 6.4 • WILDFLY VERSIONS 8.2 AND 10.0 • BOTH STANDALONE AND DOMAIN MODES ARE SUPPORTED • SUPPORTED JAVA SDK OPTIONS:

	<ul style="list-style-type: none"> ○ WILDFLY 8.2 REQUIRES JAVA SDK 7 OR 8 ○ WILDFLY 10 REQUIRES JAVA SDK 8 • SUPPORTED PLATFORMS <ul style="list-style-type: none"> ○ REDHAT LINUX (64 BIT) <ul style="list-style-type: none"> ▪ 7.X (X>=0) ES AND AS ▪ 6.X (X>=0) ES AND AS ○ SUSE LINUX 11 ON JAVA 1.8 ○ MICROSOFT WINDOWS SERVER (64 BIT) <ul style="list-style-type: none"> ▪ 2012 AND R2 STANDARD, ENTERPRISE, DATACENTER EDITION ▪ 2008 AND R2 STANDARD, ENTERPRISE, DATACENTER EDITION AND SP1 ○ SOLARIS 11 (64 BIT) <ul style="list-style-type: none"> ▪ REQUIRES JDK 1.7.0_02+ ○ HPUX (64 BIT) <ul style="list-style-type: none"> ▪ REQUIRES HP JDK 7.0_02+ <p>WEBLOGIC SERVER</p> <ul style="list-style-type: none"> • VERSION 12.1.X (X>=1) • REQUIRES JAVA SDK 7 OR 8 (UNLESS OTHERWISE NOTED) • <i>IF USING ORACLE JDBC DRIVERS VERSION 11.2, USE A MINIMUM OF 11.2.0.3</i> • <i>IF USING ORACLE JDBC DRIVERS VERSION 12.1, YOU NEED TO APPLY ORACLE PATCHES 21043834, 20692348 AND 19028811</i> • SUPPORTED PLATFORMS <ul style="list-style-type: none"> ○ REDHAT LINUX <ul style="list-style-type: none"> ▪ 7.X (X>=0) ES AND AS (64 BIT) ▪ 6.X (X>=0) ES AND AS (64 BIT) ▪ 5.X (X>=0) ES AND AS (64 BIT) ○ ORACLE LINUX <ul style="list-style-type: none"> ▪ 7.X (X>=3) EA AND AS (64 BIT) ▪ 6.X (X>=0) ES AND AS (64 BIT) ▪ 5.X (X>=0) ES AND AS (64 BIT) ○ SUSE LINUX 11 ON JAVA 1.8 ○ HPUX (64 BIT) ON HP JDK 6 ○ WINDOWS SERVER 2012 AND R2 STANDARD, ENTERPRISE, DATACENTER EDITION (64 BIT)
--	---

	<ul style="list-style-type: none"> ▪ REQUIRES JAVA SDK 7 (MINIMUM 1.7 U65) OR JAVA 8 ○ WINDOWS SERVER 2008 AND R2 STANDARD, ENTERPRISE, DATACENTER EDITION (64 BIT) AND SP1 <ul style="list-style-type: none"> ▪ REQUIRES JAVA SDK 7 (MIN 1.7 U65) OR JAVA 8 ○ SOLARIS 11 (64 BIT) <ul style="list-style-type: none"> ▪ REQUIRES JAVA SDK 1.6.0_29+ OR 1.7.0_02+ ○ SOLARIS 10 UPDATE 4+ (SPARC AND SPARC V9 64 BIT) <ul style="list-style-type: none"> ▪ REQUIRES JAVA SDK 1.6.0_05+ OR 1.7.0_02+, AZUL 1.6 (AVM 2.5.0.2) ○ IBM AIX 7.1 (64 BIT) <ul style="list-style-type: none"> ▪ REQUIRES IBM JDK 6 (SR9 FP2 OR HIGHER) OR JDK 7 (SR1+) ▪ DUE TO ORACLE BUG 21043834, VERSION 11 JDBC DRIVERS MUST BE USED – DO NOT USE VERSION 12 DRIVERS
<p>DBMS</p>	<p>ORACLE DBMS</p> <ul style="list-style-type: none"> • ORACLE 12.1.0.X (X>=1), INCLUDING XML DB AND JSERVER • ORACLE 11.2.0.X (X>=1), INCLUDING XML DB AND JSERVER • ORACLE 11.1.0.X (X>=7), INCLUDING XML DB AND JSERVER <p>*SEE THE PLANNING GUIDE FOR DATABASE CONFIGURATION REQ'S</p> <p>*INCLUDES ABILITY TO CONFIGURE DB FOR RAC OR SCAN</p> <p>* ALL OPERATING SYSTEMS SUPPORTED BY THE DB VENDOR ARE SUPPORTED UNLESS OTHERWISE NOTED.</p>
<p>Required 3rd Party Technologies</p>	<p>ADOBE FLASH PLAYER</p> <ul style="list-style-type: none"> • FLASH PLAYER 23+ IS REQUIRED FOR USE WITH THE MARKVIEW VIEWER, PROVIDED THAT THE VERSION IS SUPPORTED BY ADOBE FOR THE OPERATING SYSTEM & BROWSER VERSION BEING USED. • ADOBE OFTEN RELEASES NEW VERSIONS OF THE FLASH PLAYER AND THESE VERSIONS ARE TYPICALLY DOWNLOADED AND INSTALLED AUTOMATICALLY BY SOME CUSTOMERS. WE WILL DO OUR BEST TO SUPPORT NEW VERSIONS OF THE FLASH PLAYER AS SOON AS THEY ARE RELEASED – CONTINUING TO TEST/REPORT ANY NEW ISSUES FOUND. <p>ADOBE PDF VIEWER</p> <ul style="list-style-type: none"> • REQUIRED FOR DIRECT PRINTING FROM MARKVIEW VIEWER <p>MARKVIEW FOR ORACLE EBS</p> <ul style="list-style-type: none"> • ORACLE E-BUSINESS SUITE

	<ul style="list-style-type: none"> ○ 12.2.x (x>=2) <ul style="list-style-type: none"> ▪ ORACLE PATCHES 19644483:R12.AP.C AND 21696441:R12.ZX.C NEED TO BE APPLIED FOR PROPER TAX PROCESSING ▪ ORACLE PATCHES 10050696 AND 11824686 NEED TO BE APPLIED FOR PROPER PERIOD END PROCESSING. ○ 12.1.x (x>=1) <ul style="list-style-type: none"> ▪ R12.AP.X.Y (X>=A Y>=1) ▪ R12.SHT.X.Y (X>=A Y>=1) ▪ R12.OIE.Y (Y>=A) – FOR EXPENSES INTEGRATION <p>ORACLE DATA ACCESS COMPONENTS (ODAC) – FOR CAPTURE & OUTPUT</p> <ul style="list-style-type: none"> • 11.2 32 BIT <ul style="list-style-type: none"> ○ NOTE: MULTIPLE VERSIONS OF ODAC CAN BE INSTALLED ON SAME MACHINE • 12.1 32 BIT <ul style="list-style-type: none"> ○ NOTE: MARKVIEW BARCODE SERVER AND MAIL GATEWAY REQUIRE ORACLE OBJECTS FOR OLE 11
<p>Compatible 3rd Party Technologies</p>	<p>KOFAX MARKVIEW FAX SERVER</p> <ul style="list-style-type: none"> • REQUIRES ANALOG DIALOGIC BROOKTROUT TR1034 FAX BOARD (CAN BE PCI OR PCI EXPRESS) • REQUIRES DIALOGIC FAX SERVER DRIVER VERSION 6.7.4 <p>RIGHTFAX INTEGRATIONS</p> <ul style="list-style-type: none"> • RIGHTFAX 9.4 • RIGHTFAX 9.3 <p>CONTENT REPOSITORIES SUPPORTED:</p> <ul style="list-style-type: none"> • EMC DOCUMENTUM <ul style="list-style-type: none"> ○ 6.5 • IBM DB2 CONTENT MANAGER ENTERPRISE <ul style="list-style-type: none"> ○ 8.4.x ○ 8.3 • FILENET CONTENT MANAGER <ul style="list-style-type: none"> ○ 5.2 ○ 5.1 ○ 5.0

	<ul style="list-style-type: none"> ○ 4.5 • ORACLE WEBCENTER CONTENT ○ 11G
<p>Compatible Kofax Software</p>	<p>MARKVIEW 9.1.1 SUPPORTS THE FOLLOWING PRODUCT VERSIONS:</p> <p>KOFAX CAPTURE (KC)</p> <ul style="list-style-type: none"> • 10.2.x (x>=0) <p>KOFAX TRANSFORMATION MODULE (KTM)</p> <ul style="list-style-type: none"> • 6.1.x (x>=0) <p>KOFAX FRONT OFFICE SERVER</p> <ul style="list-style-type: none"> • 4.1.x OR HIGHER <p>KOFAX SUPPLIER EXPRESS</p> <ul style="list-style-type: none"> • 5.0 OR HIGHER <p>KOFAX ANALYTICS FOR MARKVIEW</p> <ul style="list-style-type: none"> • 1.1 OR HIGHER <p>KIC</p> <ul style="list-style-type: none"> • 2.5 OR HIGHER <p>KOFAX MOBILE CAPTURE</p> <ul style="list-style-type: none"> • 2.6.x
<p>Languages supported</p>	<p>TRANSLATIONS ARE CURRENTLY AVAILABLE FOR USER INTERFACES AND ONLINE HELP, BUT NOT FOR ADMINISTRATIVE INTERFACES OR USER DOCUMENTATION.</p> <p>ENGLISH</p> <p>FRENCH (FRANCE)</p> <p>GERMAN</p> <p>ITALIAN</p> <p>BRAZILIAN PORTUGUESE</p> <p>SIMPLIFIED CHINESE</p> <p>JAPANESE</p> <p>CASTILIAN SPANISH</p> <p>POLISH</p>