

Kofax Transformation Modules 5.0 Quiet Mode Installation

Application Note

Date	May 19, 2010
Applies To	Kofax Transformation Modules 5.0
Summary	This application note provides the instructions for performing a Kofax Transformation Modules 5.0 quiet installation.
Revision	1.0

Kofax Transformation Modules Quiet Mode Installation Overview

The Kofax Transformation Modules Quiet Mode installation allows you to install the product without having to interact with the installation or the system. This automatic installation does not display configuration, progress, feature information, or warning windows. Any error messages that are generated during the installation, will still display.

Quiet Mode Installation

Quiet Mode installation can be used to automate the installation of the Kofax Transformation Modules user-interactive modules, Validation, Correction, Document Review and Verification, on target systems. The complete Kofax Transformation Modules functionality is installed by running the setup from the command line with the Quiet Mode parameter by default, however using the parameters in this document; you may customize your installation.

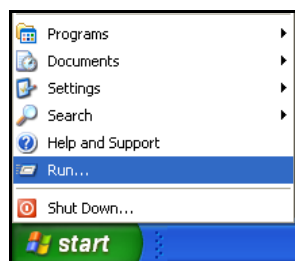
NOTES:

- For Validation, only one step (instance of the module) is installed. If you want to use multiple Validation steps you should pass additional parameters to the Kofax Transformation Modules installer. For more information, see the [Parameters](#) list below.
- By default, Server is installed. To configure the Server and Knowledge Base Learning Server services, you need to start Kofax Transformation - Service Configuration after the Kofax Transformation Modules installation is complete.

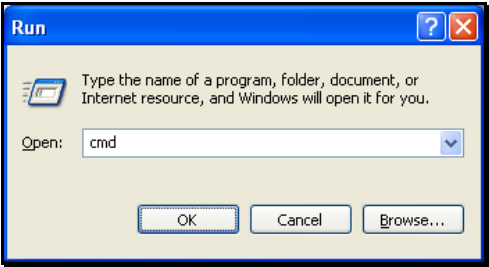
Server Installation

Follow the instructions below to install Kofax Transformation Modules in Quiet Mode.

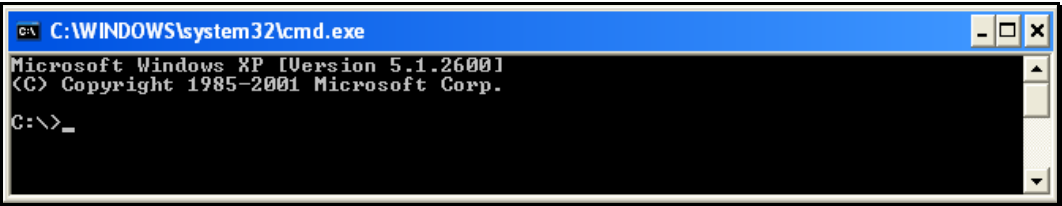
1. From the Start menu, select Run.



- 2. Type "cmd" and press Enter.

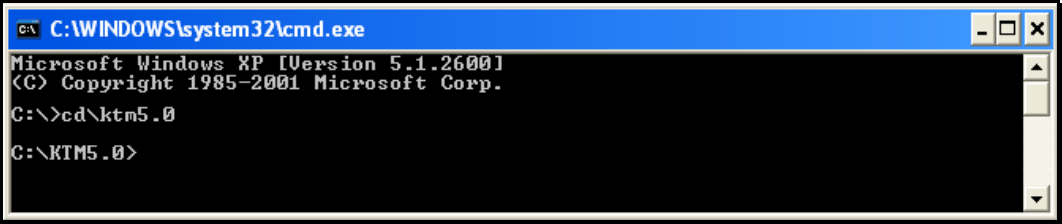


The command prompt window is displayed.



- 3. Change to the folder that contains the Kofax Transformation Modules **Setup.exe** file.

Note: If the **setup.exe** file is located on a network drive, remember to map the network drive first.

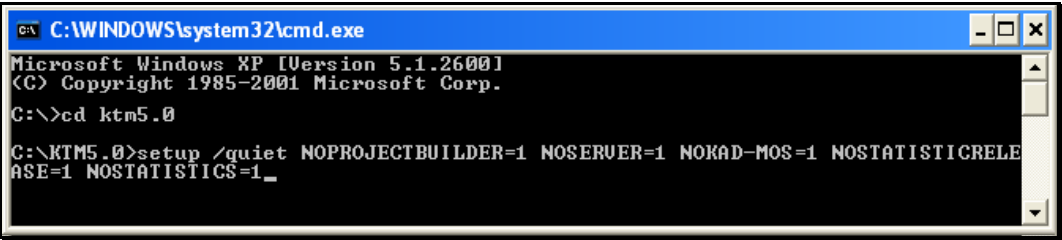


- 4. Run the setup from the command line using whatever parameters you desire.

For example, by typing the following command you can install only the Validation, Correction, Document Review and Verification modules:

```
setup /quiet NOPROJECTBUILDER=1 NOSERVER=1 NOKAD-MOS=1 NOSTATISTICRELEASE=1 NOSTATISTICS=1
```

For more information, see the [Parameters](#) list below.



Parameters**/?**

Shows the Help window.

/quiet

Runs the installer with no user interaction.

/log [filename]

Writes the installer log messages to the specified file.

/uninstall or /u

Uninstalls the product.

property=value

Passes additional parameters to the Windows installer. You can use the following parameters:

NOPROJECTBUILDER=1

Disables Kofax Transformation - Project Builder installation.

NOSTATISTICS=1

Disables Kofax Transformation Modules - Statistics Viewer installation.

NOMODULES=1

Disables installation of all modules in Kofax Transformation Modules. Neither Server, Validation, Correction, Document Review, Verification nor Statistics Release will be installed.

NOSERVER=1

Disables Kofax Transformation Modules - Server installation.

NOVALIDATION=1

Disables Kofax Transformation Modules - Validation installation.

NOCORRECTION=1

Disables Kofax Transformation Modules - Correction installation.

NODOCUMENTREVIEW=1

Disables Kofax Transformation Modules - Document Review installation.

NOVERIFICATION=1

Disables Kofax Transformation Modules - Verification installation.

NOSTATISTICRELEASE=1

Disables Kofax Transformation Modules - Statistics Release installation.

NOKADMOS=1

Disables the KADMOS® recognition engine installation.

VALIDATION2=1

Selects additional Validation step 2 for installation.

VALIDATION3=1

Selects additional Validation step 3 for installation.

VALIDATION4=1

Selects additional Validation step 4 for installation.

VALIDATION5=1

Selects additional Validation step 5 for installation.

A2IA=1

Selects Check and Recursive Recognition, powered by A2iA, as an additional locator optimized for extracting handwritten data from documents and checks for installation.

VERUS=1

Selects Arabic OCR, powered by NovoDynamics Vers 3.0 Pro, as an additional OCR recognition for recognizing of Arabic characters for installation.

FRAddLang=1

Selects ABBYY FineReader's less commonly used languages for installation.

CLIENTINSTALL=1

Allows the installation of Kofax Capture custom modules, such as Server and Validation, without registration and without license ID registration for a client installation, especially if no network is available.