



ImageControls® Version 3.75

Release Notes

10001281-000
Revision A
March 17, 2004

Copyright

Copyright © 2004 Kofax Image Products, Inc. All Rights Reserved. Printed in the U.S.A.

The information contained in this document is the property of Kofax Image Products. Neither receipt nor possession hereof confers or transfers any right to reproduce or disclose any part of the contents hereof, without the prior written consent of Kofax Image Products. No patent liability is assumed, however, with respect to the use of the information contained herein.

Trademarks

Kofax, ImageControls, and Adrenaline are registered trademarks of Kofax Image Products, Inc.

ISIS is a registered trademark of Pixel Translations, a division of Captiva Software Corporation.

All other product names and logos mentioned herein are the property of their respective companies.

Disclaimer

The instructions and descriptions contained in this document were accurate at the time of printing. However, succeeding products and documents are subject to change without notice. Therefore, Kofax Image Products assumes no liability for damages incurred directly or indirectly from errors, omissions, or discrepancies between the product and this document.

An attempt has been made to state all allowable values where applicable throughout this document. Any values or parameters used beyond those stated might have unpredictable results.

Contents

Introduction	1
Supported Operating Systems.....	1
Scanners Newly Certified for Endorsing and Annotation	2
Known Problems in this Release.....	2
Installation Notes	6
Additional Driver Requirements	6
Annotation/Endorser Support.....	6
Overview	6
Implementation	8
Introduction	8
Additional Limitations	9
Fujitsu fi-4750C/fi-4860C/fi-4990C/fi-4340C/fi-4640.....	9
Kodak i200 series (i250, i260).....	10
Kodak DS1500.....	10
Appendix A.....	11
Kofax Scanner Configurator	11
Kofax Technical Support	11

Introduction

ImageControls 3.75 provides the following new features:

- Automatic Endorse/Annotation for selected AIPE/Adrenaline 650i scanners
- New color viewer
- New certified scanners
- Kofax Scan Demo application
- SPR fixes
 - ✓ Additional Tiff-JPEG filter
 - ✓ Deskew Improvements

Included in this release are the following product deliverables:

- Adrenaline 650i Engine
- Adrenaline 650/450 Engine
- Adrenaline Image Processing Engine (AIPE) CD
- Adrenaline Hardware Runtime (AHRT) CD

Please read these release notes carefully as they contain information not included in the printed documentation or online help files. For additional information, refer to the following supporting documentation:

- ImageControls 3.75 Release Notes (this document)
- Adrenaline Image Processing Engine *Getting Started* guide
- Adrenaline 650i *Getting Started* guide
- Adrenaline 650/450 *Getting Started* guide
- Adrenaline Hardware Runtime *Getting Started* guide (very minor updates)
- ImageControls 3 *Programmer's Guide* (PN 10300181-000 Revision A)
- ImageControls 3 *Language Reference* (PN 10300182-000 Revision A)

Supported Operating Systems

The release supports the following operating systems:

- Windows 98 Second Edition
- Windows Me
- Windows NT 4.0 Service Pack 6 or higher
- Windows 2000 Professional
- Windows XP

Scanners Newly Certified for Endorsing and Annotation

The following scanners have now been added to the list of certified scanners for endorsing and annotation.

- Fujitsu *fi-4860C*
- Fujitsu *fi-4990C*
- Fujitsu *fi-4750C*
- Fujitsu *fi-4640*
- Fujitsu *fi-4340C*
- Canon DR-5080C
- Kodak i250
- Kodak i260

Known Problems in this Release

The following list contains open Software Problem Reports (SPRs) for this software release. If you encounter a problem using this release of the software, please check this list to determine whether the problem is related to a known bug. If applicable, note the SPR number prior to contacting Kofax Technical Support.

SPR	Description
------------	--------------------

26008	This SPR is due to a limitation with the Kodak DS3590C scanners. When using the Adrenaline Hardware Runtime, Color Patch Detect, Calibration, and Multifeed settings are not being saved in the Advanced Scanner Properties dialog box for the Kodak DS3590C.
-------	---

Workaround: Manually adjust the Color Patch Detect setting using these steps:

- 1 From the Source menu in VCDemo, select Advanced Properties.
- 2 Click More....
- 3 At the Advanced Properties dialog box, similar to Figure 1, select Color Patch Detect.
- 4 Make selections from the Calibration and Multifeed drop down boxes, as desired.
- 5 Click OK to close the Advanced Properties dialog box.

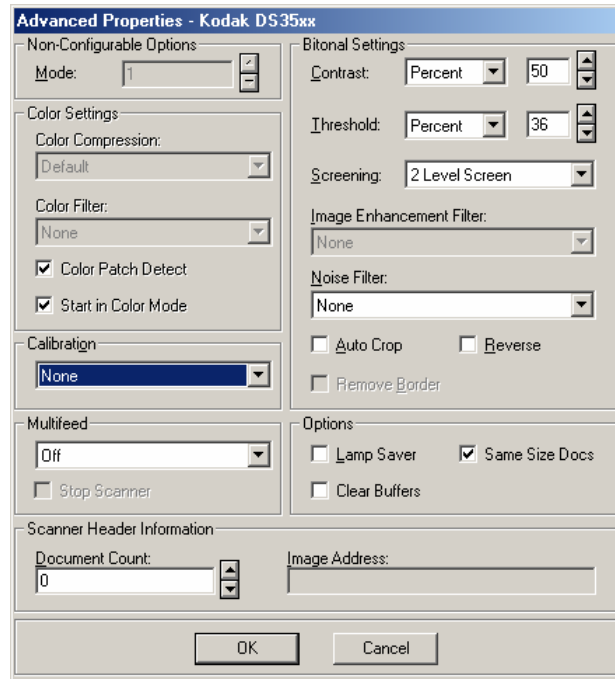


Figure 1. Kodak DS3590C Advanced Properties Dialog Box

28677 This SPR is due to a limitation with the Kodak i260 scanners. The maximum counter number for the Kodak i260 when in 3-digit format is 999. But for some reason, when the counter reaches the maximum (999) and rolls over, the counter number format changes. The scanner endorsing string loses its “padding” zeros. In other words, the endorsing string becomes a “1” instead of “001,” as shown below:

000 → 001 → 002 → → 998 → 999 → 1 → 2 → 3

Workaround: This issue can be corrected by making certain changes to the Kodak i200 series ISIS driver Imprinter dialog box. Use the instructions below to make the change.

► **To modify the Kodak i200 ISIS Driver imprinter dialog box from VCDemo**

- 1 From the Source menu in VCDemo, select Advanced Properties.
- 2 Click More....
- 3 From the Advanced Properties dialog box, click More....
- 4 On the Advanced Settings dialog box, click More....
- 5 At the More Scanner Settings dialog box, click Imprinter....
- 6 Select the Enable Imprinter check box.
- 7 Under the Counter group, select Display Padding Zeros from the Format drop down list.
- 8 Click OK to close each of the open dialog boxes.
- 9 Click the Process Batch button or press Ctrl + B to begin scanning your batch. The padding zeros should appear.

28805 This SPR is due to a limitation with the Fujitsu fi-4860C/4990C scanners. The Fujitsu fi-4860C/4990C ISIS driver for its 16-bit endorser is able to count from 0 to 99999, but the maximum starting number is limited to 65535. It will roll over for starting numbers over 65535. The 24-bit endorser has no such problem. For example, if you set the starting number to be 65535, increment by 1, and scan a batch, the endorser's counter sequence will be 65535 , 65536, 65537, and so on up to 99999. However, using the 16-bit endorser, if you set the starting number to be 80000, which is larger than 65535, the counter sequence will roll over to zero.

Workaround: This is a known limitation for this scanner and is out of our control. For this scanner, the starting number simply cannot be greater than 65535.

29133 This SPR is due to a limitation with the Kodak i260 scanners. This issue is closely related to SPR number 28677 above. There are two problems in this SPR: a) The annotation string does not match the endorser string due to missing padding zeros, and b) the counter skips over the initial 0, going from 999999 to 1.

► **To recreate the problem**

1 Begin by using the following settings:

- Starting Number: 999999
- Digit: 6
- Enable Inc On Page
- Inc On Page Value: 1
- Increment Value: 1
- Reset Off: Reset Off

2 Click OK and scan a batch of six or more documents. The expected results are:

Kofax999999

Kofax000000

Kofax000001

Kofax000002

Kofax000005, etc.

3 But the actual results are:

Kofax999999
Kofax 1
Kofax 2
Kofax 3
Kofax 4
Kofax 5, etc.

Workaround: See the workaround for SPR number 28677 to be able to view the padding zeros. There is no workaround to avoid the skipped zero, however.

29298 This SPR is due to a limitation with the Canon DR-2080C scanners. Scanning with the Canon DR-2080C in AIPE results in a "A required.DLL file CEIIP.DLL was not found 126" message. The user is unable to scan any images.

Workaround: Like the scanners listed on page 6, this scanner's ISIS driver must be manually loaded after installing IC 3.75 for this scanner to work properly.

29788 This SPR is due to a limitation with the Panasonic KV-S2055 scanners. Using the Maximum paper size in VCDemo when scanning with the Panasonic KV-S2055 generates a "Scanner Out of Paper" message in the Status Bar and stops scanning.

Workaround: All other paper sizes seem to work fine. Do not select the Maximum paper size selection to avoid this problem.

29790 This SPR is due to a limitation with the Panasonic KV-2025C/2045C scanners. The AIPE installation does not include the Panasonic KV-2025C/2045C ISIS driver, which may result in driver errors and scanning problems.

Workaround: Like the scanners listed on page 6, this scanner's ISIS driver must be manually loaded after installing IC 3.75 for this scanner to work properly.

Installation Notes

This section addresses installation issues not covered in the getting started guides. Refer to these release notes and the *Getting Started* guide that accompanied your ImageControls product for complete installation instructions.

Additional Driver Requirements

The following scanners are certified for this release of ImageControls. However, the driver is not automatically installed as a part of the IC 3.75 installation. For each of the scanners listed below, use the instructions that shipped with your scanner to install the scanner driver after installing IC 3.75. If the scanner driver was not included with your scanner, contact your scanner manufacturer for more information.

- Canon DR-2080C
- Fujitsu fi-4860C (Use Fujitsu ISIS driver version 1.5.10301.27001 or later version for correct endorsing behavior.)
- Fujitsu fi-4990C (Use Fujitsu ISIS driver version 1.5.10301.27001 or later version for correct endorsing behavior.)
- Inotec Scamax 2x00 Scanner Driver
- Kodak i50/i60
- Kodak i200 Series
- Kodak i800 Series
- Panasonic SCSI KV-SS905C
- Panasonic KV-2025C/2045C
- Visioneer 9650

Annotation/Endorser Support

Overview

The ImageControls Automatic Endorser / Annotation Properties dialog box, shown in Figure 2, allows users of AIPE scanners that are capable of automatic endorsing to enable or disable the automatic endorsement and annotation feature, define the text string, determine counter start values, and other settings of automatic endorsement and annotation.

The Counter Increment and Reset features are controlled by Automatic Endorser / Annotation Properties dialog and Patch Code Properties (Advanced) dialog (see Figure 3) jointly. Patch detection must be enabled when you try to use the Counter Inc On Patch or Counter Reset On Patch features. The "Enable" check box in Patch Code Properties dialog box will be checked automatically by either checking the "Inc On Patch" or "Reset On Patch," but the "Enable" check box can be unchecked later. If this is the case, both increment on patch and reset on patch feature will not work. These features can also be set through ImageControls Kimgp properties. Please refer to the *ImageControls 3 Programmer's Guide* and *Language Reference* for more information on how to use these dialog boxes.

Automatic Endorser/Annotation Properties

Electronic Annotation
 Enable Automatic Annotation

Mechanical Endorser
 Enable Automatic Endorser

Text Definition
 Prefix:
 Top (pixel):
 Left (pixel):

Font Setting
 Type:
 Orientation:

Counter Start
 Starting Number: Digit:
 Skip First Patch Code

Counter Increment
 Increment Value:
 Inc Off
 Inc On Page:
 Inc On Patch:

Counter Reset
 Reset Value:
 Reset Off
 Reset On Page:
 Reset On Patch:

OK Cancel

Figure 2. Automatic Endorser/Annotation Properties Dialog Box

Patch Code Properties (Advanced)

Detection
 Enable
 Use Scanner
 Left Offset To Center of Patch Code (in):

Stop On Patch Code
 Enable Scan Stop

Available:
 Patch Code Type I
 Patch Code Type II
 Patch Code Type III
 Patch Code Type VI

In Use:
 Patch Code Type IV
 Patch Code Type T

Add-> <-Remove
 Add All

OK Cancel

Figure 3. Patch Code Properties Dialog Box

Implementation

Introduction

Due to the differences in scanner drivers and the limitations inherent with them, ImageControls support of endorser features varies between scanners. Refer to Table 1 for information particular to how your scanner's endorser is supported by ImageControls.

Note The ImageControls Auto Endorser/Annotation Properties dialog box and your scanner's ISIS endorser dialog boxes may both be used. Kofax has made every attempt to synchronize the endorser settings between the two dialog boxes. A good rule of thumb when making changes to these dialog boxes is "The Last one Wins." If you make changes to ImageControls dialog boxes after you make changes to the ISIS dialog boxes, the ImageControls settings will supercede the ISIS settings, and vice versa.

Table 1. ImageControls Capability by Scanner Family

Capability Name	Fujitsu fi-4750C/fi-4860C/fi-4990C/fi-4340C/fi-4640	Kodak i250/i260	Panasonic KV-S6045/6055/SS905C + Kodak DS1500
Counter Increment Step	0, 1, 2 ¹	1	1 ~ 9
Counter Start Number	0 ~ 65535 / 99999 (16-bit endorser) ² 0 ~ 16777215 (24-bit endorser)	0 ~ 999999999	1 ~ 9999999
Endorsing string counter Y offset	Converted to pixels	Unable to convert ⁴	Converted to pixels
Endorsing string counter X offset	Not Supported	Not Supported	Not Supported
Auto EA font type	Not Supported	Small / Medium	Small / Medium
Auto EA font orientation	Not Supported ³	Vertical 0°, 90°	Vertical 0°, 90°, 180°, 270°

1: ImageControls doesn't support a negative number as an increment step.

2: Fujitsu fi-4860C: 0~65535, other Fujitsu scanners: 0~99999.

3: Only available through the scanner's generic ISIS endorser dialog box. See instructions on page 10.

4: ImageControls is unable to convert this value into pixels due to a missing ISIS API.

Additional Limitations

The following sections list additional limitations on a per-scanner basis.

Fujitsu fi-4750C/fi-4860C/fi-4990C/fi-4340C/fi-4640

The endorser for these scanners only print counter numbers in a 5 or 8 digit format, depending on whether the scanner is equipped with a 16-bit or a 24-bit endorser. As long as the counter start number digit is 5 or 8, auto endorsement will be executed by the scanner hardware with high throughput. If a counter digit format other than 5 or 8 is selected, ImageControls will switch the scan operation into single page mode with slower throughput. In addition, the endorser text rotation is disabled due to the lack of support by the ISIS API. It is only available through the scanner's generic ISIS endorser dialog box. Follow the instructions below to rotate the endorser string through the generic ISIS dialogs.

- ▶ **To rotate endorser text for the Fujitsu fi-4750C/fi-4860C/fi-4990C/fi-4340C/fi-4640**
 - 1 From the Source menu in VCDemo, select Advanced Properties.
 - 2 From the Advanced Properties dialog box, click More....
 - 3 On the Advanced Settings dialog box, click Endorser....
 - 4 At the Endorser Configuration dialog box, select Print Rotated 180 Degrees.
 - 5 Click OK.

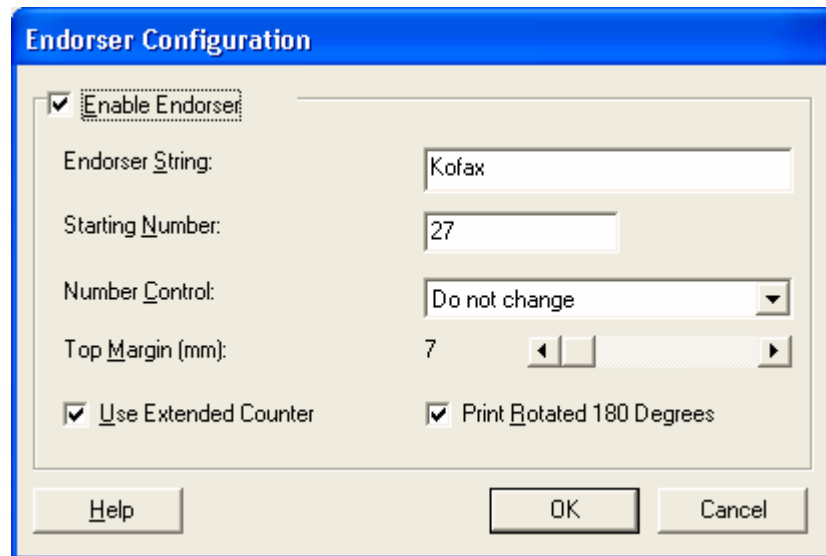


Figure 4. ISIS Endorser Configuration Dialog Box

Kodak i200 series (i250, i260)

The endorser for these scanners allows the start number to begin from zero, but it will restart from one rather than zero when the counter reaches its maximum value, and the padding zero(s) will be gone. See SPR numbers 28677 and 29133.

Kodak DS1500

These scanners only allow the counter start number to begin with one, not zero. See SPR number 28679.

Appendix A

Kofax Scanner Configurator




ImageControls 3.75 supported scanners will be listed as such under the *Kofax Scanner Configurator*. The Kofax Scanner Configurator is an online configuration utility that can be run from the Kofax Web site. To use the configurator, visit the Kofax home page at <http://www.kofax.com>. You will find the Scanner Configurator link under Support on the main menu.

Kofax Technical Support

Kofax provides a range of support options to assist you with our products. You may use the phone/fax numbers and addresses listed below to contact Kofax Image Products, or use the internet resources described below. We do ask that you register our products before calling Technical Support, however. See the *Getting Started* guide that shipped with your Kofax product(s) for registration instructions.

If you call for technical assistance, please have the following information available:

- The name and version number of the application you are using
- Hardware used, including PC and peripherals such as scanners or printers
- The operating system you are using
- A description of what you were doing when the problem occurred
- Any error message text

	Headquarters	European Headquarters
	Kofax Image Products 16245 Laguna Canyon Road Irvine, CA 92618-3603	Kofax Image Products Heide 17 B - 1780 Wemmel / Brussels Belgium
	(949) 727-1733 (voice) (949) 727-3144 (fax)	Phone: +32-2-456-17-20 Fax: +32-2-456-17-21
	http://www.kofax.com (home page) support_kfx@kofax.com (e-mail)	

