

Configuring a Kofax Express 3.1 Database Export Connector

Application Note

Date	July 22, 2014
Applies To	Kofax Express 3.1
Summary	This application note provides details on how to configure a Database Export Connector in the Kofax Express 3.1 product.
Revision	1.0

Database Export Connectors

Kofax Express 3.1 includes the functionality to utilize Capture's Database Export Connectors. Export Connectors are used to export batches to a specified document storage or content management system. All Export Connectors must be installed and registered for use with Kofax Express. The following Export Connectors are automatically installed and registered for use with Kofax Express.

- Multipage
- SharePoint
- Single Page
- Kofax Capture
- Database Export Connector

This application note will focus on how to configure a [Database Export Connector](#).

Important Support Notes

- LZW compression is supported with the Database Export Connectors.
- Single documents cannot be exported through multiple Export Connectors at the same time.
- Multiple Export Connectors cannot be used for different documents in the same batch. The entire batch must be exported using the same connector.
- Kofax Express does not support Export Connectors that run asynchronously.

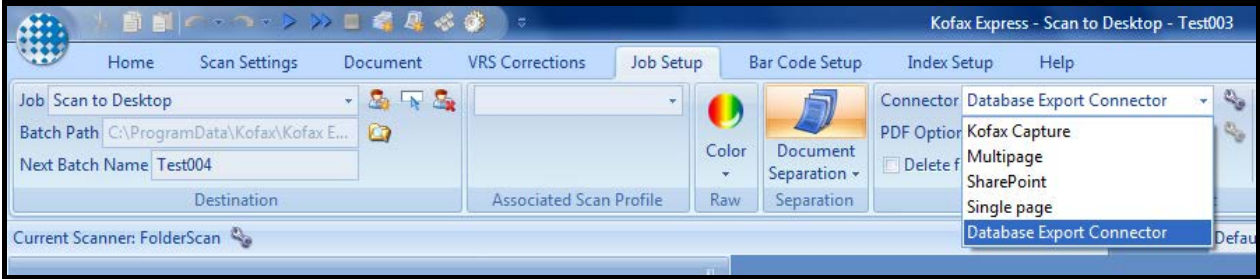
Configuring a Kofax Express 3.1 Database Export Connector

Application Note

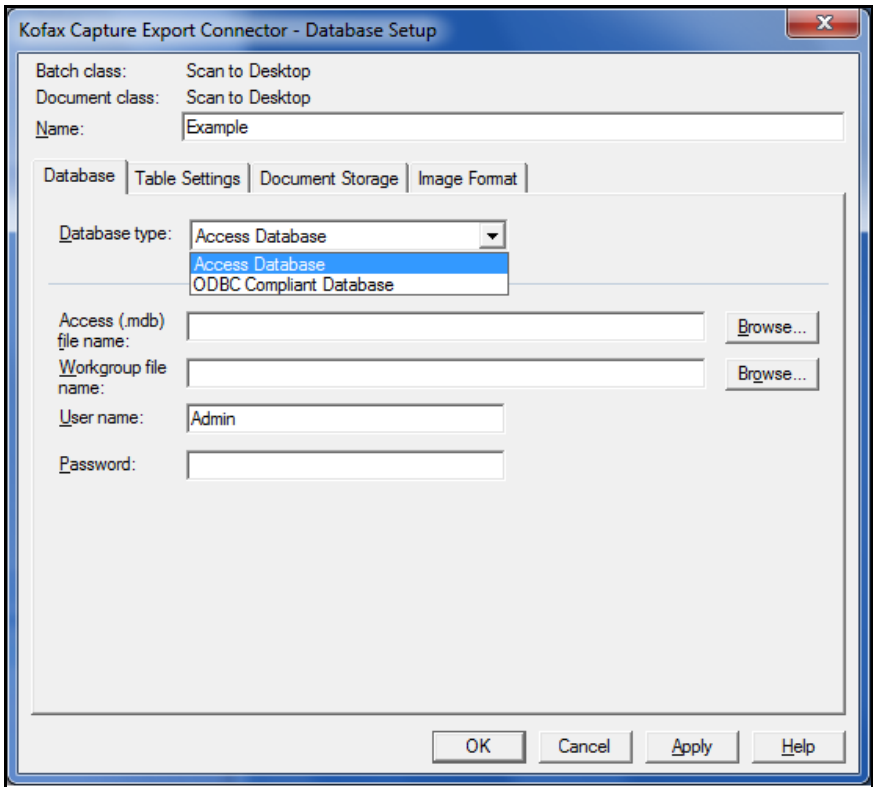
Configuring a Database Export Connector

This section will describe how to configure an Access Database Export Connector in Kofax Express 3.1. For this example, a preexisting Access database with at least two tables each containing a Document ID field will be needed.

1. Launch Kofax Express.
2. Click the Connector dropdown list on the Job Setup tab and choose Database Export Connector.



3. Click the wrench icon next to the Connector drop list to launch the Database Setup window.
4. Type a name for the Database Setup in the Name field, click the Database Type dropdown and select the proper Database type. For this example, an Access database will be used.



Configuring a Kofax Express 3.1 Database Export Connector

Application Note

5. Provide the path to the database by either clicking the Browse button and browsing to, or manually entering the path to the database file. Do the same for the Workgroup file name, if one will be used. The User name and Password may be changed at this time if desired.

Kofax Capture Export Connector - Database Setup

Batch class: Scan to Desktop
 Document class: Scan to Desktop
 Name: Example

Database | Table Settings | Document Storage | Image Format

Database type: Access Database

Access (.mdb) file name: C:\KXP db\KXP Release.mdb

Workgroup file name:

User name: Admin

Password:

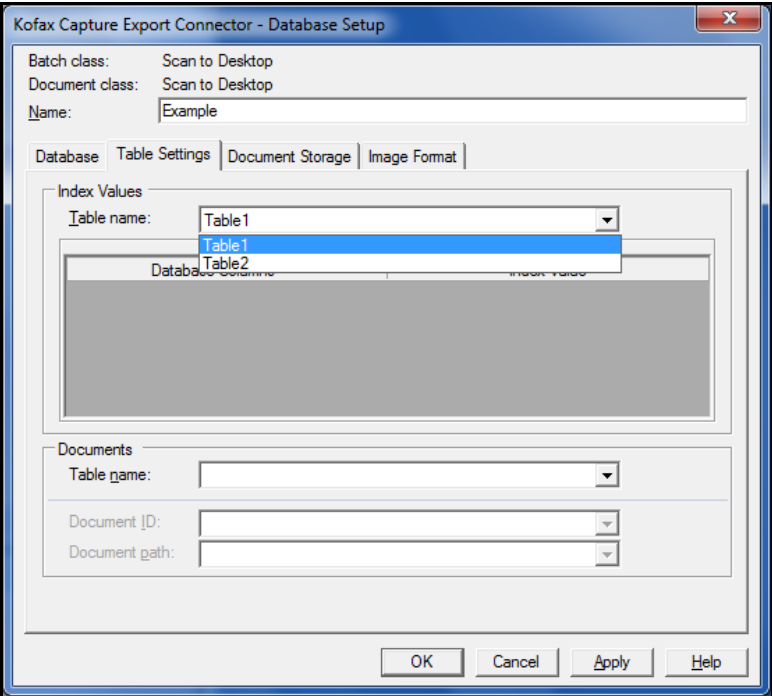
OK Cancel Apply Help

Configuring a Kofax Express 3.1 Database Export Connector

Application Note

- 6. From Index Values section in the Table Settings tab, click the Table name drop list and choose the appropriate table.

The name of the table will then display in the window.

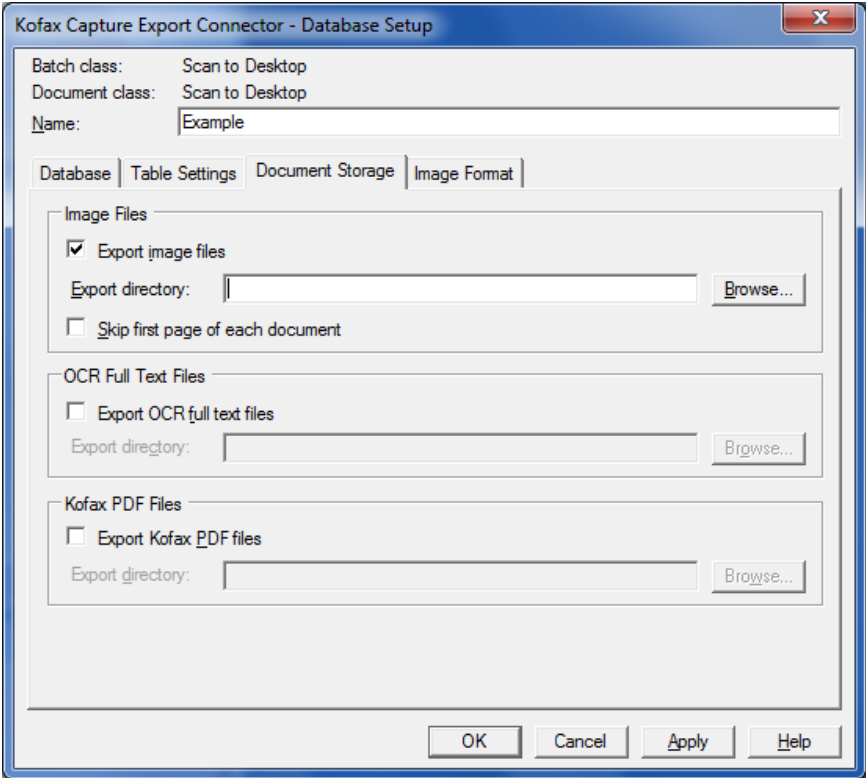


A value may be added for each index field. Although index data is not required, the Document ID is required. To choose the appropriate value, click the box to the right of the desired index value and select the appropriate value. As with the Index Values section, choose the appropriate table from the Table name drop list. Then choose the appropriate choices for Document ID and Document path.

Configuring a Kofax Express 3.1 Database Export Connector

Application Note

- 7. The Export image files box, located on the Document Storage tab, is checked by default. If the image files will be manually exported, manually enter the path to, or browse to the desired Export directory.

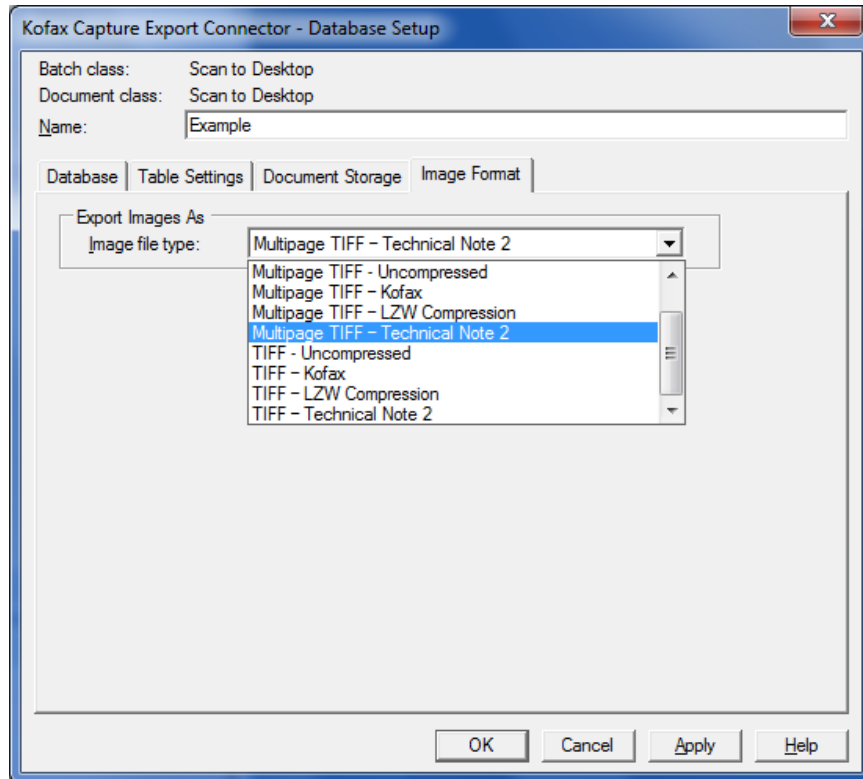


Check the Skip first page of each document box if there are document separator sheets that may be deleted. In a similar manner, OCR full text and PDF files may be selected for export.

Configuring a Kofax Express 3.1 Database Export Connector

Application Note

- Click the Image Format tab and select the desirable Image file type.



- Click Apply and then OK at the bottom of the Database Setup window. At this point use a test batch to try out the new export setup.