

VirtualReScan Administration Utility

Application Note

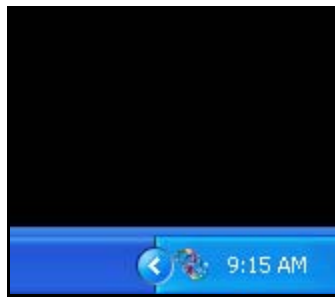
Date	June 17, 2010
Applies To	VirtualReScan (VRS) 4.x
Summary	This application note provides information regarding the use of the VRS 4.x Administration Utility
Revision	1.0

VirtualReScan Administration Utility Overview

This application note serves as a guide to using the features of the VRS Administration Utility found in the VirtualReScan 4.x product.

Accessing the VirtualReScan 4.x Administration Utility

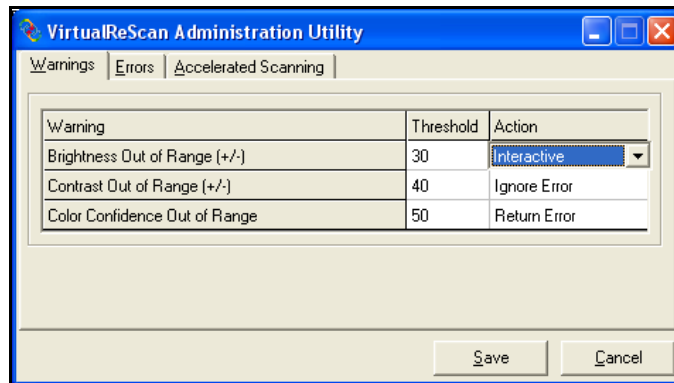
You can access the VRS Administration Utility using any scan application that can load a VRS source. Once the VRS source is loaded the VRS icon will appear in the Windows System Tray.



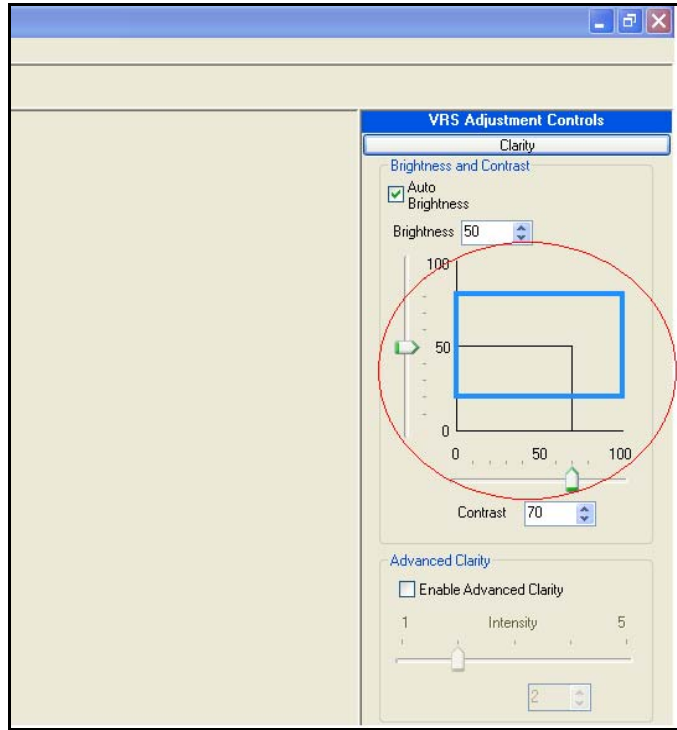
Right click on the VRS icon and click on “Admin Utility...” and the utility will open to the Warnings tab.

Warnings Tab

The Warnings tab contains three threshold values: Brightness Out of Range, Contrast Out of Range and Color Confidence Out of Range. These can be used to control when an image is trapped and the VRS Interactive Viewer is opened. When any of these three values are set to Interactive the image will be trapped in the Interactive Viewer if one or more of the ranges are exceeded. This allows the user to manually bring the value that is out of range to an acceptable range.

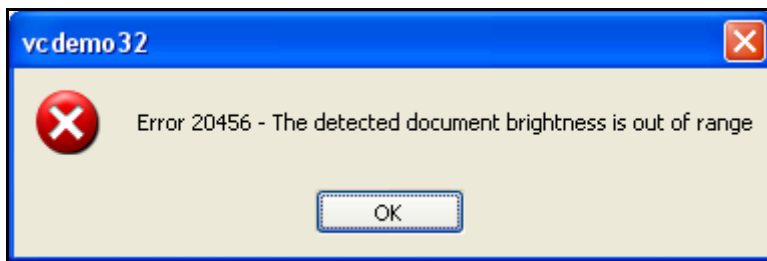


The Brightness and Contrast Out of Range values are depicted by the blue box in the graph under the Clarity settings in the VRS Interactive Viewer:



If the action is set to Ignore Error the threshold will be ignored and scanning will continue.

If the action is set to Return Error and the threshold is exceeded then the following error will be returned:



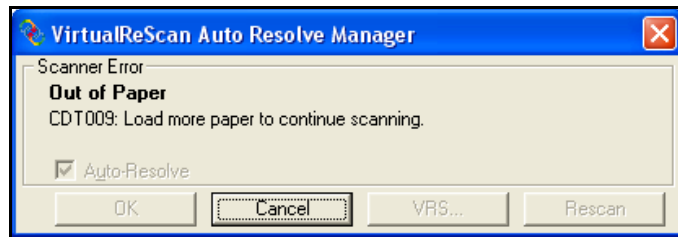
Errors Tab

The Errors Tab manages how VRS will report error conditions coming from the scanner. The first three error conditions, Paper Jam, Out of Paper and Cover Open, allow the user to choose Auto Resolve or Return Error.

Return Error will simply display the scanners original message and scanning will stop. For instance if Out of Paper is set to Return Error this message will appear:



When Auto Resolve is chosen VRS will pause scanning until the error condition is addressed. In the mean time VRS will display an Auto Resolve message:



Once the condition is cleared (more paper is added, a paper jam is cleared, etc.) VRS will initiate scanning without requiring a prompt from the user. If Cancel is chosen on this message however, scanning will once again stop.

Auto Crop Failure and Auto Deskew Failure act similarly to the items on the Warnings tab except they report conditions experienced by VRS rather than the scanner. If VRs cannot determine the edge of the page (Auto Crop Failure) or if it is unable to deskew an image due to an extreme skew or cropped corners (Auto Deskew Failure) VRS will report this condition. Auto Crop Failure and Auto Deskew Failure also have similar actions to the Warnings tab: Ignore Error, Return Error and Interactive, each of which work similarly to the Warnings.

Accelerated Scanning Tab

The Accelerated Scanning tab contains one simple slider (see below). It is used to maximize the efficiency of VRS and the scanner. It does this by allowing the user to decide what balance should be made between image quality and speed. VRS will default to the best image quality possible (the left side of the slider). However if the user determines that the quality is sufficient for their needs the slider may be moved to the right in increments to allow the scanner speed to be accelerated.

