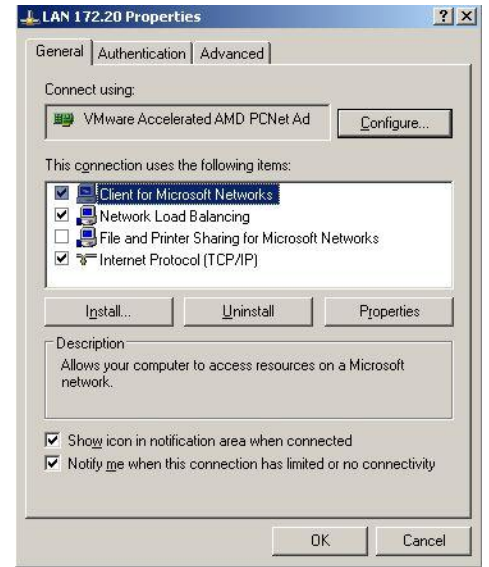
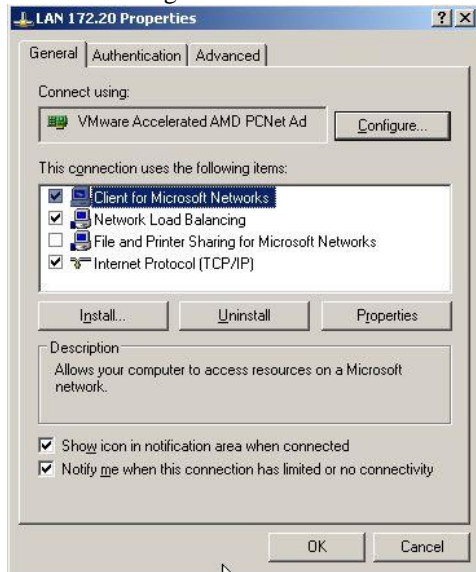


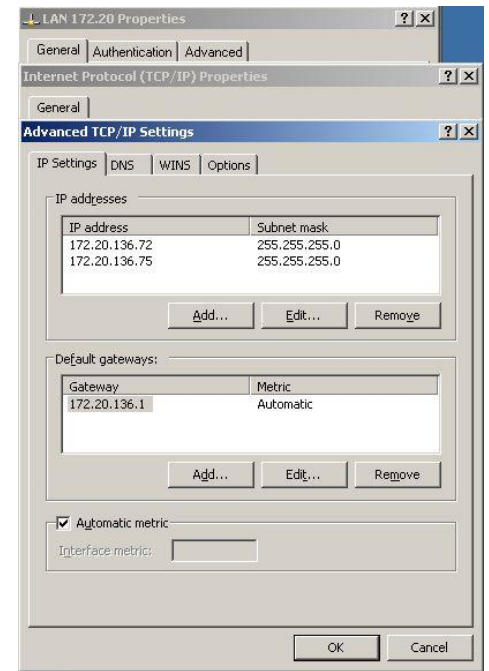
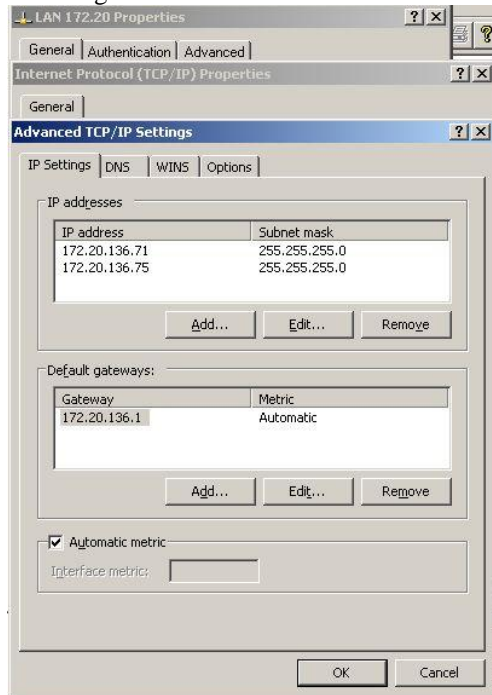
# Server NLB1

# Server NLB2

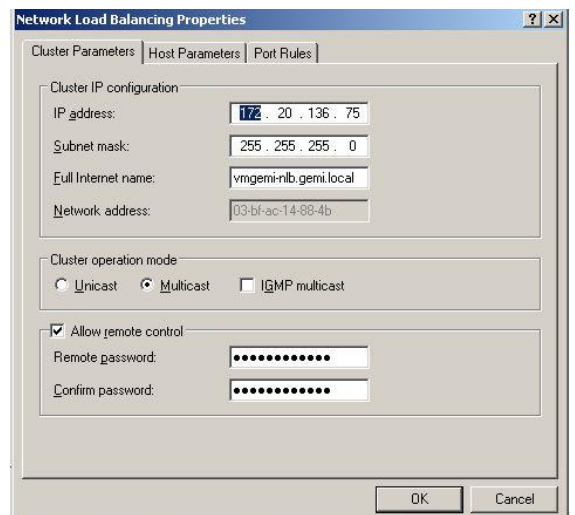
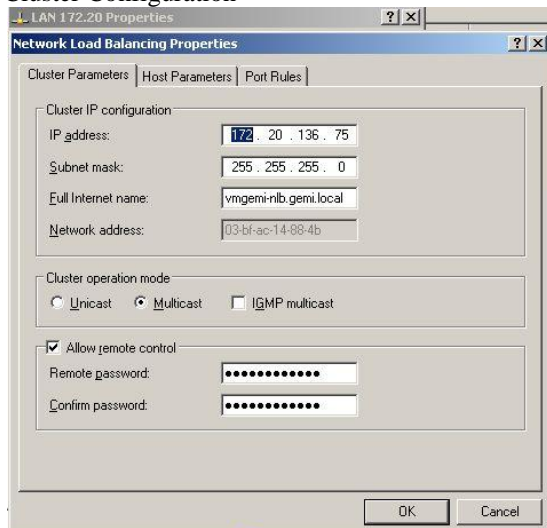
## Network Configuration



## IP Configuration



## Cluster Configuration



## Host Parameters

LAN 172.20 Properties

Network Load Balancing Properties

Cluster Parameters | Host Parameters | Port Rules

Priority (unique host identifier): 1

Dedicated IP configuration

IP address: 172 . 20 . 136 . 71

Subnet mask: 255 . 255 . 255 . 0

Initial host state

Default state: Started

Retain suspended state after computer restarts

OK Cancel

Network Load Balancing Properties

Cluster Parameters | Host Parameters | Port Rules

Priority (unique host identifier): 1

Dedicated IP configuration

IP address: 172 . 20 . 136 . 71

Subnet mask: 255 . 255 . 255 . 0

Initial host state

Default state: Started

Retain suspended state after computer restarts

OK Cancel

## Port Rules

LAN 172.20 Properties

Network Load Balancing Properties

Cluster Parameters | Host Parameters | Port Rules

Defined port rules:

Cluster IP address	Start	End	Prot...	Mode	Priority	Load	Affinity
All	25	25	TCP	Multiple		Equal	None

Add... Edit... Remove

Port rule description

TCP traffic directed to any cluster IP address that arrives on port 25 is balanced equally across all members of the cluster. Client IP addresses and ports are used to assign client connections to a specific cluster host.

OK Cancel

Network Load Balancing Properties

Cluster Parameters | Host Parameters | Port Rules

Defined port rules:

Cluster IP address	Start	End	Prot...	Mode	Priority	Load	Affinity
All	25	25	TCP	Multiple		Equal	None

Add... Edit... Remove

Port rule description

TCP traffic directed to any cluster IP address that arrives on port 25 is balanced equally across all members of the cluster. Client IP addresses and ports are used to assign client connections to a specific cluster host.

OK Cancel

LAN 172.20 Properties

Network Load Balancing Properties

Cluster Parameters | Host Parameters | Port Rules

Add/Edit Port Rule

Cluster IP address

Port range

From: 25 To: 25

Protocols

TCP  UDP  Both

Filtering mode

Multiple host Affinity:  None  Single  Class C

Load weight: 50 or  Equal

Single host Handling priority: 1

Disable this port range

OK Cancel

Add/Edit Port Rule

Cluster IP address

Port range

From: 25 To: 25

Protocols

TCP  UDP  Both

Filtering mode

Multiple host Affinity:  None  Single  Class C

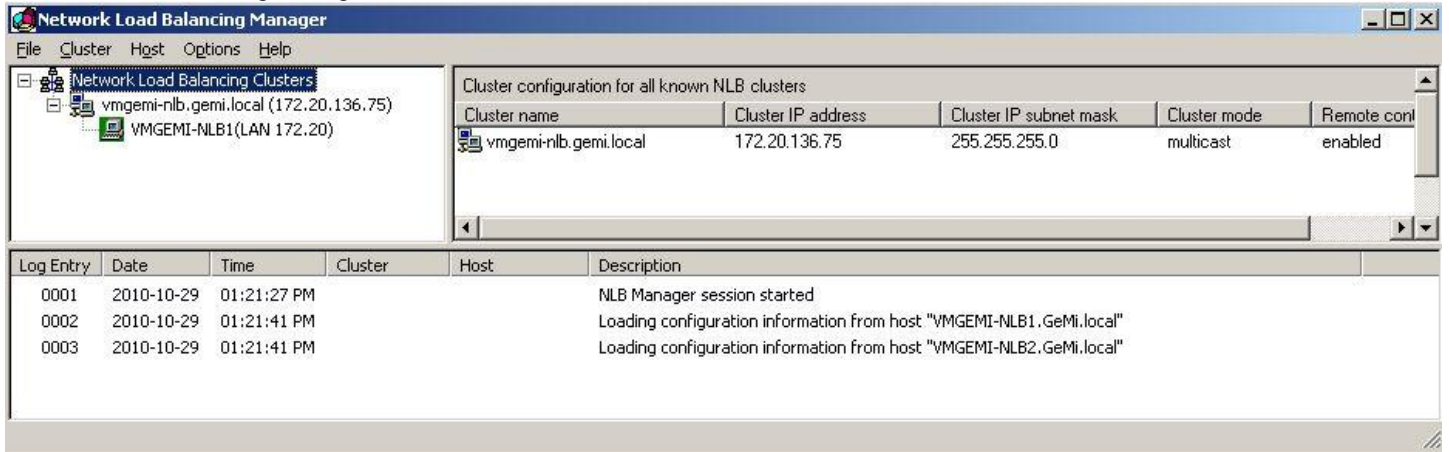
Load weight: 50 or  Equal

Single host Handling priority: 1

Disable this port range

OK Cancel

## Network Load Balancing Manager:

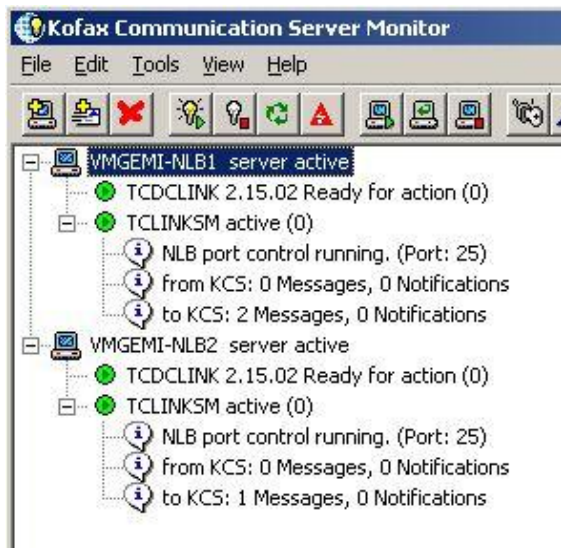


Forget that you can't see both servers

You can connect either to NLB1 or to NLB2

In the Log you can see both – and this is enough

## KCS Monitor:



## Setup with additional NICs without Network Load Balancing

### Sample IPCONFIG /all

```

C:\WINDOWS\system32\cmd.exe
C:\Documents and Settings\Administrator.GEMI>ipconfig /all

Windows IP Configuration

Host Name . . . . . : UMGEMI-NLB1
Primary Dns Suffix . . . . . : Gemi.local
Node Type . . . . . : Unknown
IP Routing Enabled. . . . . : No
WINS Proxy Enabled. . . . . : No
DNS Suffix Search List. . . . . : Gemi.local

Ethernet adapter LAN 172.20:

Connection-specific DNS Suffix . : gemi.local
Description . . . . . : VMware Accelerated AMD PCNet Adapter #2
Physical Address. . . . . : 00-0C-29-6F-54-8C
DHCP Enabled. . . . . : No
IP Address. . . . . : 172.20.136.75
Subnet Mask . . . . . : 255.255.255.0
IP Address. . . . . : 172.20.136.71
Subnet Mask . . . . . : 255.255.255.0
Default Gateway . . . . . : 172.20.136.1
DNS Servers . . . . . : 10.18.129.2

Ethernet adapter Host-Only 192.168.31.x:

Connection-specific DNS Suffix . :
Description . . . . . : VMware Accelerated AMD PCNet Adapter
Physical Address. . . . . : 00-0C-29-6F-54-96
DHCP Enabled. . . . . : No
IP Address. . . . . : 192.168.31.181
Subnet Mask . . . . . : 255.255.255.0
Default Gateway . . . . . :
DNS Servers . . . . . : 10.18.129.2

Ethernet adapter LAN-2 172.20:

Connection-specific DNS Suffix . :
Description . . . . . : VMware Accelerated AMD PCNet Adapter
Physical Address. . . . . : 00-0C-29-6F-54-A0
DHCP Enabled. . . . . : No
IP Address. . . . . : 172.20.136.171
Subnet Mask . . . . . : 255.255.255.0
Default Gateway . . . . . :
DNS Servers . . . . . :
C:\Documents and Settings\Administrator.GEMI>
    
```

```

C:\WINDOWS\system32\cmd.exe
C:\Documents and Settings\Administrator.GEMI>ipconfig /all

Windows IP Configuration

Host Name . . . . . : UMGEMI-NLB2
Primary Dns Suffix . . . . . : Gemi.local
Node Type . . . . . : Unknown
IP Routing Enabled. . . . . : No
WINS Proxy Enabled. . . . . : No
DNS Suffix Search List. . . . . : Gemi.local

Ethernet adapter LAN 172.20:

Connection-specific DNS Suffix . : gemi.local
Description . . . . . : VMware Accelerated AMD PCNet Adapter #2
Physical Address. . . . . : 00-0C-29-D9-38-BF
DHCP Enabled. . . . . : No
IP Address. . . . . : 172.20.136.75
Subnet Mask . . . . . : 255.255.255.0
IP Address. . . . . : 172.20.136.72
Subnet Mask . . . . . : 255.255.255.0
Default Gateway . . . . . : 172.20.136.1
DNS Servers . . . . . : 10.18.129.2

Ethernet adapter Host-Only 192.168.31.x:

Connection-specific DNS Suffix . :
Description . . . . . : VMware Accelerated AMD PCNet Adapter
Physical Address. . . . . : 00-0C-29-D9-38-C9
DHCP Enabled. . . . . : No
IP Address. . . . . : 192.168.31.182
Subnet Mask . . . . . : 255.255.255.0
Default Gateway . . . . . :
DNS Servers . . . . . : 10.18.129.2

Ethernet adapter LAN-2 172.20:

Connection-specific DNS Suffix . :
Description . . . . . : VMware Accelerated AMD PCNet Adapter
Physical Address. . . . . : 00-0C-29-D9-38-D3
DHCP Enabled. . . . . : No
IP Address. . . . . : 172.20.136.172
Subnet Mask . . . . . : 255.255.255.0
Default Gateway . . . . . :
DNS Servers . . . . . :
C:\Documents and Settings\Administrator.GEMI>
    
```

## Screenshot of KCS Monitor with 1 NIC in NLB-Cluster and two additional NICs without clustering

