

# Configuring Kofax Express 3.1 to use Kofax Capture Export Connectors

---

---

## *Application Note*

<b>Date</b>	March 1, 2013
<b>Applies To</b>	Kofax Express 3.1
<b>Summary</b>	This application note provides instruction on how to configure Kofax Capture Export Connectors within the Kofax Express 3.1 application.
<b>Revision</b>	1.0

---

## **Kofax Express 3.1 Kofax Capture Export Connectors**

Newly added to Kofax Express 3.1 is the ability to use Kofax Capture Export Connectors. Kofax Express customers now have the ability to download Kofax Capture Export Connectors previously limited to Kofax Capture customers. This application note provides instructions on how to configure Kofax Capture Export Connectors for use with the Kofax Express 3.1 product.

### **Supported Database Connectors**

Kofax Express 3.1 is able to utilize all Kofax Capture supported Export Connectors, a list of which can be found on the Express worksheet of the [Kofax Cross Product Compatibility Matrix](#). In addition to these new Export Connectors, the Export Connectors originally supported by Kofax Express (Multipage, SharePoint, etc.) are still supported in Kofax Express 3.1.

---

## **Configuring Kofax Capture Export Connectors**

This section is intended as a general guide to installing and configuring a Kofax Capture Export Connector to work with Kofax Express 3.1. The example used in this application note is the Kofax Export Connector 8.2 for IBM FileNet Content Manager for the IBM Content Manager 5.0 product. Each proprietary Export Connector will have a similar installation and configuration procedure; however the actual setup windows may differ.

All supported connectors will be available for download on the [delivery.kofax.com](http://delivery.kofax.com) site. The Kofax Express serial number should be used to access content on the delivery site.

### ***Installing the Export Connector***

The implementation of the Export Connectors was designed to be as similar to Kofax Capture as possible. This document assumes that the FileNet Content Manager 5.0 server is already installed and accessible. Once the FileNet server is installed, follow the Export Connector's Installation or Administrator's Guide to install the connector. The installation instructions for the IBM FileNet Content Manager Export Connector can be found on page 20 of the [Kofax Capture 8.0 Release Script for FileNet Content Manager 5.0 Administrator's Guide](#).

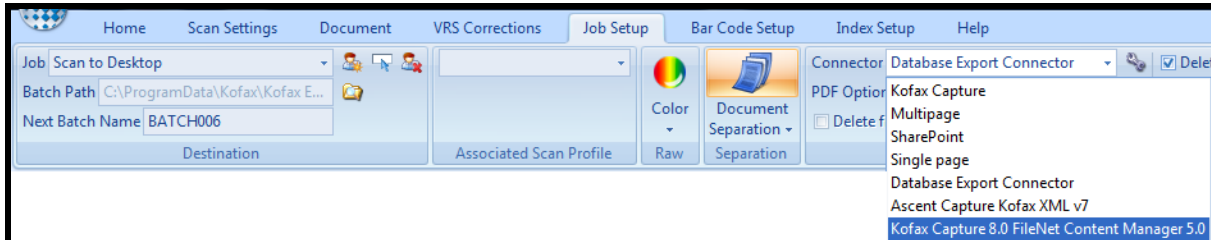
**Note:** If an earlier version of the FileNet Export Connector exists on the PC, it will need to be uninstalled before the later version is installed. See [Kofax Knowledge Base article 15319](#) for details.

## Configuring Kofax Express 3.1 to use Kofax Capture Export Connectors

*Application Note*

### Export Connector Setup

As the connector is installed it is automatically registered with Kofax Express. This means that it should be visible in the Job Setup tab in the Connector dropdown immediately after the connector is installed:

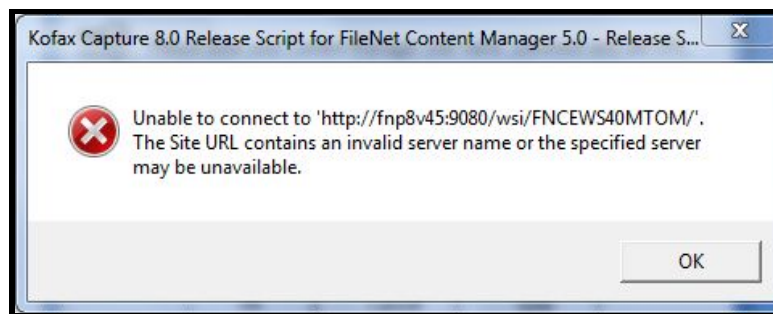


1. Click the wrench to the right of the Connector name. This will open a dialogue box requesting the login information for the database.
2. Fill out the requested information.

**NOTE:** Kofax Express can prompt for login information if it is unable to connect to the backend database during export. To enable this prompt, check the box under the Site URL labeled "If unable to log in during release, prompt for valid login information".



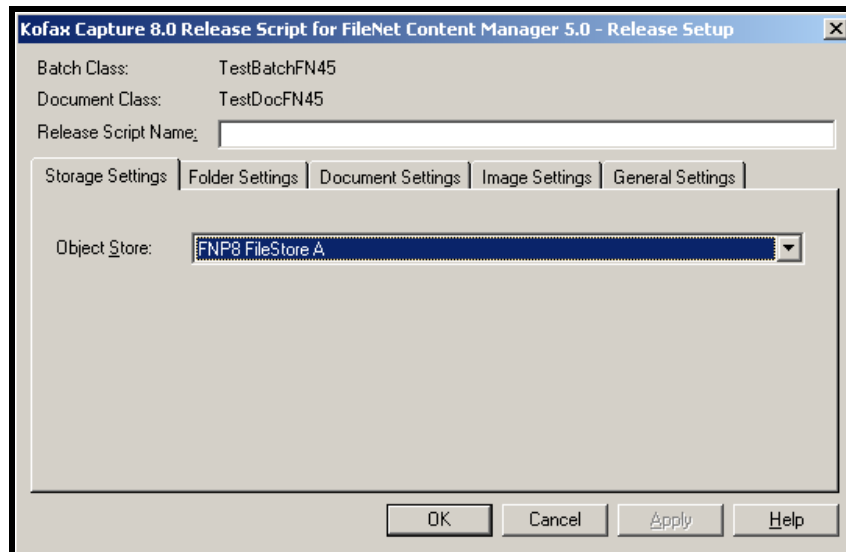
**NOTE:** If incorrect information is entered, or the site is otherwise unavailable, the following error will occur. If this error occurs, verify the user name, password and URL are correct. If they are correct, log into the back end system to verify that it is also accessible.



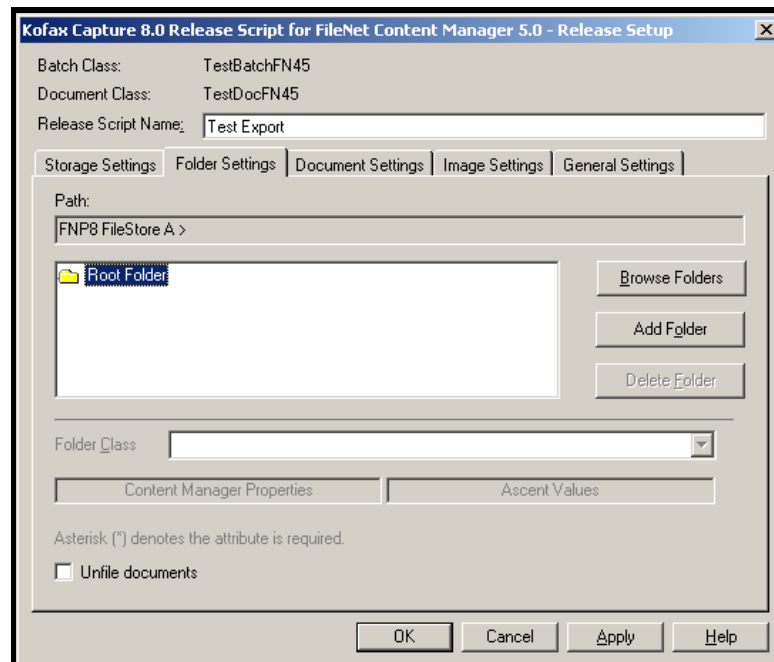
## Configuring Kofax Express 3.1 to use Kofax Capture Export Connectors

*Application Note*

- Once the login information has been accepted, click the wrench icon next to it to access the Database Setup window. This will open the Database Setup window.
- Type a name for the script in the Release Script Name field.
- Click the Object Store dropdown and choose the proper store.



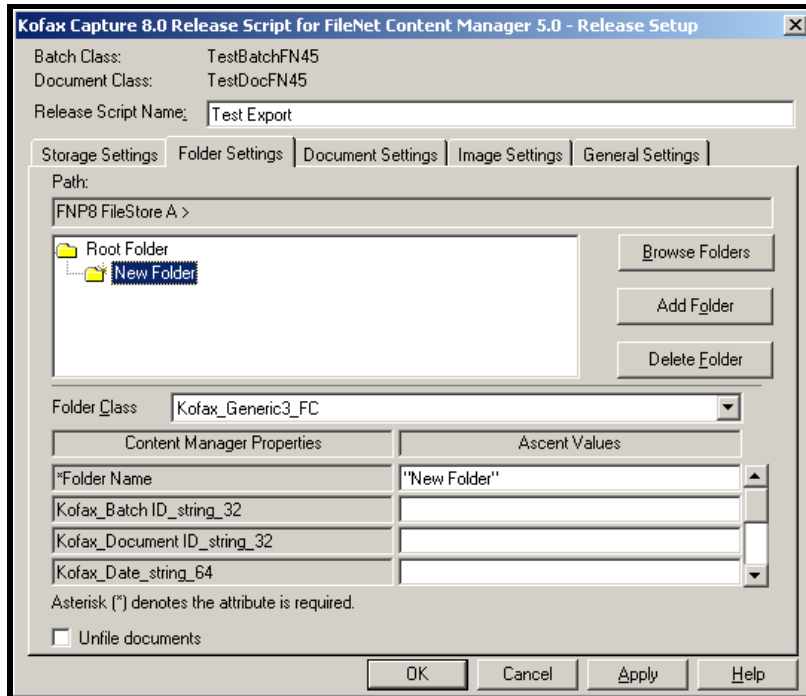
- Click on the Folder Settings tab. The path field should default to the root folder of the filestore previously selected.
- Click Browse Folders to select the appropriate folder.



## Configuring Kofax Express 3.1 to use Kofax Capture Export Connectors

*Application Note*

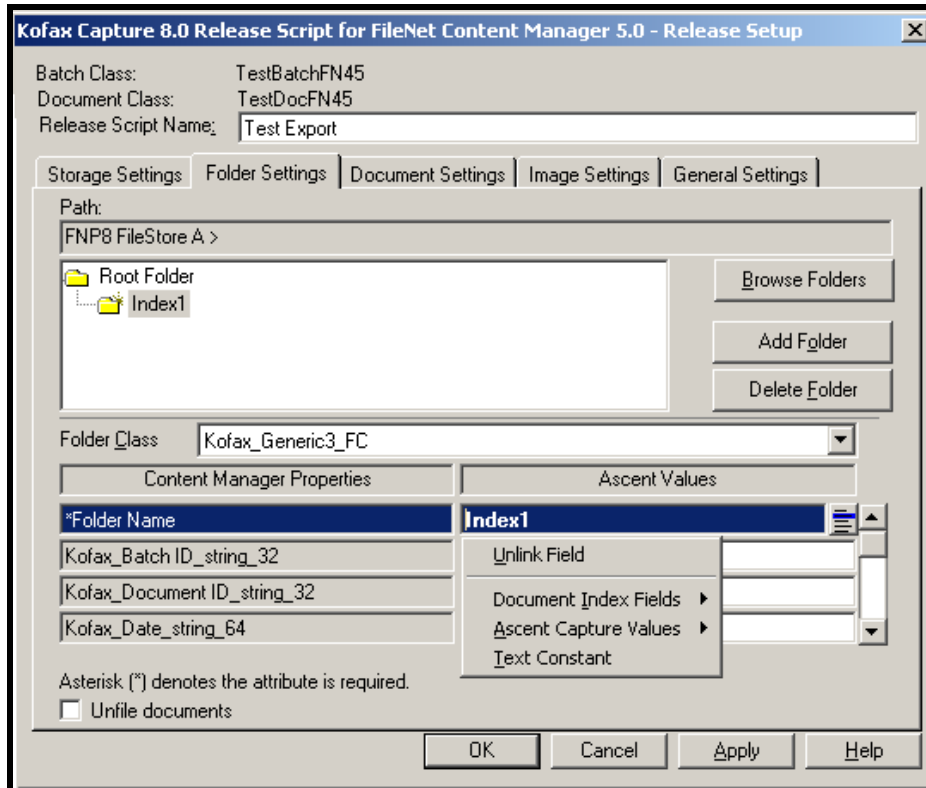
8. Use Add Folder to create a new folder. A subfolder may also be created using the same button. Similarly, Delete Folder can remove any unneeded folders.
9. Once the folder is created, click on it. This will make the Folder Class field available.



## Configuring Kofax Express 3.1 to use Kofax Capture Export Connectors

*Application Note*

10. Click on the dropdown for it and select the proper class.
11. Click on the "New Folder" field in the Ascent Values column to rename the field. Do the same for each of the fields in the Ascent Values column to reveal the menu button within the field. Use the menu button to select values for each of the desired fields.



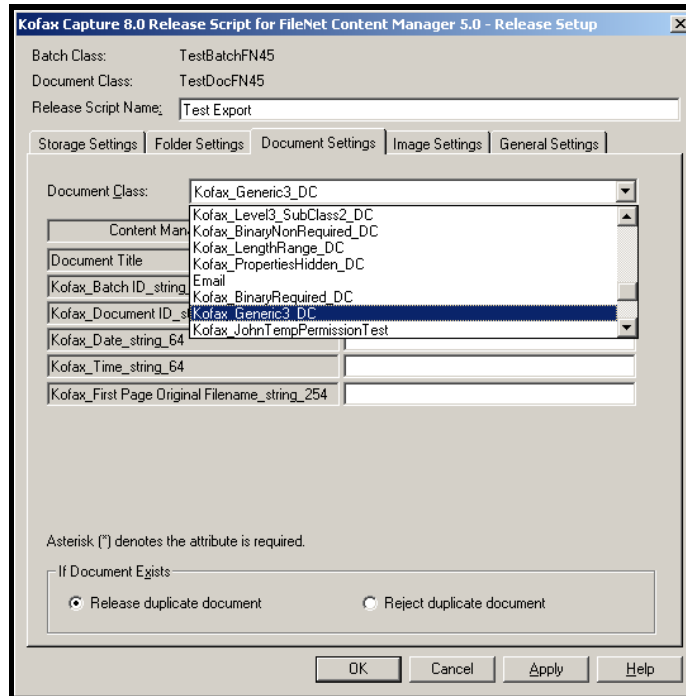
**NOTE:** The following error will occur if a field with an asterisk is not populated and the Apply or OK button is clicked.



## Configuring Kofax Express 3.1 to use Kofax Capture Export Connectors

*Application Note*

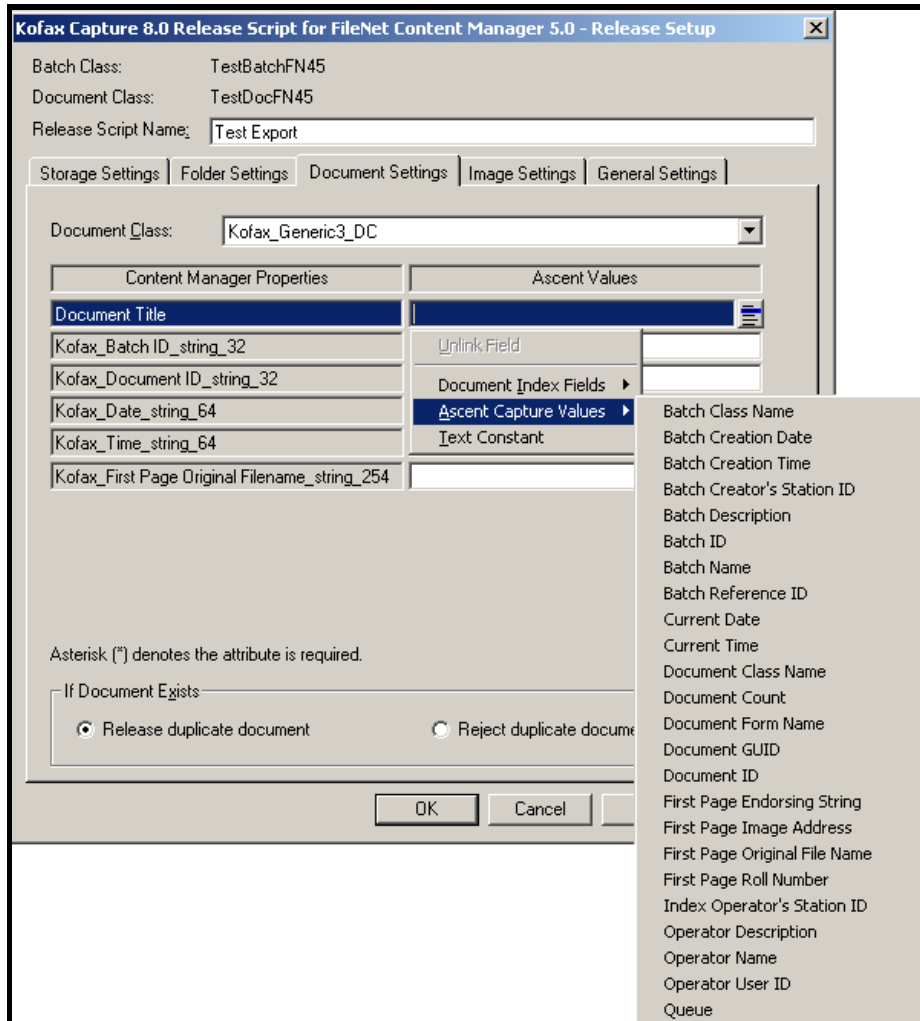
12. Click on the Document Settings tab and then the Document Class dropdown.
13. Choose the appropriate class from the list.



## Configuring Kofax Express 3.1 to use Kofax Capture Export Connectors

*Application Note*

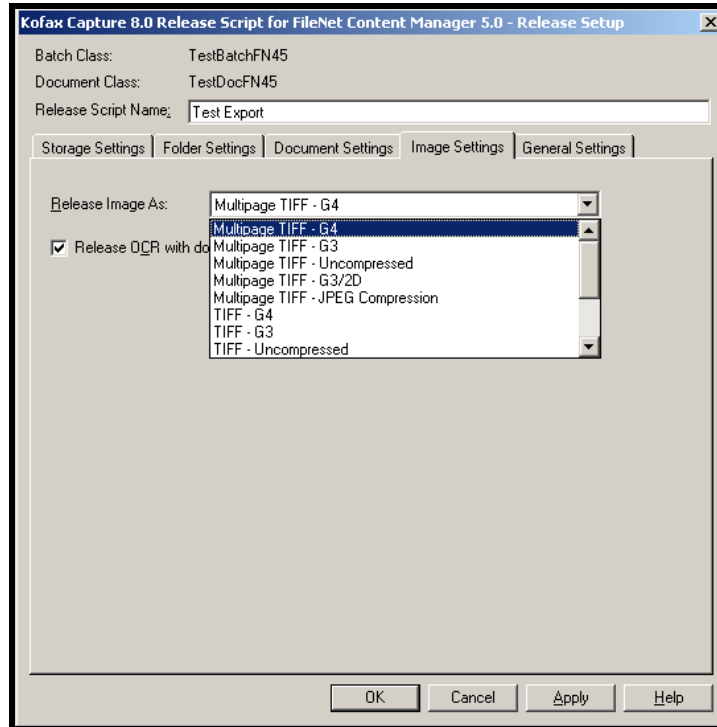
**NOTE:** As in the Folder Settings tab, the Content Manager Properties will automatically populate and the appropriate values may be selected from the menu when clicking on each Ascent Capture Value. Notice that at the bottom of the Document Settings window, radio buttons allow the user to select the behavior of release if the document already exists or not.



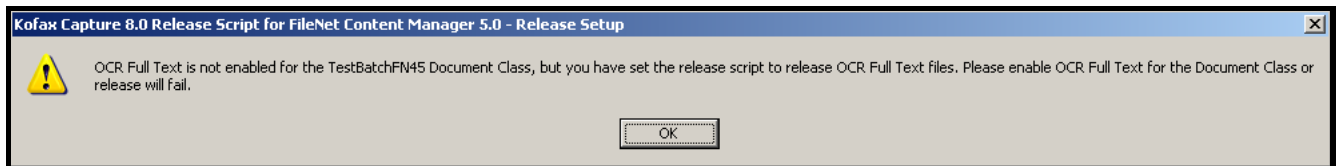
## Configuring Kofax Express 3.1 to use Kofax Capture Export Connectors

*Application Note*

14. Select the image file type from the Image Settings tab's Release Image As dropdown list. The defaulted type is "Multipage TIFF – G4."



**NOTE:** If a searchable document is required, check the Release OCR with document checkbox. OCR Full Text must be enabled in the Document Class or the following error will occur when applying the export setup properties:



Additionally, if PDF is the required format, a PDF format will need to be selected in Kofax Express under Job Setup > Export. This is done in the same manner as with other, non-Kofax Capture, Export Connectors. The PDF properties can then be accessed using the wrench icon in Kofax Express.



## Configuring Kofax Express 3.1 to use Kofax Capture Export Connectors

*Application Note*

- Click the Browse button on the General Settings tab to select the Release working directory.

**NOTE:** The first page of each document may be skipped during export, by checking the “Skip first page of each document” box located below the Release working directory field. A character may also be selected for use as a Multi-value separator if desired.

