

Output Manager Multi destination routing.

Contents

| | | |
|-----------|---|---|
| 1. | Version Management | 2 |
| 2. | Document Summary | 2 |
| 3. | Disclaimer | 2 |
| 4. | General Information on multi destination routing | 3 |
| 5. | How to setup multi destination routing in OM | 4 |

1. Version Management

| Date | Version | Author | Comments |
|------------|---------|----------|----------|
| 24-02-2017 | 1.0 | Nik Pugh | |

2. Document Summary

This TechTip provides instructions on how to setup multi destination routing in Output Manager with simple step-by-step instructions.

3. Disclaimer

Although the greatest care has been taken in the preparation and compilation of this document, no liability or responsibility of any kind (to extent permitted by law), including responsibility for negligence is accepted by the Nuance, its servants or agents. All information gathered is believed correct at the time of publishing.

© Nuance Communications, Inc. All rights reserved.

4. General Information on multi destination routing

A traditional print setup will send a print job to a single destination, such as a FollowYou print queue.

Frequently customers are looking for the possibility to do more with a print job than just printing it. With Output Manager you have the possibility of taking a single input and routing that to two or more destinations. This can be useful when you want to create an archive of all print jobs send.

You can also use Output Manager in combination with Equitrac or SafeCom and use Output Manager to do a multi destination and create an archive of print jobs and also send them through to Equitrac or SafeCom.

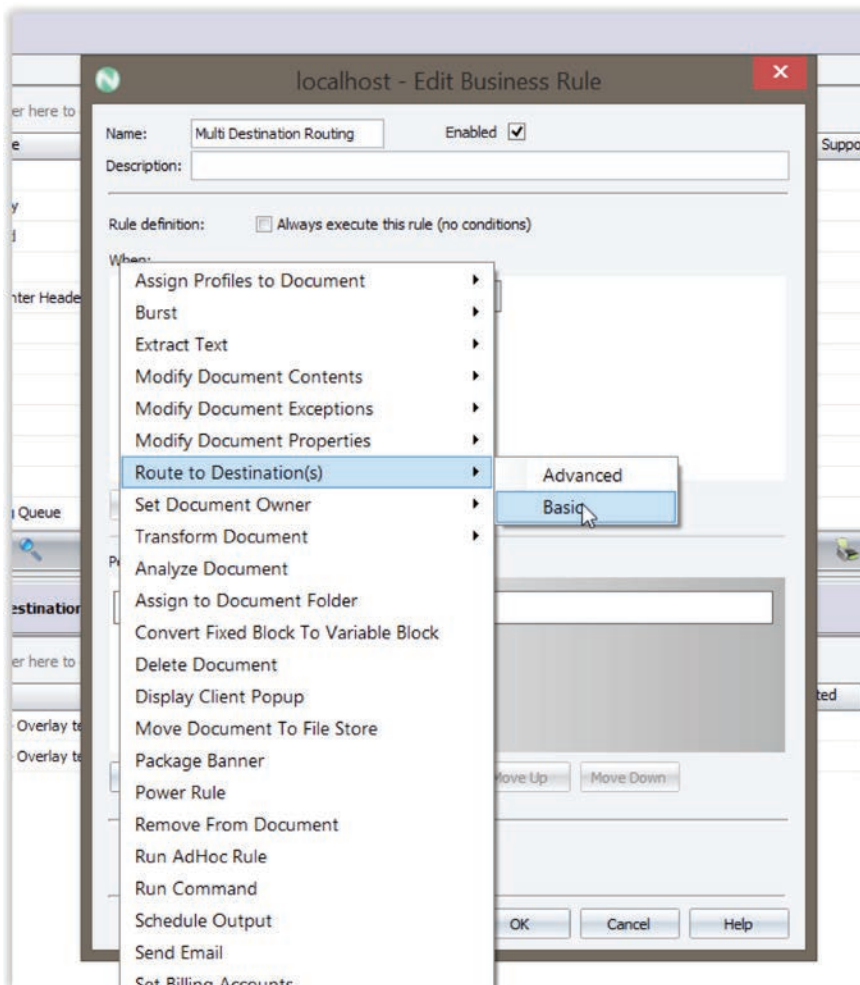
5. How to setup multi destination routing in OM

A typical user scenario maybe that you want all Postscript print jobs sent to Output Manager to be archived to SharePoint (sent via AutoStore) in PDF format, but that you still want them to be printed from Output Manager.

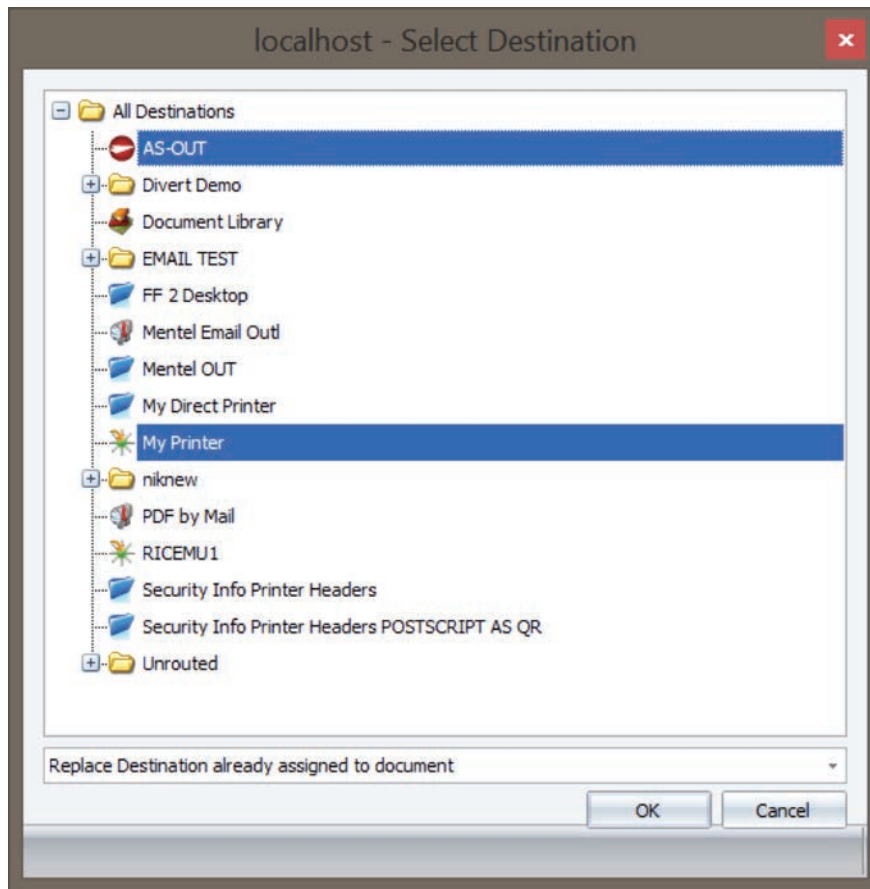
To set this up, two simple business rules are needed. Please ensure that you have already created your printer and AutoStore destination in OM before you begin.

In the Output Manager console go to “tools” and then “business rules” and then create a new rule. Give it a meaningful name, for example “multi-destination routing” and pick a suitable condition.

In this example we are using a windows queue source which is using the OM UPPD driver (PostScript). Then the action needed is “route to destination” and then the “Basic” option.



Click and hold the “control” key at the same time to pick multiple destinations, in this example these are Autostore and “My Printer”.



The rule that has been created will look like this:

localhost - Edit Business Rule

Name: Multi Destination Routing Enabled

Description:

Rule definition: Always execute this rule (no conditions)

When:

Document.Source Is Equal To UPPD-OM

Add Condition Remove Condition Add Group Remove Group

Perform the following actions:

Route to the following destination(s): AS-OUT, My Printer
Replace Destination already assigned to document

Add Action Modify Action Remove Action Move Up Move Down

Follow-on Action:
Continue processing rules

OK Cancel Help

To be able to transform the files to PDF that are going to be sent to SharePoint (via Autostore) we need a second Business Rule which will look like the example below.

localhost - Edit Business Rule

Name: Transform for AS Enabled

Description: transforms PS print files to pass to AS 9and then AS to Sharepoint)

Rule definition: Always execute this rule (no conditions)

When:

- Document.Destination.Name Is Equal To AS-OUT
- AND Document.Property.Data Type Is Equal To PS

Add Condition Remove Condition Add Group Remove Group

Perform the following actions:

Perform Document Transform

Add Action Modify Action Remove Action Move Up Move Down

Follow-on Action:

Continue processing rules

OK Cancel Help

The document transform option action configuration show be set like this:

localhost - Configure Transform

Server configuration:

Server: UK_NIKP

Transform package: UK_NIKP Transform Package

Format configuration:

Override input filter profile assigned to document.

Output format: PDF

Input formats:

| Format | Configuration | Modify/New |
|--------|---------------------|------------|
| BMP | Do Not Transform | ... |
| GIF | Do Not Transform | ... |
| IOCA | Do Not Transform | ... |
| JPEG | Do Not Transform | ... |
| PCL5 | Do Not Transform | ... |
| PCL6 | Do Not Transform | ... |
| PCX | Do Not Transform | ... |
| PDF | Do Not Transform | ... |
| PNG | Do Not Transform | ... |
| PS | Use Default Options | ... |
| TGA | Do Not Transform | ... |
| TIF | Do Not Transform | ... |
| TXT | Do Not Transform | ... |
| XFF | Do Not Transform | ... |
| XPS | Do Not Transform | ... |

Follow on actions:

Input document: Retain

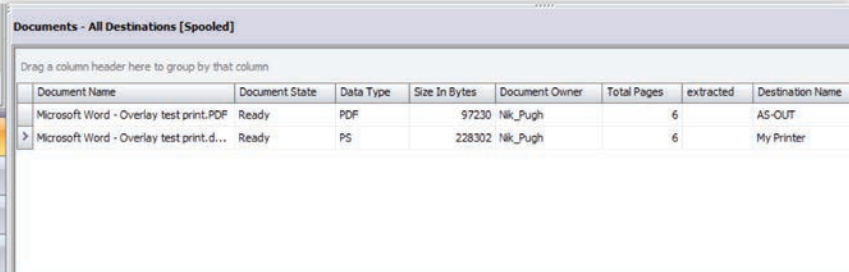
Output document will continue processing actions in current rule.

OK Cancel Help

Last step is to test the Business Rules by printing a job into OM.

At first one job will appear, and then it will become two jobs, each with a different destination (AS-OUT and My Printer) as seen in my screenshot below.

The file going to AutoStore should show as being in PDF format.



| Document Name | Document State | Data Type | Size In Bytes | Document Owner | Total Pages | extracted | Destination Name |
|--|----------------|-----------|---------------|----------------|-------------|-----------|------------------|
| Microsoft Word - Overlay test print.PDF | Ready | PDF | 97230 | Nik_Pugh | 6 | | AS-OUT |
| Microsoft Word - Overlay test print.d... | Ready | PS | 228302 | Nik_Pugh | 6 | | My Printer |

About Nuance Communications, Inc.

Nuance Communications is reinventing the relationship between people and technology. Through its voice and language offerings, the company is creating a more human conversation with the many systems, devices, electronics, apps and services around us. Every day, millions of people and thousands of businesses experience Nuance through intelligent systems that can listen, understand, learn and adapt to your life and your work. For more information, please visit nuance.com.
