



Adaptive OfficeConnect Release Notes

38%

Copyright 2004 - 2015, Adaptive Insights, Inc. All rights reserved. This work contains trade secrets and confidential material of Adaptive Insights and its use or disclosure in whole or in part without the express written permission of Adaptive Insights is prohibited.

v.2015

Adaptive OfficeConnect Release Notes

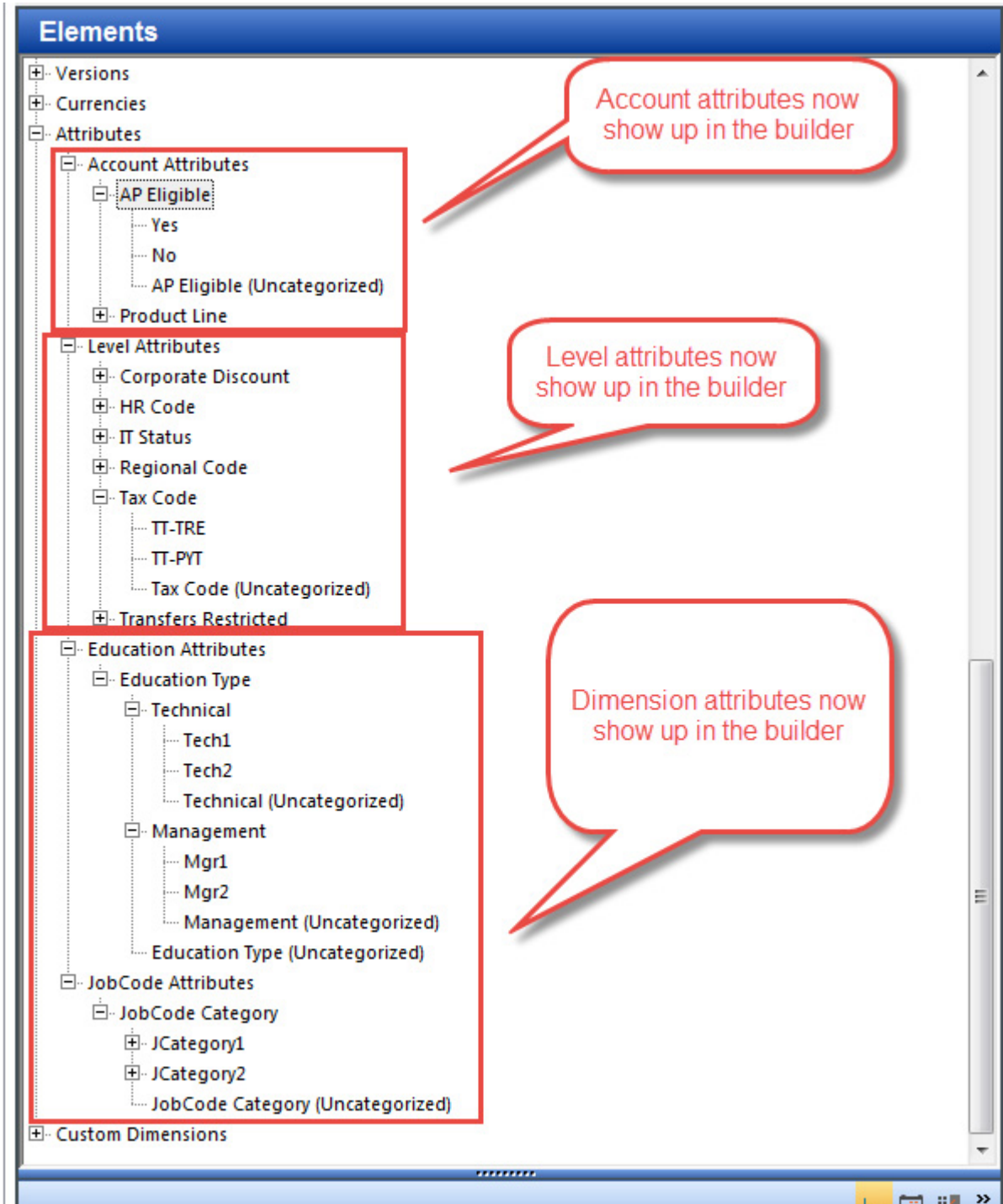
The new Adaptive OfficeConnect release debuted on December 11, 2015. It offers these new features for OfficeConnect:

- Attribute support
- Quarter to Date (QTD) context
- Multi-currency support
- Online Help

For details on each of these, see below.

Attributes Support

Account, level, and dimension attributes are now available for use in OfficeConnect reports. To add attributes to a report, drag and drop them from the Elements list the same way you do with any other element.

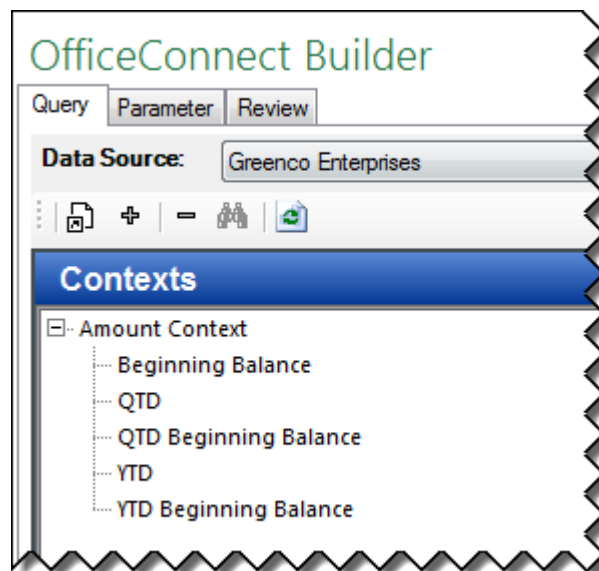


Quarter to Date Context

You can now use quarter to date (QTD) as a context when creating reports in OfficeConnect. Both relative calendar and fixed calendar can be used with the QTD context.

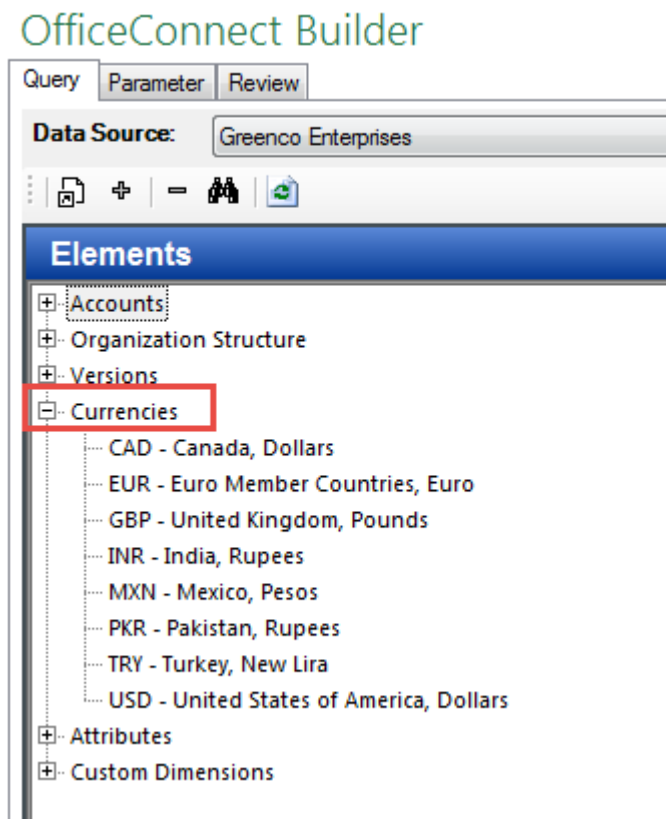
For example, a report dated February 2015 might have a column displaying the relative calendar of QTD as of February. When the report date is updated, the time period changes to match the new date.

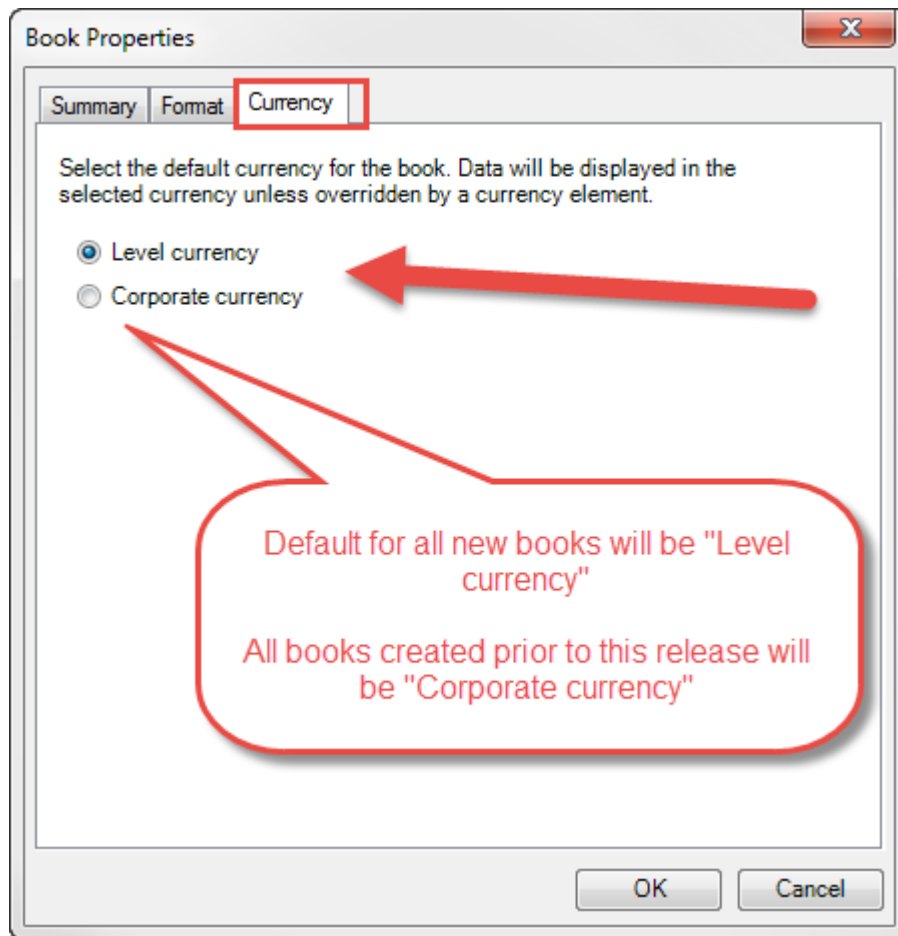
If you do not want the QTD column to update, apply a fixed calendar to the column, then apply the QTD context. In the same example as above, applying a fixed calendar of QTD as of February means that as the report date is updated, the time period does not change, and the column still displays QTD as of February 2015.



Multi-Currency

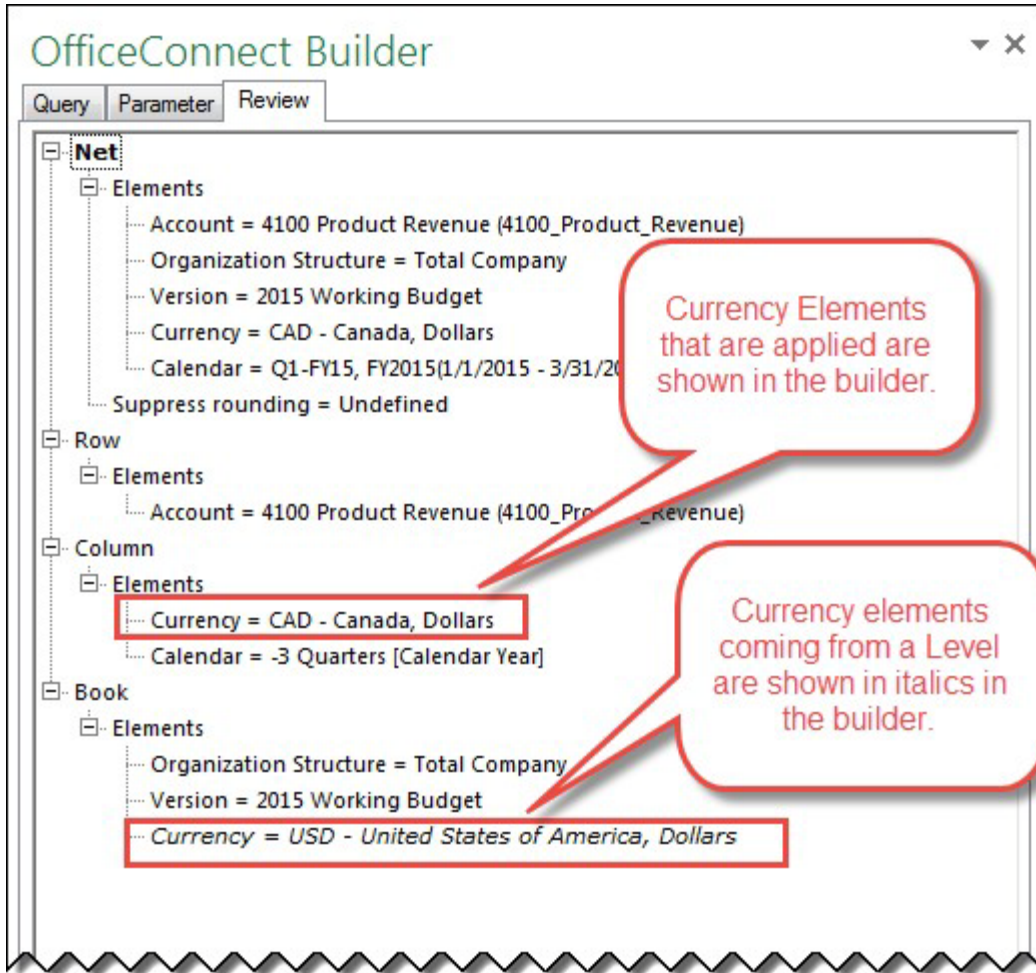
OfficeConnect now supports querying and retrieving data in currencies other than the corporate currency. You can change an entire report or book to a different currency, display levels in their associated currency, and view currency translation impact by viewing the same report in both local and corporate currency.





Adaptive OfficeConnect displays currency differently in the review pane depending on whether it is a currency element applied from the builder or the default currency associated with the level. Currency elements are applied from the builder and removed like any

other element. Currency that is connected to a level (default) appears in italics in the review pane and changes based upon the level a user has access to or the level applied.



Online Help

Adaptive OfficeConnect now has online help of the same type as other Adaptive Suite products.

To open the help, Go to OfficeConnect > Help > Online Help as shown below, or go directly to this URL: <http://aochelp.adaptiveplanning.com/aochelp/latest/help/index.htm>. The online help includes information on getting started, creating reports, refining information, formatting, and other tasks.

