

PlanMaryland

Maryland Department of Planning



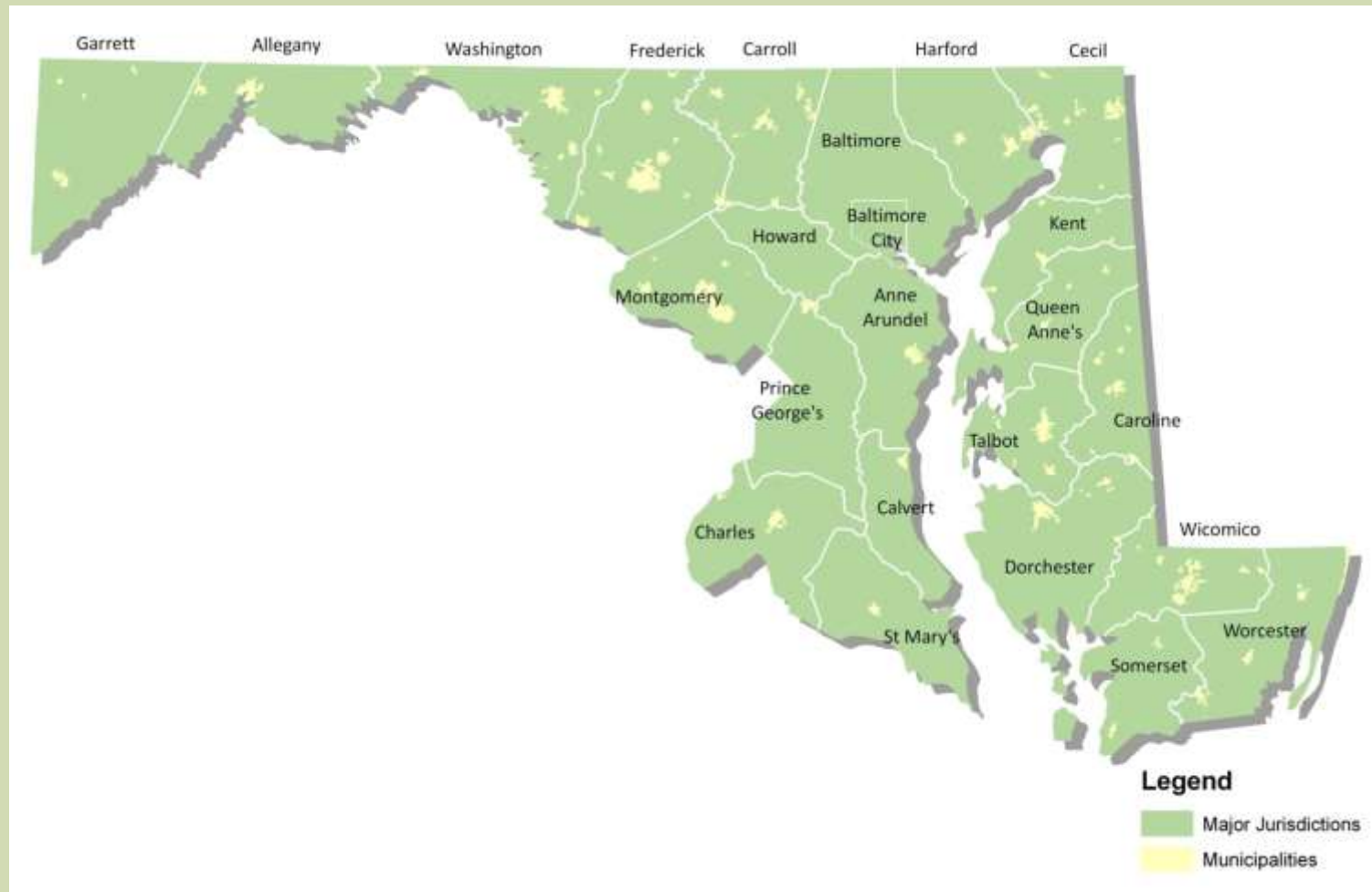
8th Mid-Atlantic Regional Planning Roundtable

Arlington, VA

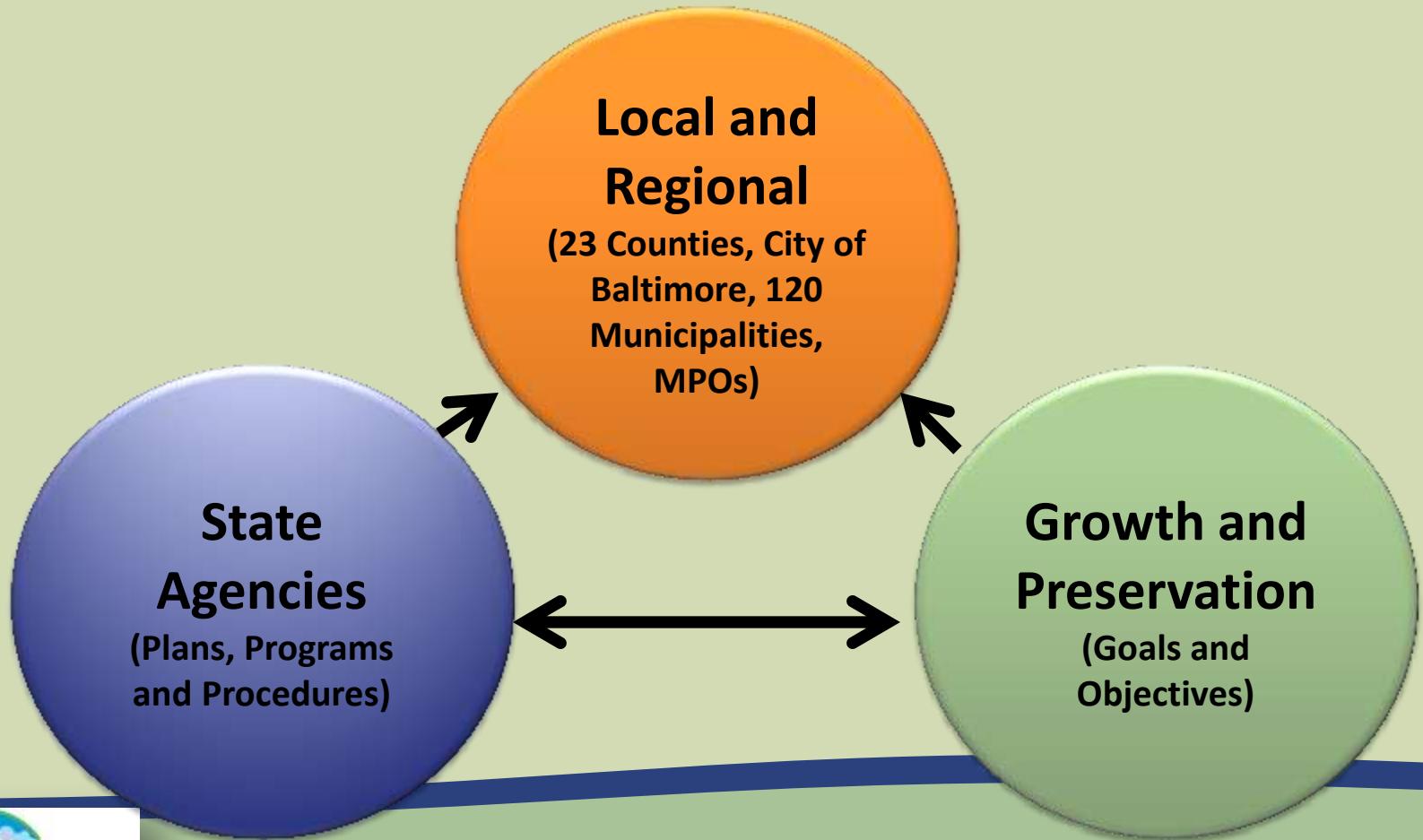
March 30, 2012



Planning – Land Use Authority in Maryland



**PlanMaryland Interrelationships:
Connecting State Agency Plans, Programs and Procedures
to Local Governments/Regional Entities to achieve Growth and Preservation
Goals and Objectives**



PlanMaryland

- Informs choices for the future
- Provides a smart growth strategy for Maryland that protects our Bays and keeps our communities vibrant
- Enhances long-term economic development and job creation
- Leads to more efficient use of tax dollars for infrastructure, other public services, and programs
- Provides a structure to coordinate State agencies with local governments



The Big Picture

By 2035:

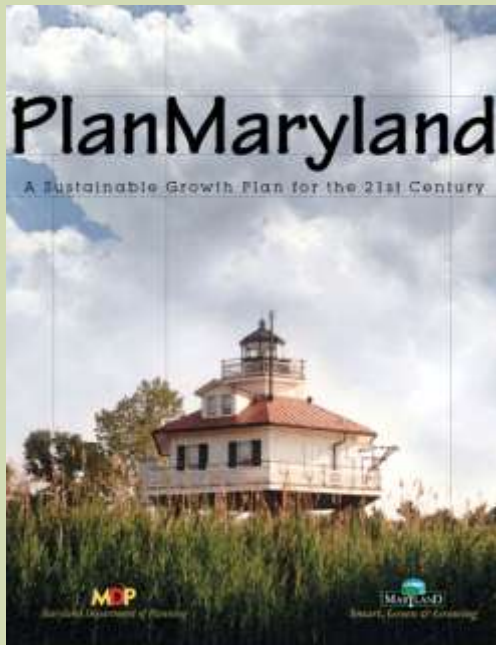
1,000,000 new residents

500,000 new homes

600,000 new jobs



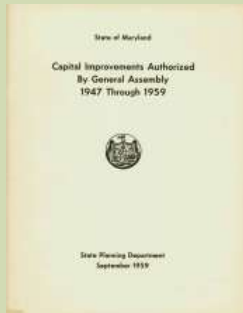
PlanMaryland Is



- A Plan to direct State and local efforts to achieve sustainable growth and development
- A Plan to stimulate economic development and revitalization in towns, cities and other existing communities that have existing or planned facilities to support growth
- A Plan to improve collaboration/coordination between state agencies and local governments



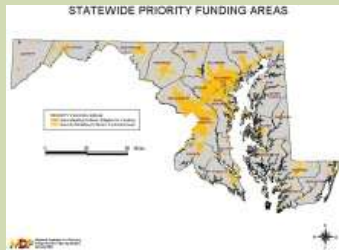
Road to a State Growth Plan



Maryland Department of Planning (MDP) required since 1959 *by state law* to prepare state development plan

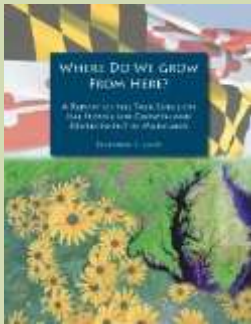


1974 Land Use Act reaffirmed requirement that MDP create a state plan



1997 Priority Funding Areas act established concept of geographic focus to target state funds to promote growth in areas served by planned or existing infrastructure.

Road to a State Growth Plan



General Assembly in 2007 and 2010 charged Growth Task Force and then the Sustainable Growth Commission with advising MDP on preparation and content of state development plan



2009 Smart, Green, and Growing Legislation created 12 Planning Visions as heart of PlanMaryland. Legislature required local governments to incorporate 12 visions in comprehensive plans and to ensure that there be consistency between implementing ordinances and plans



Land Use Trends and Implications

Land conversion since 1970 was double the rate of housing and triple the rate of population

Road, sewer/water and school construction over the next 25 years will need \$29 billion more - much of that local cost

Over 15,000 new miles of roads will need to be constructed at a cost of \$110 billion to support these current trends

Water quality in the Chesapeake and Coastal Bays impacted by 120,000 individual on-site septic systems

Vehicle Miles Traveled (VMT) are projected to increase from 56 billion to almost 84 billion miles per year by 2035



Land Use Trends and Implications

Since 1997, 75% of developed acres has occurred outside the Priority Funding Areas

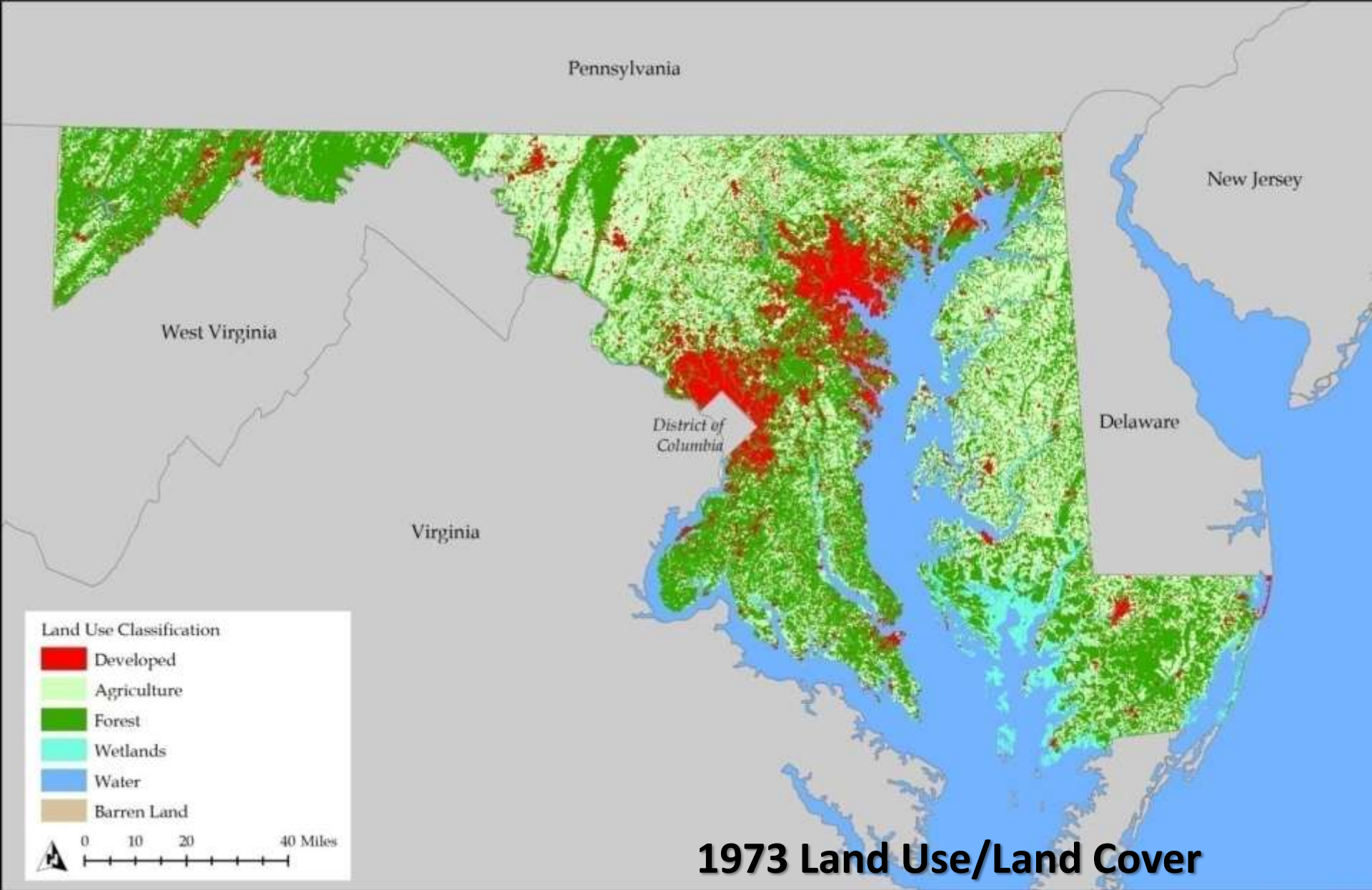
Maryland will lose another 226,000 acres of farmland and 176,000 acres of forested land by 2035 at current trends

Over the next 25 years, new developments relying on septic systems are expected to account for just 26 percent of growth but 76 percent of new nitrogen pollution

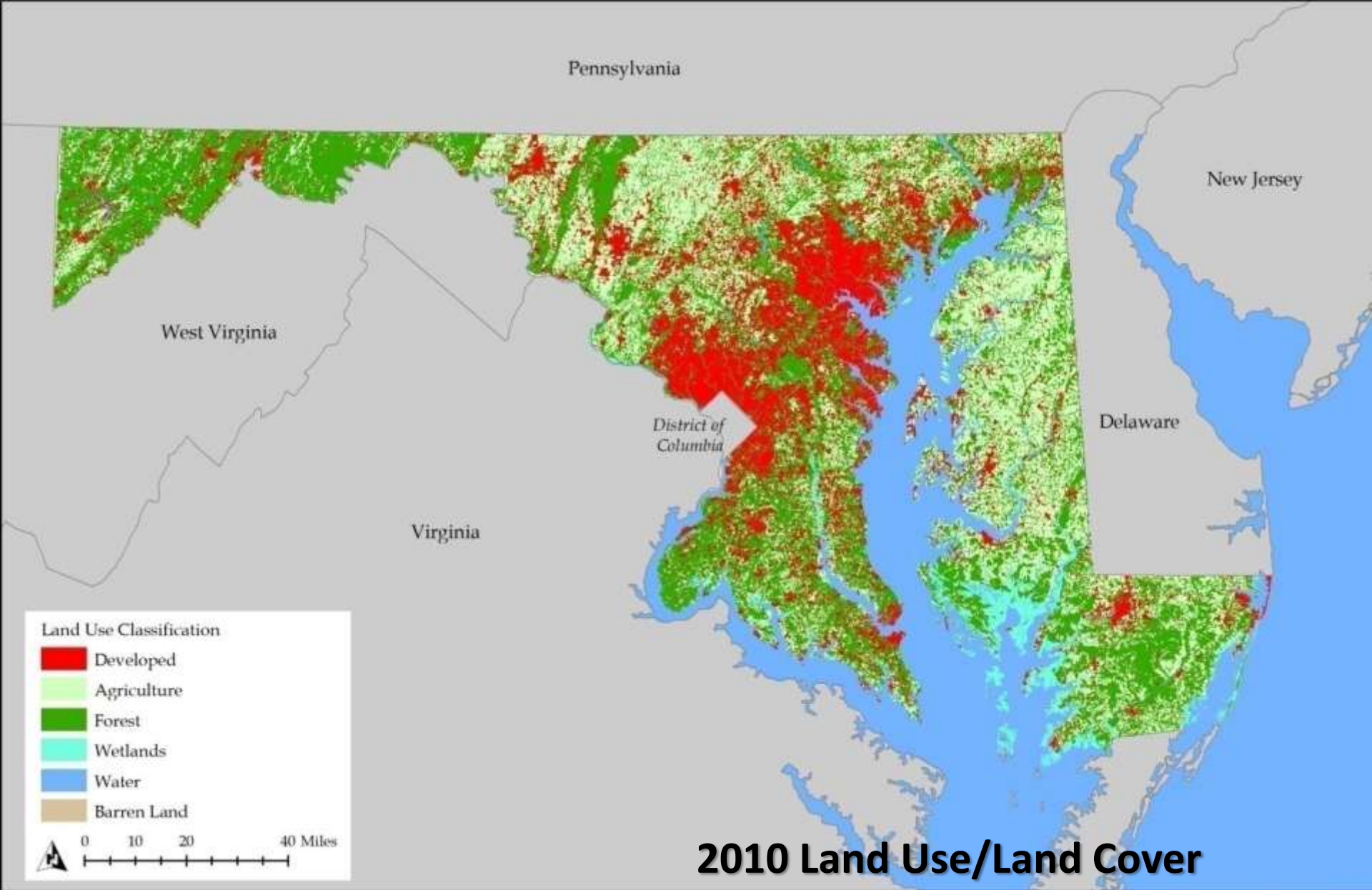
Developed land could be reduced from a projected 400,000 acres to about 110,000 acres

An estimated \$1.5 billion a year in infrastructure costs can be saved



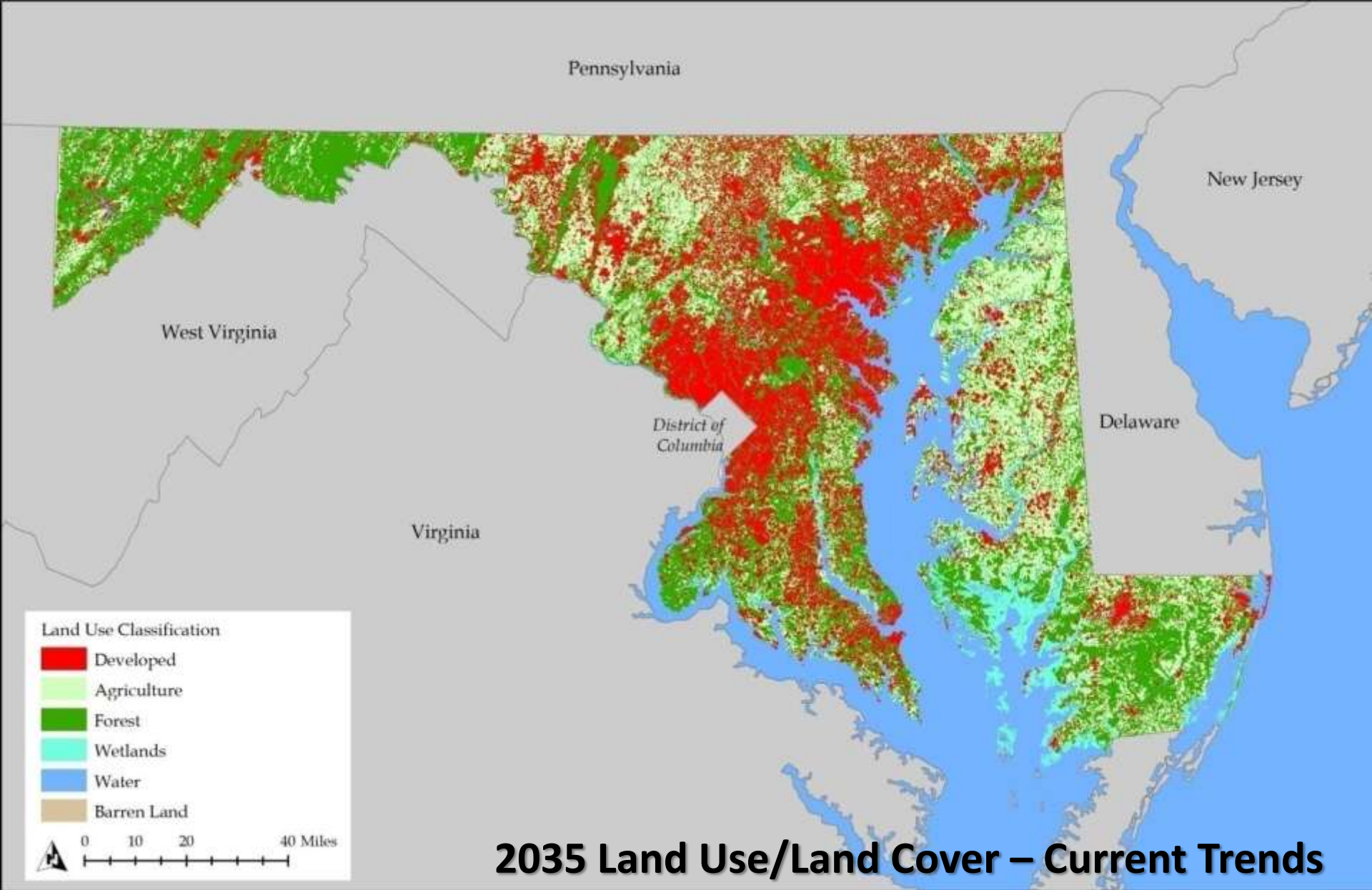


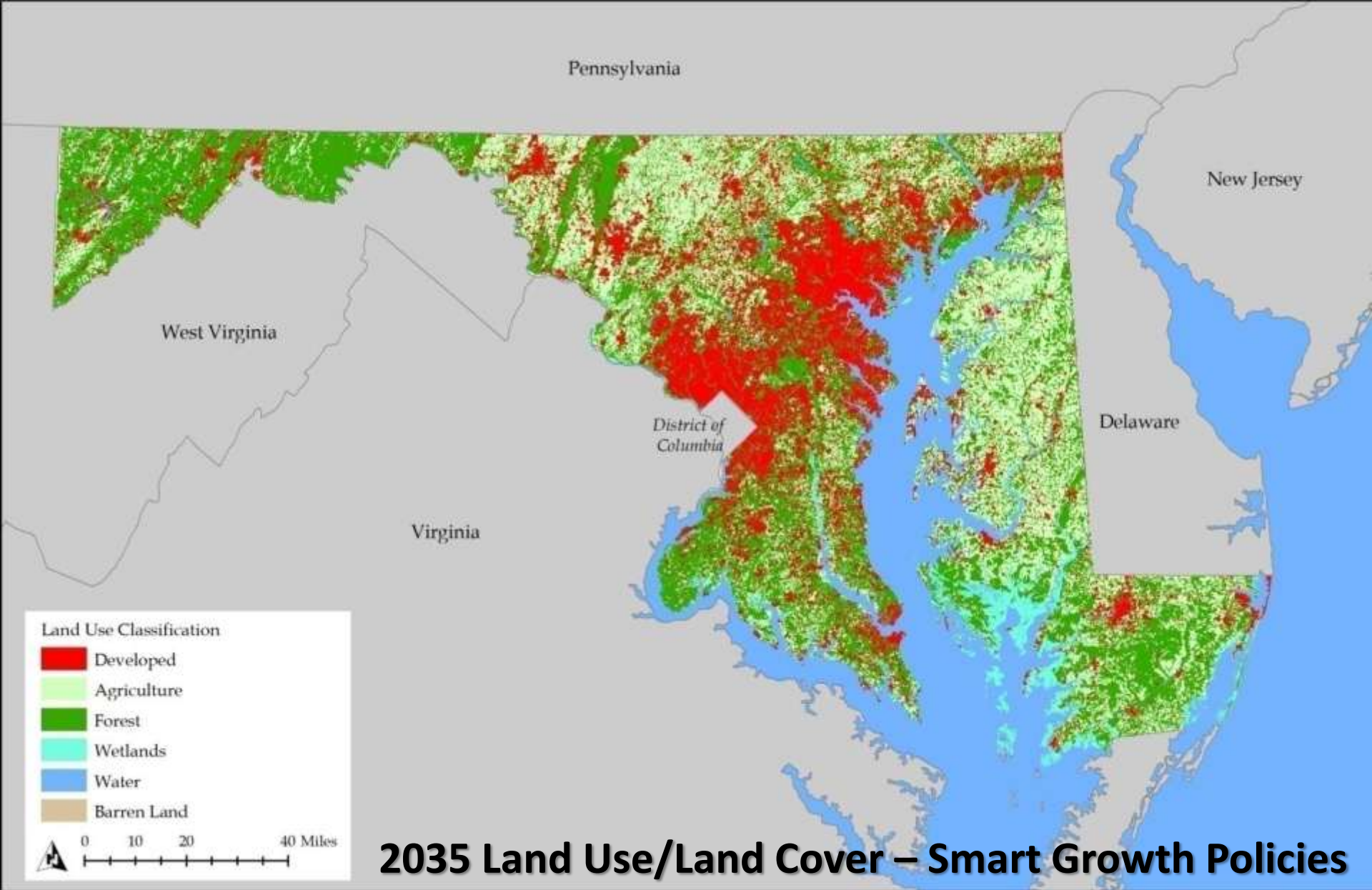
1973 Land Use/Land Cover



2010 Land Use/Land Cover





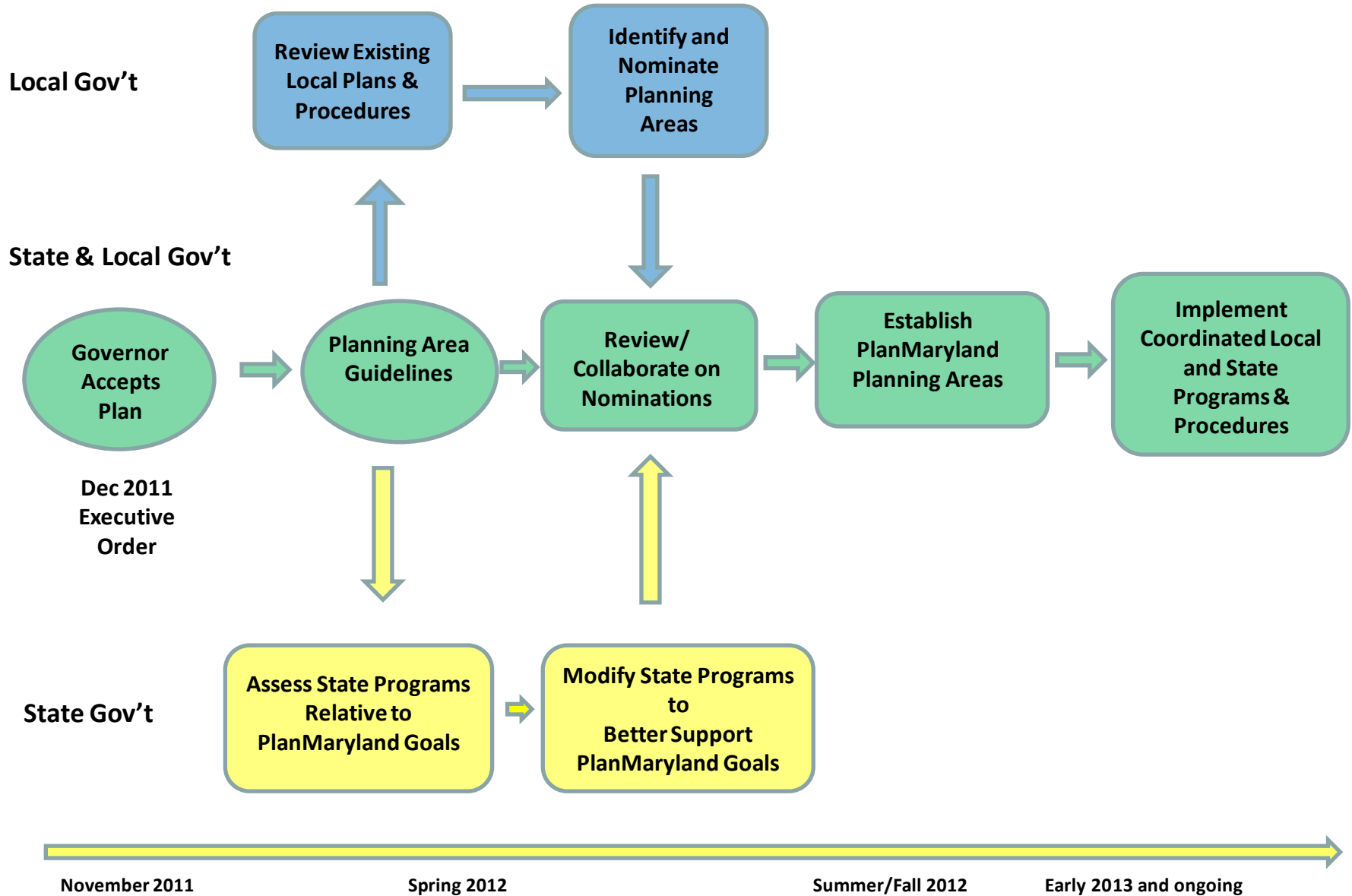


Public Infrastructure Costs: Current Trend vs. Smart Growth by 2035

- Potential savings of:
- \$29 billion in new road construction costs
- \$383 million in road maintenance costs
- \$406 million in water/sewer and school construction costs

	Current Policy Scenario	Smart Growth Scenario	% Savings with Smart Growth
Roads			
Miles of Road	12,349	7,896	36%
New Construction Costs	\$103 billion	\$74 billion	28%
Maintenance/Repair Costs	\$1,063 million	\$680 million	36%
Water/Sewer			
Total Costs	\$2.17 billion	\$2.11 billion	3%
Schools			
Construction Costs	\$3.54 billion	\$3.19 billion	10%

PlanMaryland Process & Responsibilities – Matching State and Local Priorities



PlanMaryland Implementation

Identifying Planning Areas

Locally Identified Places:

Targeted Growth and Revitalization Areas

Established Community Areas

Future Growth Areas

Large Lot Development Areas

Rural Resource Areas



PlanMaryland Implementation

Identifying Planning Areas

Areas for Preservation/Conservation:

Priority Preservation Areas for Agriculture

Natural Resource Areas

Water Resource Areas

Historic and Cultural Areas

Climate Change Impact Areas



PlanMaryland Implementation

State Agency Strategies

Plan, Programs and Procedures that can be modified, re-aligned to support the goals and objectives of PlanMaryland:

Growth

Preservation

Sustainability



PlanMaryland Implementation

State Agency Strategies

Agriculture
Budget and Management
Business and Economic Development
Environment
General Services
Health and Mental Hygiene
Housing and Community Development
Labor, Licensing and Regulation
Maryland Energy Administration
Maryland Higher Education Commission
Natural Resources
Planning
Transportation



PlanMaryland Implementation

Regional Strategies

COG Region Forward and Regional Activity Centers

- Consistent with Maryland's 12 planning visions
- Collaboration with locals to implement the regional vision

BMC Sustainable Communities

- Coordinate housing, economic development, workforce development, and transportation to create jobs

Other Regional Strategies (WILMAPCO)

- Connecting land use and transportation strategies



Implementing PlanMaryland

Identify Planning Areas with local governments by end of 2012

Develop State agency strategies, based on existing State programs, plans and policies, targeted to Planning Areas by end of 2012

Continue to refine and update planning areas over time with locals as they update their local comp plans

Report, update, and track performance toward meeting growth and preservation goals and objectives



Visit Plan.Maryland.gov



More than 500 followers on Facebook at www.facebook.com/plan.maryland

Nearly 1000 followers on Twitter at www.twitter.com/SmartGrowthMD

