



# CLOUD CRUISER

v 2.3

---

## Release Notes

August 7, 2013



Cloud Cruiser 2.2 has tested compatible with Cisco Intelligent Automation for Cloud 3.1. The Cisco Compatible logo signifies that Cloud Cruiser's product has undergone interoperability testing by Cloud Cruiser together with Cisco and a third-party test house based on testing criteria set by Cisco. Cloud Cruiser is solely responsible for the support and warranty of its product. Cisco makes no warranties, express or implied, with respect to Cloud Cruiser's product or its interoperation with the listed Cisco product(s) and disclaims any implied warranties of merchantability, fitness for a particular use, or against infringement.

© 2010–2013 Cloud Cruiser, Inc. All rights reserved.

Cloud Cruiser™ is a trademark of Cloud Cruiser, Inc. Unauthorized use is prohibited.

No part of this guide may be reproduced, transmitted, distributed, displayed, copied, or stored in any storage medium, for any purpose, without prior written consent from Cloud Cruiser, Inc., except that authorized users have the right to download one copy of this guide onto a hard drive for personal use. This guide contains confidential and proprietary information of Cloud Cruiser, Inc. For more information visit <http://www.cloudcruiser.com>.



Cloud Cruiser, Inc.  
2999 Douglas Drive  
Roseville, CA 95661

[www.cloudcruiser.com](http://www.cloudcruiser.com)  
[support@cloudcruiser.com](mailto:support@cloudcruiser.com)  
1-916-367-4804

Cloud Cruiser 2.3 Release Notes  
Table of Contents

---

## Contents

Introduction .....	4
Related documentation .....	4
System requirements .....	4
Hardware .....	4
Operating system .....	5
Database server .....	5
Application server .....	5
Client .....	5
New features and enhancements in v2.3.1 .....	6
Simplified ability to analyze billing data in Microsoft Excel .....	6
Improved aggregation .....	6
Simplified importing of LDAP users .....	6
New features and enhancements in v2.3.0 .....	7
REST API .....	7
Terminology changes .....	8
Collector enhancements .....	8
Reporting enhancements .....	10
Engine enhancements .....	12
User interface enhancements .....	13
License compliance monitoring .....	14
Cleanup of software libraries .....	14
Fixed bugs .....	15

## **Introduction**

This document contains the cumulative release notes for Cloud Cruiser version 2.3.x. This includes the new and updated features, fixes since the previous release (v2.2), and the system requirements. The current release is Cloud Cruiser 2.3.3.

## **Related documentation**

Documentation is provided in the `<base_dir>/docs` directory.

- *Cloud Cruiser 2.3 Installation Guide* (PDF)

This guide describes how to install and configure Cloud Cruiser and the collectors, the database, and the application server.

`<base_dir>/docs/Cloud Cruiser 2.3 Install Guide.pdf`

- *Cloud Cruiser 2.3 User Guide* (PDF)

This guide describes how data is collected and stored, provide details on administering the system, and covers the collectors that deliver usage data to the Cloud Cruiser application. It describes elements of the Job XML required for data usage collection.

`<base_dir>/docs/Cloud Cruiser 2.3 User Guide.pdf`

- *JavaBean Reference* (HTML)

The API documentation for the Cloud Cruiser JavaBean library is in HTML format. To get started, open `index.html` and select the `com.cloudcruiser.batch` package.

Beans are organized into packages, such as `collection`, `transform`, and `filter`. Spring Batch XML examples are included throughout the documentation.

`<base_dir>/docs/batch/apidocs`

## **System requirements**

The following are the minimum hardware and software requirements for running Cloud Cruiser.

### **Hardware**

- 2GHz or faster multi-core processor
- 4GB or more of system memory

## Operating system

You must use the 64-bit version of one of the following operating systems:

- Microsoft Windows Server 2008 or 2012
- Linux with a v2.6 or later kernel
- Windows 7

## Database server

**NOTE:** A database is NOT included with the Cloud Cruiser installation. You must provide one of the following database servers:

- Microsoft SQL Server 2008 or 2012 (Express edition is supported, but be aware of its product limitations, especially database size.)
- Oracle 10g and 11g

## Application server

Java Standard Edition 7 (JDK or JRE), 64-bit version is required.

**IMPORTANT:** Java 6 is no longer supported as of Cloud Cruiser 2.2. You can download Java 7 at <http://www.java.com/getjava>.

For information about installing and configuring Java, see “Setting Up the Java Environment” in the *Installation Guide*.

## Client

One of the following browsers is required:

- Microsoft Internet Explorer (IE) 9 or newer  
**NOTE:** Although the product works on 32-bit versions of IE, Cloud Cruiser strongly recommends that you use the 64-bit version of IE for better performance.
- Mozilla Firefox
- Google Chrome

**NOTE:** Cloud Cruiser has been tested with Firefox 20 and Chrome 26. The application should continue to function with new, automated version updates of these browsers. However, some issues could arise that can only be resolved with subsequent patches to Cloud Cruiser or by reverting the browser update.

## **New features and enhancements in v2.3.1**

The following features are new or enhanced in Cloud Cruiser version 2.3.1.

### **Simplified ability to analyze billing data in Microsoft Excel**

In this release, the Cloud Cruiser database contains views that allow you to more easily analyze loaded charges from within Microsoft Excel using an ODBC connection. After relating the `v_summary` view to the `v_dim_account_struct_0` view by their Account UID columns in Excel, you are able to create a PivotTable that shows charges for a desired level of your account structure.

**NOTE:** This functionality requires Microsoft Excel 2010 or later.

### **Improved aggregation**

Aggregation now produces more accurate usage periods when run with a daily or hourly interval. The tasklet `com.cloudcruiser.batch.CCRecordAggregationTasklet` now has an `adjustUsageInterval` property. When this property is set to `true` (the default) and `interval` is set to either `DAILY` or `HOURLY`, the tasklet sets the usage time in the aggregated record to the full day or hour during which the usage occurred.

Without this option, the tasklet sets the usage time in the aggregated record to the duration between the time of the first collected record and the last, making it impossible to show a full day of usage.

### **Simplified importing of LDAP users**

When you import users into Cloud Cruiser from an LDAP server, they are now active by default. Previously only users with the Admin role were active upon import. For more information, see “Importing LDAP users” in Chapter 6 of the *User Guide*.

## **New features and enhancements in v2.3.0**

The following features are new or enhanced in Cloud Cruiser version 2.3.0:

- [Simplified ability to analyze billing data in Microsoft Excel](#)
- [Improved aggregation](#) on page 6
- [Collector enhancements](#) on page 8
- [Cisco Process Orchestrator support](#) on page 10
- [Reporting enhancements](#) on page 10
- [Engine enhancements](#) on page 12
- [User interface enhancements](#) on page 13
- [License compliance monitoring](#) on page 14
- [Cleanup of software libraries](#) on page 14

## **REST API**

Cloud Cruiser now includes a full-featured Representational State Transfer (REST) API. This gives Cloud Cruiser partners and customers fully programmatic control of:

- Resources
- Cost projection
- Users and user groups
- Reports
- Customers
- Rate plans
- Usage posting

For information about using this API see Chapter 12, “REST API Reference,” in the *User Guide*.

## Terminology changes

The following terminology changes were made in this release.

### Customer resource groups renamed to rate plans

The name “customer resource group” has been changed to “rate plan” throughout the product to reduce confusion with resource groups. In CSV files, the field name for rate plans is `rate_plan` and the short name is `plan`. The old CSV names are deprecated in this release.

**IMPORTANT:** If you have a custom report or stored procedure that refers to `customer_resource_group`, you must change that string to `rate_plan`.

### Cost Management renamed to Financial Administration

The Cost Management tab in the Cloud Cruiser interface has been renamed Financial Administration. This better reflects the needs of cloud service providers, who are not using the product to control costs.

### Reports refer to cost more specifically

In all reports the word “cost” has been changed to “charge” where it applies to an expenditure and to “revenue” where it applies to incoming revenue. This more clearly states the meaning of a given number.

## Collector enhancements

The following collectors were added or enhanced in this release.

### Microsoft Azure Services for Windows Servers Usage API Collector

This native collector was added. It enables you to collect data on the usage of databases, virtual machines, and websites and to manage rate plans.

For more information, see the Java API documentation in `<base_dir>/docs/batch/apidocs/com/cloudcruiser/batch/collect/microsoft/asfws/package-summary.html`. The following sample job files are also available in the `<base_dir>/job_samples` directory:

- `asfws_usage_consumer.xml`
- `asfws_usage_load.xml`.



## Cisco UCS Manager Collector

This native collector was added. It enables you to collect any data exposed by the Cisco UCS Manager XML API, such as usage data on blade servers.

For more information about the collector, see the Java API documentation in `<base_dir>/docs/batch/apidocs/com/cloudcruiser/batch/collect/cisco/ucs/package-summary.html`. A sample job file is also available at `<base_dir>/job_samples/cisco-ucs21-sample-collect.xml`.

For an understanding of the UCS Manager API, see the *Cisco UCS Manager XML API Programmer's Guide*, currently available at [http://www.cisco.com/en/US/docs/unified\\_computing/ucs/sw/api/ucs\\_api\\_book.html](http://www.cisco.com/en/US/docs/unified_computing/ucs/sw/api/ucs_api_book.html).

## VMware vSphere Snapshot Collector and vSphere Perf Collector

These native collectors were added. They are intended to replace the VMware vCenter Collector, which is deprecated in this release. Both collect data using version 5.1 of the vSphere Web Services API. The new collectors provide the following enhancements:

- The separate collectors for snapshot data and performance data give you more flexibility in designing batch jobs. You can map fields to output records any way you want, as with other XML-based collectors.
- You can now collect snapshot data for any property of a VM that is exposed by the vSphere Web Services API.
- You can now collect multiple identifier values for entities associated with a VM such as datastores and networks.
- You can now collect performance data for short-lived entities that are deleted before daily collection is performed.

## OpenStack Collector

This collector now supports the OpenStack 2012.2 (Folsom) release.

## HP Cloud Service Automation (CSA) Collector

This collector's interface to HP CSA has been optimized, improving performance.

## Cisco Process Orchestrator support

When working with Cisco data sources, you can now collect event data from Cisco Process Orchestrator. Collecting the creation and shutdown events for a resource enables you to pinpoint the time it was allocated more accurately than collecting its status at regular intervals.

For information on installing this feature, see “Completing installation for Cisco Process Orchestrator” in the *Installation Guide*. For information about collecting and processing Cisco Process Orchestrator data, see “Collecting data from Cisco Process Orchestrator” in the *User Guide*.

## Reporting enhancements

The following enhancements were made to reports in this release.

### Pivot table reporting

You can now use a pivot table in Microsoft Excel or other spreadsheet programs to create reports using the new `v_summary` database view.

### JasperReports libraries upgraded

Cloud Cruiser now includes JasperReports 5.1 libraries as the Report Engine.

### Invoice with Fixed and Variable Charges report replaced

The Invoice with Fixed and Variable Charges standard report is no longer included. In this release it is replaced by the new Invoice With Fixed Charges report, which shows the same data but breaks out charges by tier.

**IMPORTANT:** If you are upgrading from a previous version, to avoid errors you should remove the Invoice with Fixed and Variable Charges report, along with other reports that are no longer delivered with Cloud Cruiser. For instructions for removing the old reports, see “Removing old reports” in the *Installation Guide*.

### Invoice with Tiers report renamed

The Invoice with Tiers standard report has been renamed to Standard Invoice.

## Separate versions for cost and revenue

This release includes separate Cost and Revenue versions of some reports to more clearly show expenditures and incoming revenue. Cost reports show data on Cost of Goods Sold (COGS) resources, while Revenue reports show data on all other resources similar to the reports available in previous releases. For example, the new Revenue Accounts report supercedes the previous Accounts report and is accompanied by a new Cost Accounts report. The following table shows the new reports in this release and the equivalent old reports:

<i><b>New report</b></i>	<i><b>Old report</b></i>
Top Revenue by Account	Top Cost For Account
Top Cost by Account	
Revenue Budget	Account Budget
Cost Budget	
Revenue Trend for Account	Cost Trend For Account By Month
Cost Trend for Account	
Revenue Variance	Cost Variance <sup>1</sup>
Cost Variance	
Revenue Variance by Period	Cost Variance By Period <sup>1</sup>
Cost Variance by Period	
Revenue Accounts	Accounts
Cost Accounts	

1. This name is used for a new Cost report, so running the report will now display COGS data rather than charge data.

Also see the related terminology change [Reports refer to cost more specifically](#) on page 8.

If you upgrade from a previous release the old reports remain in place, available in the Cloud Cruiser Portal and to batch reporting jobs. To avoid confusion and prevent errors, you should remove the old reports after upgrading and modify batch reporting jobs to run the equivalent new reports instead. For instructions for removing the old reports, see “Removing old reports” in the *Installation Guide*.

## Engine enhancements

The following enhancements were made to the Cloud Cruiser engine in this release.

### Replace missing feeds with adjacent dates

When a feed is missing for a selected date because no data was collected, you can prevent gaps in your data and reports by automatically using the feed from an adjacent date as estimated usage data for the selected date. The new assembly option `EnableMissingFeedSupport` lets you specify a maximum number of days prior to the selected date to scan for feed files to use.

For more information, see the Java API documentation for the `CCRecordAssemblyTasklet` class at `<base_dir>/job_samples/docs/batch/apidocs/com/cloudcruiser/batch/CCRecordAssemblyTasklet.html`.

### Specifying usage time zone for a batch job

You now specify the time zone of origin for all data collected in a batch job rather than specifying it for individual collection steps in the job. For more information, see the Java API documentation for the `processInfo` class at `<base_dir>/job_samples/docs/batch/apidocs/com/cloudcruiser/batch/ProcessInfo.html`.

The `usageTimeZone` property of `CCRecordCollectTasklet` has been removed. If any of your batch jobs use this property, you must modify them to set the time zone with `processInfo` instead.

### Ability to sort a collection step into multiple feeds

The tasklet `CCRecordCollectTasklet` collects data from an external source and writes it to a feed. In this release, the new tasklet `CCRecordSiftingCollectTasklet` collects data from an external source and writes each record to a feed determined by the value of an identifier. This allows you to group similar records for discreet processing by sorting records into separate feeds.

For more information, see the Java API documentation in `<base_dir>/docs/batch/apidocs/com/cloudcruiser/batch/CCRecordSiftingCollectTasklet.html`.

### Ability to rename a resource based on identifier lookup

The `RenameResources` transform processor renames a resource based on looking up that resource's name in a lookup table. In this release, the new `RenameResourceFromTable` processor takes that capability a step further, renaming a resource based on looking up the value of an identifier in the same `CCRecord`.

For more information, see the Java API documentation in `<base_dir>/docs/batch/apidocs/com/cloudcruiser/batch/transform/RenameResourceFromTable.html`.

## Proration applies to Fixed charges for allocated resources

Previously, proration applied only to Variable charges for an allocated resource. In this release, when proration is enabled (the default) for an allocated resource in the Charge step of a batch job, it applies to both Fixed and Variable charges. This allows you to charge more accurately for allocated resources.

Disabling proration also applies to both types of charges.

## Ability to disable proration for hourly and monthly charges

In this release, you can disable proration of hourly and monthly charges for an allocated resource. Disabling proration was already available for daily charges.

## User interface enhancements

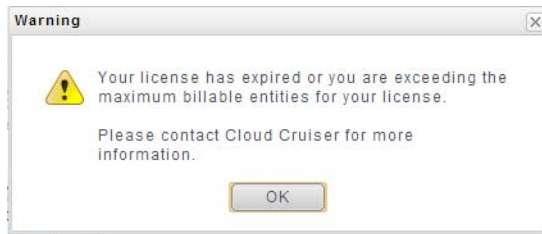
The following enhancements were made to the Cloud Cruiser user interface (UI) in this release:

- The UI follows more web standards and is more consistent.
- Better support for browser differences.
- You can more easily embed the UI in other applications.
- Scrollbars behave better when you resize a browser window.
- The scheduling interface now allows you to see the server time.

Also see the related terminology changes [Cost Management renamed to Financial Administration](#) on page 8 and [Reports refer to cost more specifically](#) on page 8.

## License compliance monitoring

Depending upon how you licensed Cloud Cruiser, the product might now monitor your usage to help you maintain compliance with your license. For example, if your license allows 5000 unique operating system instances but Cloud Cruiser has collected information on 5073 such instances you are out of compliance and the following warning message now appears to inform you.



If this happens, please contact your sales representative to purchase additional license capacity. In this case Cloud Cruiser personnel will configure your system to reflect the increased capacity, removing the warning.

**NOTE:** All Cloud Cruiser functionality remains enabled when you are out of compliance. However, batch jobs with a Charge step that previously ran with a result of Completed Successfully will now have the result Completed with Warnings.

## Cleanup of software libraries

Obsolete open source libraries were removed in this release.

Cloud Cruiser 2.3 Release Notes  
Fixed bugs

## **Fixed bugs**

The following bugs have been fixed since the Cloud Cruiser 2.2 release:

<b>Description</b>	<b>Bug ID</b>	<b>Fixed in</b>
Identifiers with carriage returns or line feeds within the data caused the batch collection process to fail. (Fixed in version 2.2, not previously documented)	2206	2.3.0
When the server time zone is set to UTC, a batch job scheduled for One Time occurrence will not run.	2182	2.3.0
The date you select when scheduling a job was based on the time zone of the computer where Cloud Cruiser is running instead of the Server Time Zone you selected in the System Configuration page.	2438	2.3.0
When you ran a small job using a wide range between the Start Date and End Date, some of the log entries for those runs showed an incorrect Selection Date even though the job ran against the correct dates shown in the table on the Batch Monitoring page.	2667	2.3.0
The <code>includeZeroResources</code> flag had no effect on monthly allocated resources with proration disabled.	2364	2.3.0
If you created a rate revision for a resource with a Start Date earlier than the Start Date of any existing rate revision for that resource, one or more End Dates would be incorrect.	2611	2.3.0
When a transaction processing job ran with reprocessing set to true, only the final date of a daily recurring transaction was reprocessed.	2645	2.3.1
When a transaction processing job ran with reprocessing set to true, a monthly recurring transaction was reprocessed with each run of the job instead of only once per month.	2657	2.3.1
After the HP CSA collector read a list of users, it skipped the first user in the list and did not collect subscriptions for that user.	2287	2.3.0
The VMware vCenter Collector failed to collect data under certain conditions. This bug was introduced in version 2.3 and did not affect earlier versions.	2710	2.3.1
An allocated resource with a fixed rate caused an error in proration, preventing the charge step of a job from completing.	2783	2.3.3
Creating an alternate account structure that used the first level of the default structure as one of its levels caused reporting issues. (Fixed in version 2.2, not previously documented)	2218	2.3.0

Cloud Cruiser 2.3 Release Notes  
Fixed bugs

Description	Bug ID	Fixed in
If you selected an Account Structure other than Default when running a report and the Account Structure included levels that were not in hierarchical order, the report had inconsistencies or missing data.	2487 2488 2489 2508	2.3.0
When you ran certain reports in a batch job and specified PREVPERIOD as the accounting period, the report ran with an incorrect accounting year and accounting period, returning incorrect data.	2624	2.3.0
When using Internet Explorer 10 or any version of Chrome, when you exported an advanced report to Excel, even though the export completed successfully the "Running report..." progress dialog box did not disappear until you logged in again.	2304	2.3.0
If you ran a report that displayed a chart, then resized the browser window, you received Java errors in the content pane. (Fixed in version 2.2, not previously documented)	1590	2.3.0
When selecting a resource for a transaction, the type-ahead search treated each character you typed as an independent string, preventing matches on anything past the first character of a resource name.	2729	2.3.3
If you used the File Type menu to filter the data loads displayed on the Load Tracking page, no loads were displayed.	2455	2.3.0
On the Resources page, the filtering menus were sometimes truncated.	1924	2.3.0