

# Vehicle Diagnostics v. 3.2

## Release Notes

---

### Introduction

Version 3.2 of Omnitracs Vehicle Diagnostics includes the following changes:

- The Vehicle Maintenance application is re-named Fault Monitoring.
- Users access the Fault Monitoring application (formerly Vehicle Maintenance) through the Vehicle Diagnostics menu item on the Services Portal application menu.
- Vehicle Diagnostics also includes the Trailer Pressure Monitoring (TPM) application, which is new to this release.

Trailer Tire Inflation Alerts (TTIA) also belongs to Vehicle Diagnostics, but there is no web user interface. TTIA data is available through web services only.

### New Features and Functions

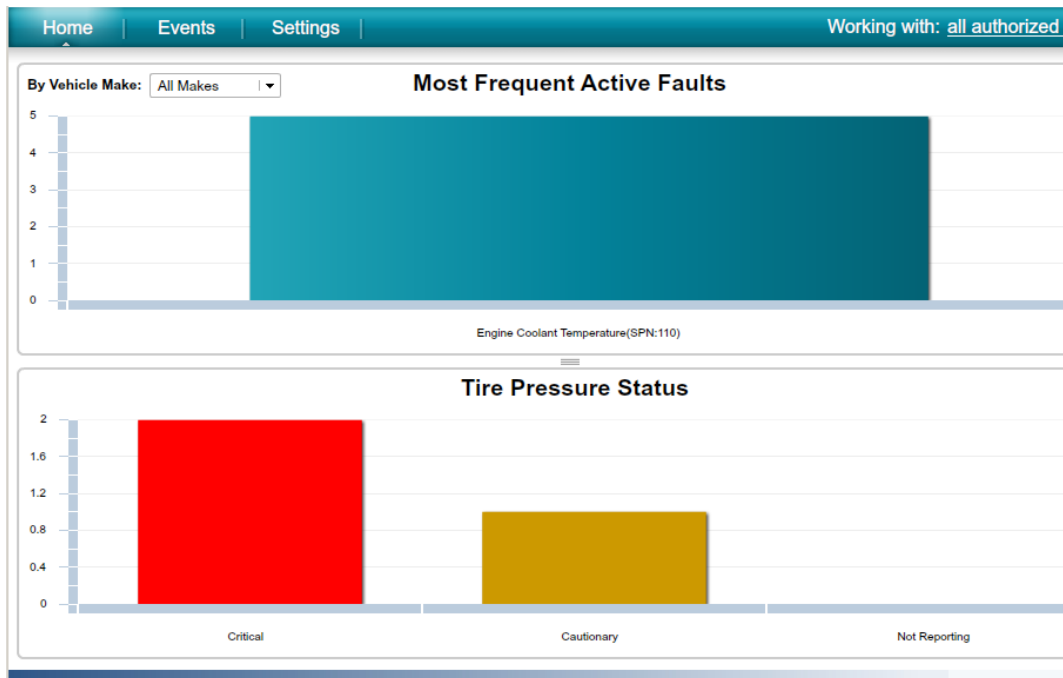
#### User Interface

The user interface has been re-designed to display information from both fault monitoring and TPM, depending on the applications to which you subscribe.

#### Vehicle Diagnostics Home Page

The Vehicle Diagnostics **Home** page includes one or two panels, depending on the applications to which you subscribe.

If you subscribe to Fault Monitoring, the **Most Frequent Active Faults** panel displays. If you subscribe to Tire Pressure Monitoring, the **Tire Pressure Status** panel displays.



To view more details about the data shown in the graphs, hover the mouse cursor over the colored bars.

To view details about specific Active Faults, click the **Active Faults** panel. To view details about tire pressure for specific vehicles, click the **Tire Pressure Status** panel. You can also see more details about faults and tire pressure by clicking the **Events** menu item.

To learn more about the data displayed, click the question mark icon at the top right of the panel.

## Events Page

What you see on the **Events** page depends on the applications to which you subscribe.

The **Faults** display shows a list of faults reported for the vehicles that meet the search criteria you specify. For information on the fields displayed, click the question mark icon at the top right of the panel.

Showing: Type=Fault, Start Date=08/31/13 12:00 A, Condition=Engine Coolant Temperature(SPN:110), Make=All Makes, Include Inact

Vehicle ID	Make	Conditions	SPN	FMI	Reported On
105000001	MRCBN	Engine Coolant Temperature - Erratic, intermittent, or inc	110	2	09/12/13 04:13 A
105000001	MRCBN	Engine Coolant Temperature - Erratic, intermittent, or inc	110	2	09/12/13 04:04 A
105000001	MRCBN	Engine Coolant Temperature - Erratic, intermittent, or inc	110	2	09/11/13 10:35 A
105000001	MRCBN	Engine Coolant Temperature - Erratic, intermittent, or inc	110	2	09/11/13 10:31 A
105000021		Engine Coolant Temperature - Erratic, intermittent, or inc	110	2	09/11/13 10:28 A

Faults Displayed: 5

The **Tire Pressure** display shows the tire pressure status for the vehicles that meet the search criteria you specify. For information on the fields displayed, click the question mark icon at the top right of the panel.

Type=Tires, Start Date=08/31/13 12:00 A, Include only Current items, Tire Status=All, Message Reason=All, Vendor=All

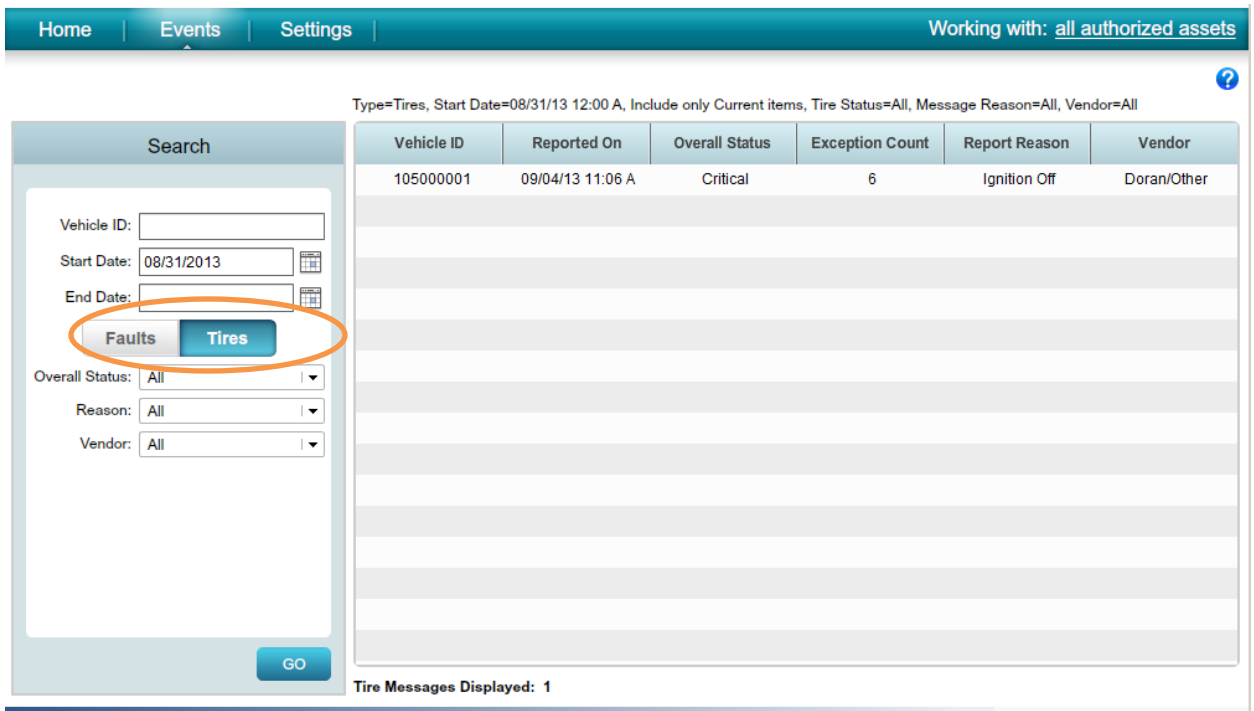
Vehicle ID	Reported On	Overall Status	Exception Count	Report Reason	Vendor
105000001	09/04/13 11:06 A	Critical	6	Ignition Off	Doran/Other

Tire Messages Displayed: 1

To see more detail about tire pressure for a specific vehicle, click the row for that vehicle. For details about specific tires, hover the mouse cursor over the image of the tire in question.

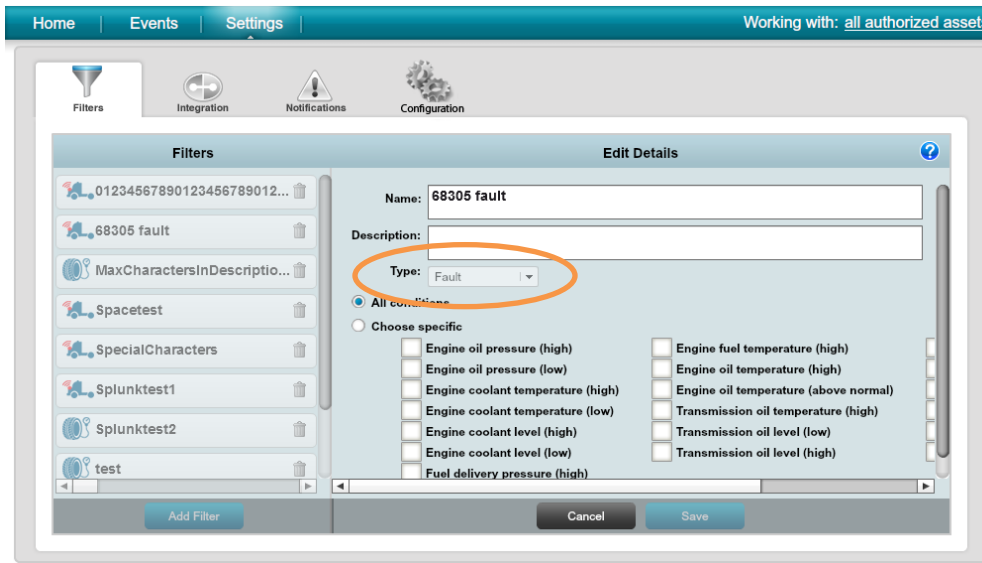


To switch between the Tire Pressure display and the Faults display, click the **Faults** or **Tires** button in the **Search** panel.

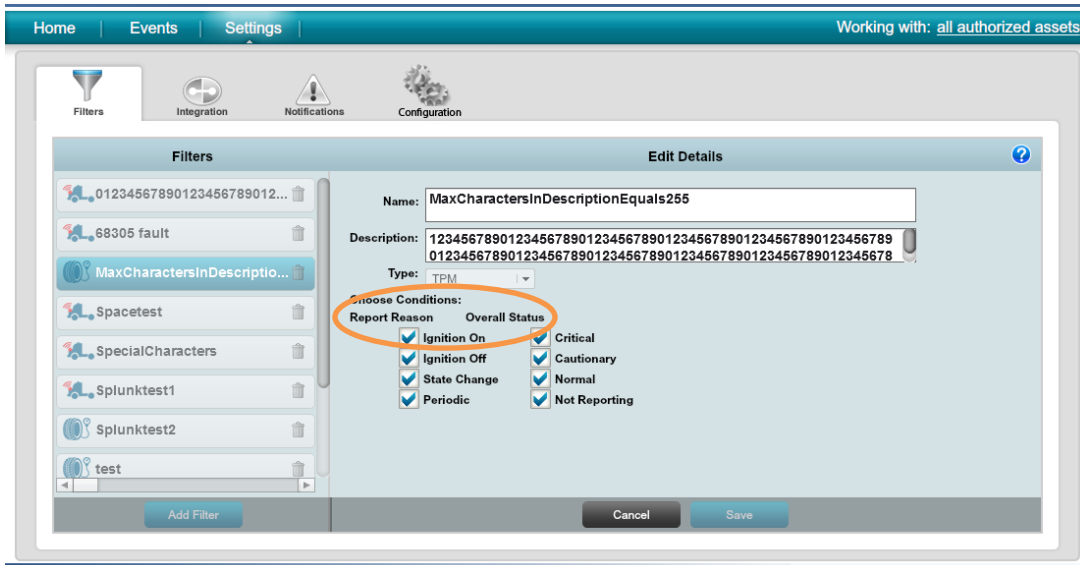


## Settings/Filters

The **Filters** panel has been updated to include Tire Pressure Monitoring events (if you subscribe to TPM). A single filter can apply to only faults or only tire pressure monitoring, but not both. If you subscribe to both applications, a **Type** drop down box allows you to choose between the two types of filter. If you subscribe to only one of the applications, the **Type** drop down box does not appear.



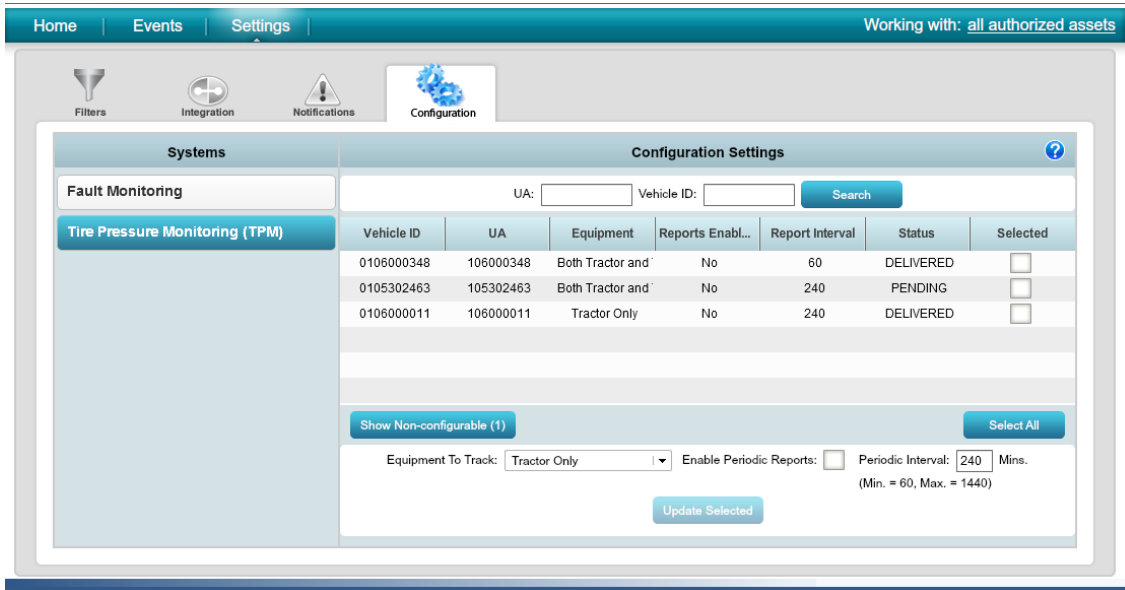
Filters for TPM must include **at least** one report reason (why the mobile sent information about tire pressure) and one overall status. The vehicle's overall status is defined as the worst tire pressure status reported for any of the monitored tires on the vehicle.



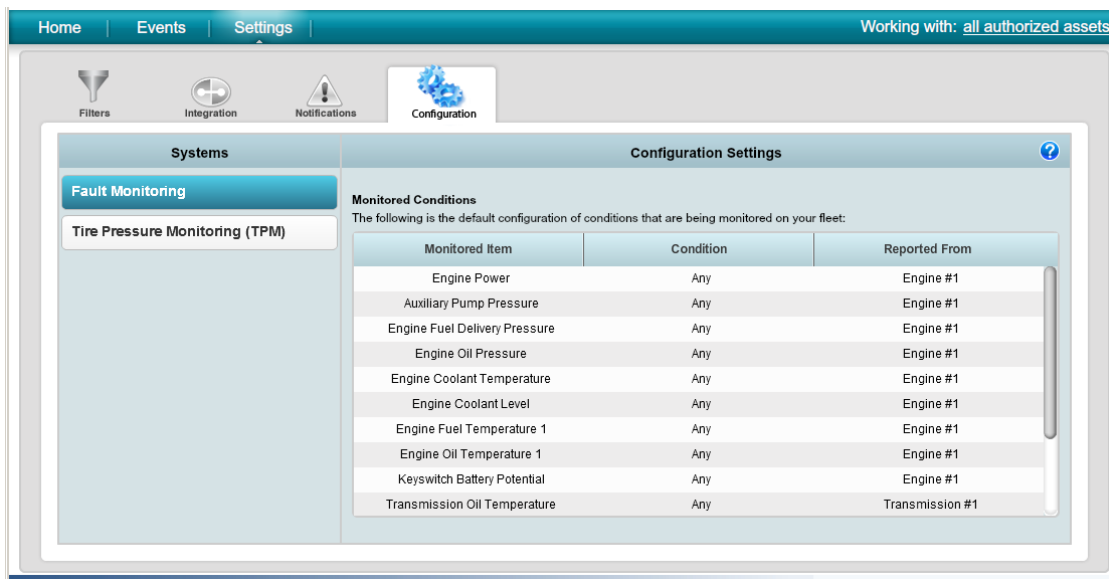
## Settings/Configuration

The **Configuration** panel shows either just Fault Monitoring, just Tire Pressure Monitoring, or both, depending on the applications to which you subscribe.

The TPM monitoring configuration panel enables you to view and edit the mobile TPM configurations. For more information, click the question mark icon on the Configuration Settings panel.



The configuration tab for Fault Monitoring allows you to view, but not edit, the default configuration for mobile units. To change fault monitoring configurations, contact your Omnitracs customer representative.



Omnitracs, LLC  
10290 Campus Point Drive  
San Diego, CA 92121-1522  
U.S.A.

Copyright © 2013-2014 Omnitracs, LLC. All rights reserved.

Omnitracs is a trademark of Omnitracs, LLC. All other trademarks are the property of their respective owners.

Omnitracs endeavors to ensure that the information in this document is correct and fairly stated, but Omnitracs is not liable for any errors or omissions. Published information may not be up to date, and it is important to confirm current status with Omnitracs.

This technical data may be subject to U.S. and international export, re-export or transfer (export) laws. Diversion contrary to U.S. and international law is strictly prohibited.

70-JD019-4 Version 3.2A

March 2014