



Intelligent Vehicle Gateway (IVG) | Getting Started



Install the IVG

1. Attach RAM ball mount to the dash with backing plate.
2. Attach RAM ball mount to the holster.
3. Connect RAM arm to both ends of RAM ball mounts.
4. Route power cable from vehicle's diagnostic connector to the IVG display.

For complete instructions, refer to the *IVG Installation and Troubleshooting Guide (80-JE026-1)*.

WARNING

Use of the IVG must not divert attention from road and traffic. Driving while distracted can lead to a serious accident. Mount the display so that it does not interfere with the operation of the vehicle in any way.

Improper cable installation can interfere with the vehicle pedals or steering. This can cause a crash that results in serious injury or death. Mount the cables so that they cannot interfere with the brake, accelerator, clutch, or steering wheel, EVEN IF THE TIE WRAPS FAIL.

Install the Power I/O Cable

1. Connect the Power I/O cable to the truck's diagnostic connector.
2. Connect Power I/O cable to back of IVG display.
3. Insert IVG display into the holster.
4. Loop and secure all excess cable. Verify that the display can reach to the driver and passenger side window. This is required for Hours of Service in the event of a roadside audit.

Using the IVG

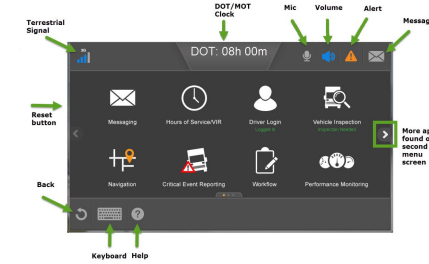
The IVG presents information by:

- Displaying it on the color touchscreen
- Playing an alert sound
- Reading text out loud

You interact with it by pressing buttons or tapping on-screen buttons and characters on the virtual keyboard.

Understanding the Home Screen

The Home screen displays buttons that start applications. Unavailable apps are grayed out.



Log In

1. From the Home screen, tap **Driver Login**.
2. Tap in the input fields and the keypad appears.
3. Enter **Driver ID** and **Password**; then close the keyboard. The first driver logging in is Active, the second driver selects Active or Inactive.
4. Tap **OK**.
5. Select a duty status and tap **OK**.

Your driver ID is replaced by your name when login is successful.

Log Out

1. From Home, tap **Driver Login**.
2. Tap the driver to log out and tap **Logout**.
3. Select a duty status and tap **OK**.

Installing the Hardware

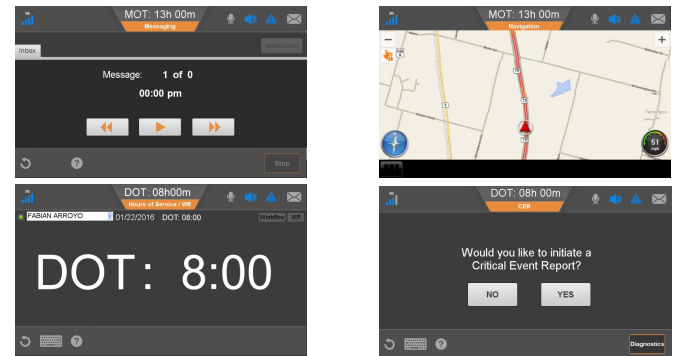
IVG in Motion

The unit can help maximize safety by helping minimize driver distraction. Unless two drivers are logged in, only four simplified applications are available.

The only things a driver can do are:

- Listen to messages, but not read or write.
- See time remaining before a potential HOS violation.
- Follow turn-by-turn directions.
- Initiate a Critical Event Report.

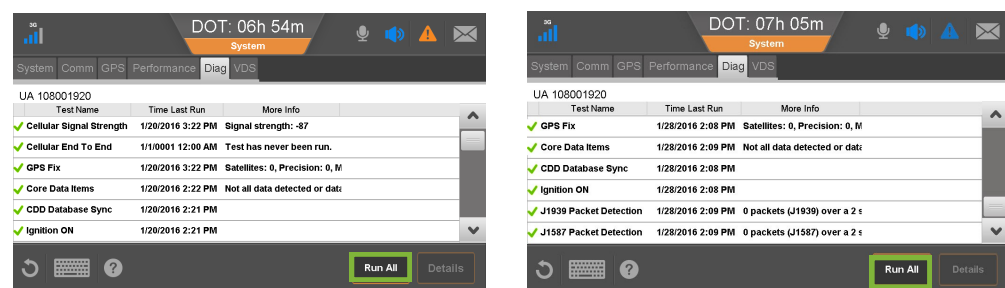
Press the reset button on the side of the IVG to manually reset if it is not functioning.



System Verification

Ensure engine is running and the vehicle is parked with a clear view of the sky.

1. From **Home**, tap right arrow, tap **System**, tap **Diag**, then tap **Run All**.



2. Confirm that a **✓** displays for Cellular Signal Strength, Cellular End to End, GPS, Core Data Items, Ignition ON, and CDD Database Sync. Results of the J1939 and J1587 test depend on the databus connections and at least one of these tests must pass. If neither does, contact Omnitracs at (800) 541-7490.
3. From the Home screen, tap **Messaging** > **Compose**, tap **Freeform**, type the vehicle's ID; then tap **Send**.
4. Check **Outbox** for **✓** to confirm it was sent.
5. From **Home**, tap **Settings** > **Volume** and set volume level and tap **Test**.

Keeping Electronic Hours of Service Logs

Review/Edit Logs

For more details on these tasks, see the onboard support under **Driver Training**.

1. From the Home screen, tap **Hours of Service**.
2. Wait for log updates to complete; then tap **Certify**.
3. If you need to change a non-driving status:
 - a. Tap the incorrect status; then tap **Edit**.
 - b. Make your changes and add remarks; then tap **Next**.
 - c. Enter an **Edit Reason**; then tap **Save**.
 - d. Tap **Not Ready** to make more edits or tap **Agree**.
4. Tap **Not Ready** to not certify your logs or tap **Agree**.

Certify Logs

You certify logs in 24-hour increments, not all at once.

1. From Home, tap **Driver Login**.
2. Wait for log updates to complete; then tap **Certify**.
3. Tap **Not Ready** to make edits or tap **Agree**.

Change Duty Status

When vehicles move, drive time is recorded in the active driver's logs; however, you may need to set other duty statuses manually.

1. From the **Status** tab, tap **Change**.
2. Tap a duty status, enter remarks as needed; then tap **OK**.
3. Tap your new status.
4. Enter remarks, then tap **OK**.

Regulatory Compliance Information: FCC/IC Compliance Statement

This device complies with part 15 of the FCC Rules. Operation is subject to the following two conditions:

- (1) This device may not cause harmful interference, and
- (2) This device must accept any interference received, including interference that may cause undesired operation.

Caution

This equipment should be installed and operated with minimum 20 cm between the radiator and body. This transmitter must not be collocated or operating in conjunction with any other antenna or transmitter unless authorized to do so by the FCC/IC.

When applicable, if customer chooses to perform self-installation of terminals, it must be in accordance with Omnitracs's installation and training guidelines. Failure to do so may void the warranty.

Omnitracs, LLC
717 N. Harwood Street, Suite 1300
Dallas, TX 75201 U.S.A.

© 2015, 2016, 2019 Omnitracs, LLC. All rights reserved.
Omnitracs is a trademark of Omnitracs, LLC. All other trademarks are the property of their respective owners.

Omnitracs endeavors to ensure that the information in this document is correct and fairly stated, but Omnitracs is not liable for any errors or omissions. Published information may not be up to date, and it is important to confirm current status with Omnitracs.

This technical data may be subject to U.S. and international export, re-export or transfer (export) laws. Diversion contrary to U.S. and international law is strictly prohibited.

80-JE014-1 Rev. C
April 2019

Obtaining Return Material Authorizations (RMAs)

Before removing a potentially defective component, consult the *IVG Installation and Troubleshooting Guide (80-JE026-1)*.

You need the serial numbers of both the old and new units.

If you have a substitute IVG in stock, install it and initiate an RMA request afterward.

Initiating an RMA Request

1. Log in to Omnitracs Customer Portal at <https://customer.omnitracs.com>.
2. Click **Returns**.
3. Click **Continue** under **Initiate RMA**.

After you are issued an RMA number, a replacement will be shipped. Return the defective device within 30 days.