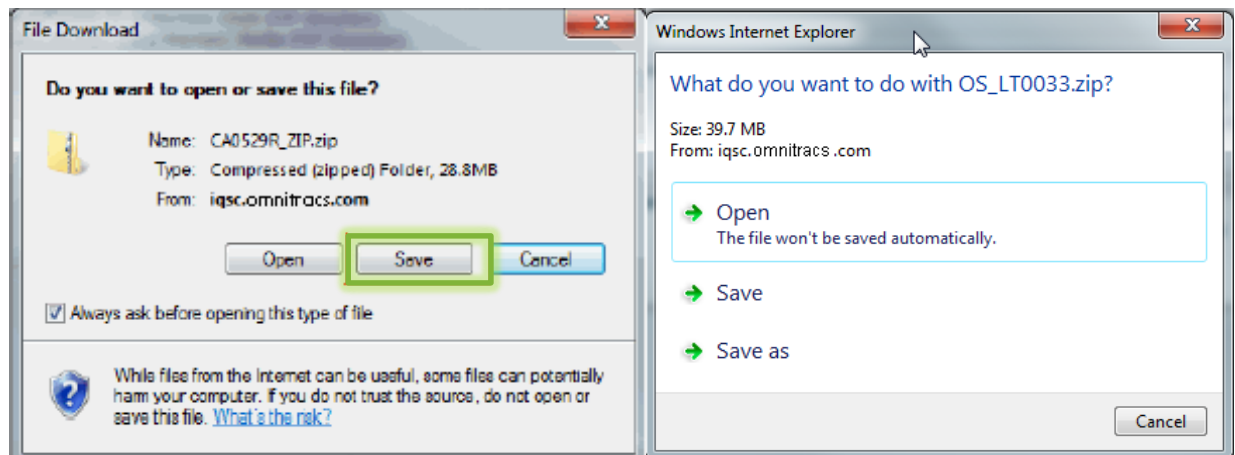


## Instructions for Copying the IVG Software and OS to a Memory Stick

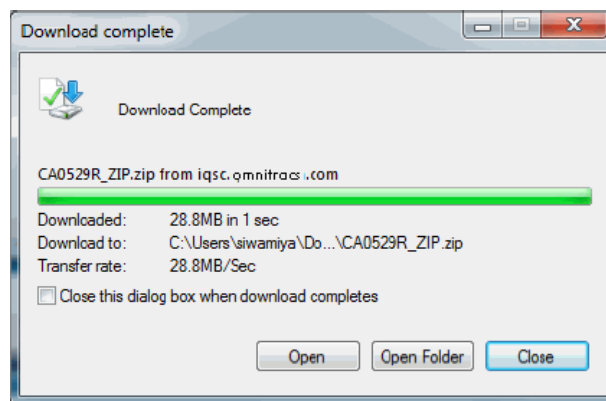
This document describes the process for getting Omnitracs Intelligent Vehicle Gateway (IVG) software and OS from the website to a USB memory stick.

**Note:** both the software and OS **cannot** be copied on the same USB stick.

1. Install a **blank** 2GB minimum memory stick into the USB port on your PC. Make sure that there are no existing files on the USB stick.
2. Click the **Firmware/Software/Tools** section, then click on the link to download the latest version of IVG software or OS.
3. Click **Download** for the software or OS you want to install.
4. You will see a screen asking if you want to open or save the file.

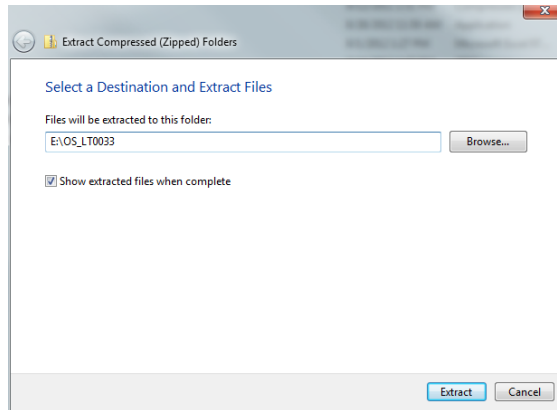


5. Click **Save** and then **Save** again. The zip file is downloaded to your computer. Click **Close**.

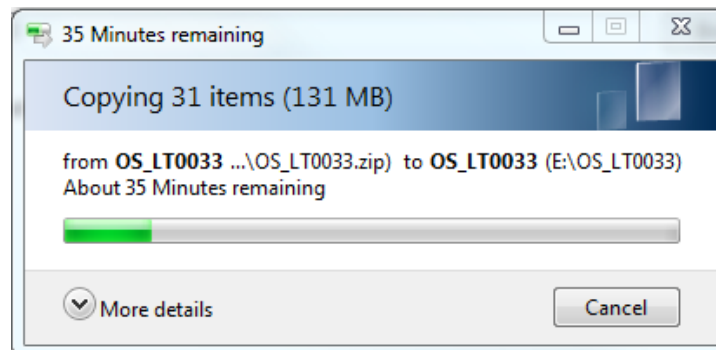


6. IVG software files are zipped to compress the file sizes and speed up transfer time. Navigate to the zip folder. Right click and choose **Extract All...** from the popup menu.

7. You will see a screen to select a destination of the extract files, do the following:
- a. Click **Browse** to choose your USB stick location, shown below as E:\.

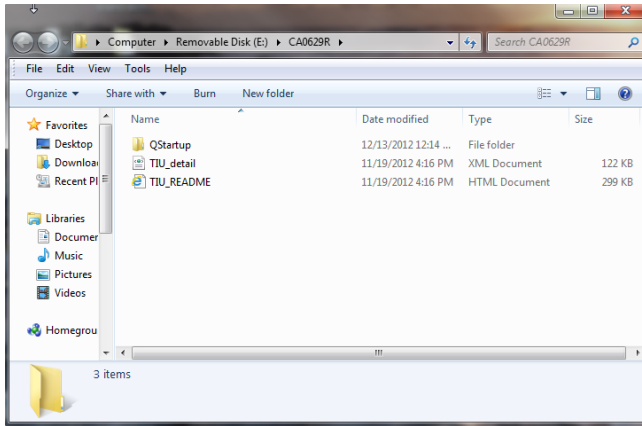


- b. Click **Extract**. The unzipping status displays.

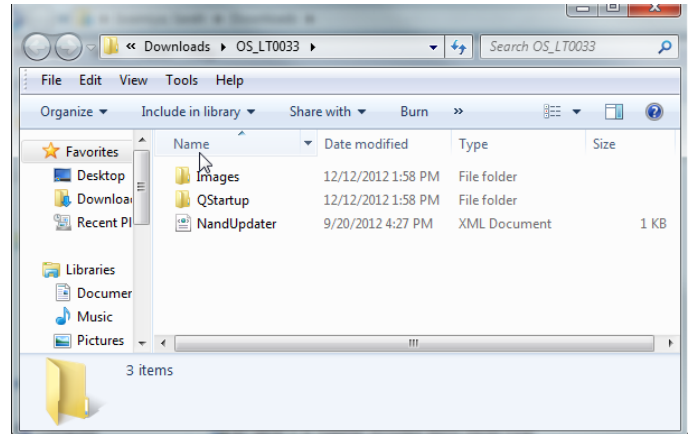


8. Once the files are successfully unzipped, confirm that the files display, as shown in the examples below

## Software



## OS



Refer to Instructions for Upgrading the IVG Using Memory Sticks (80-JE012-1) for instructions on loading software and an OS on to the IVG.

Omnitracs, LLC  
717 N. Harwood Street, Suite 1300  
Dallas, TX 75201 U.S.A.

© 2016 Omnitracs, LLC. All rights reserved. Omnitracs is a trademark of Omnitracs, LLC. All other trademarks are the property of their respective owners.

Omnitracs endeavors to ensure that the information in this document is correct and fairly stated, but Omnitracs is not liable for any errors or omissions. Published information may not be up to date, and it is important to confirm current status with Omnitracs.

This technical data may be subject to U.S. and international export, re-export or transfer (export) laws. Diversion contrary to U.S. and international law is strictly prohibited.

80-JE013-1 Rev. A  
March 2016