

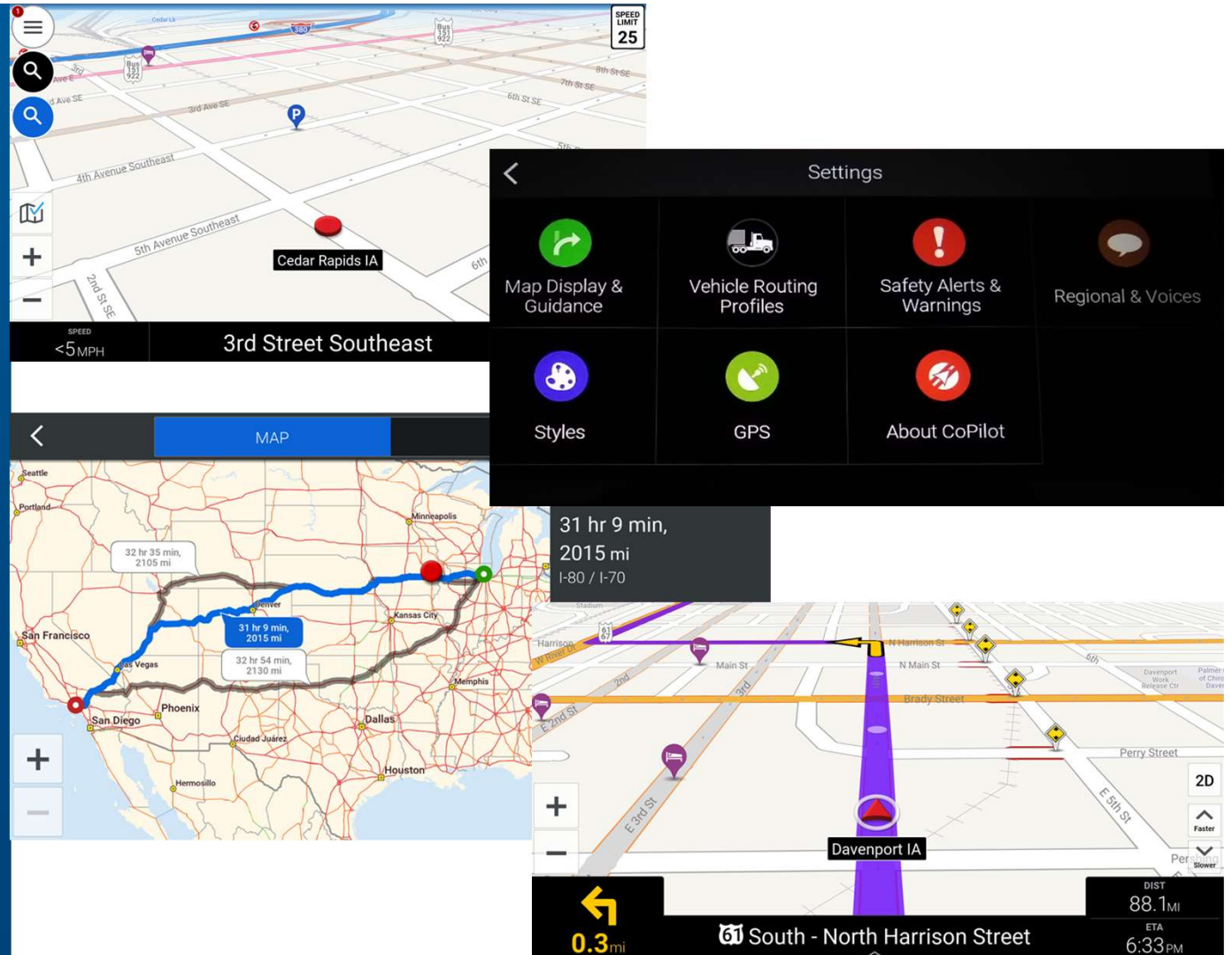


OmnitracS Sales - CoPilot 10.7.2



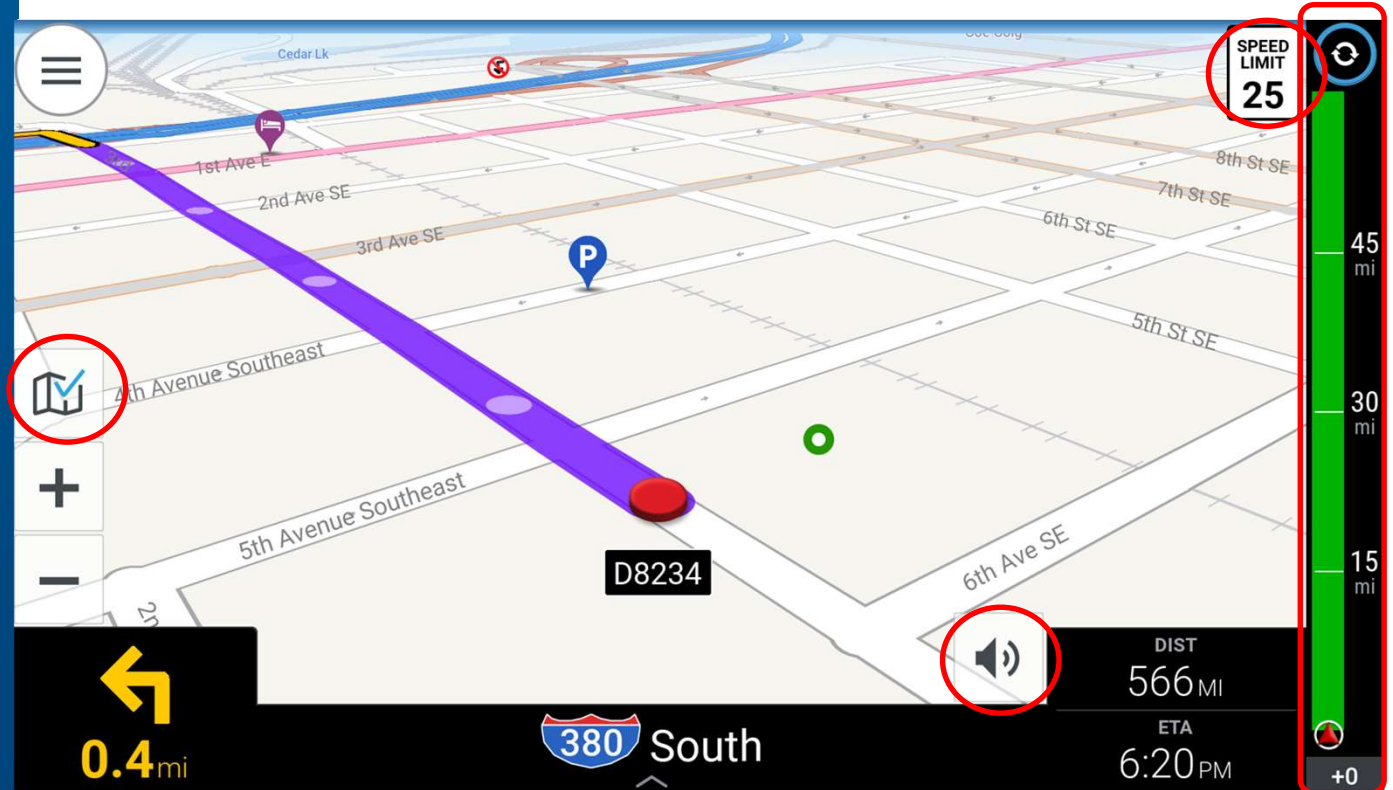
CoPilot 10.7.2 Improvements

- Redesigned for “quicker” exp.
- Improved graphics perform
- Visual on alternate routes*
- “Approaching” notification ALL STOPS...
- Heading Logic (exiting a stop)
- Shortened the verbal guidance
- POI searching - by set
- Many Performance and Routing improvements



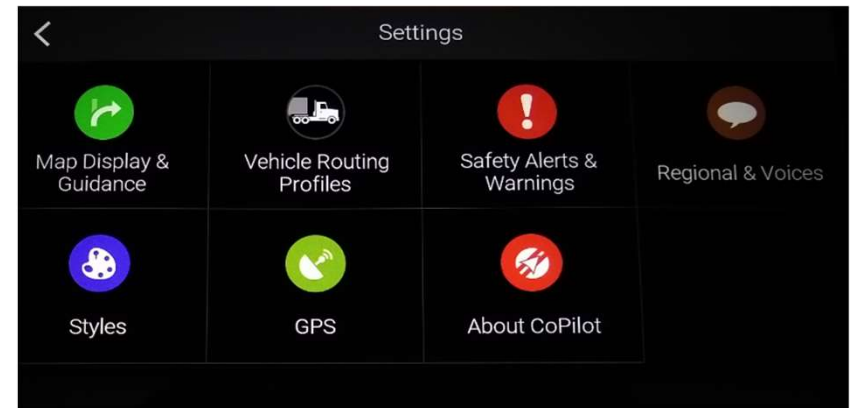
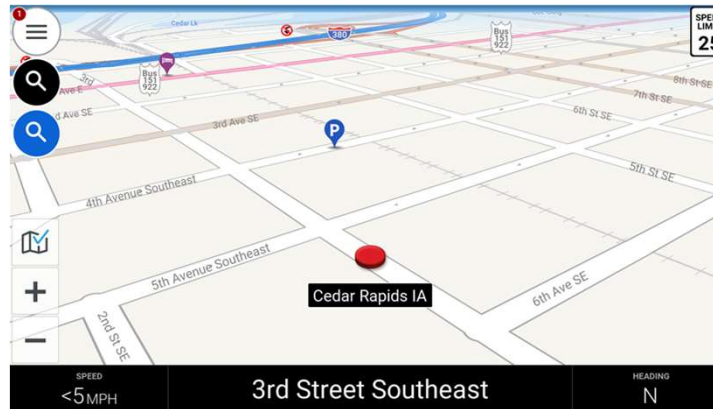
CoPilot 10.7.2 Enhancements

- Driver Map Feedback
- Truck Specific Speed Limits
- Mute Button On-Screen



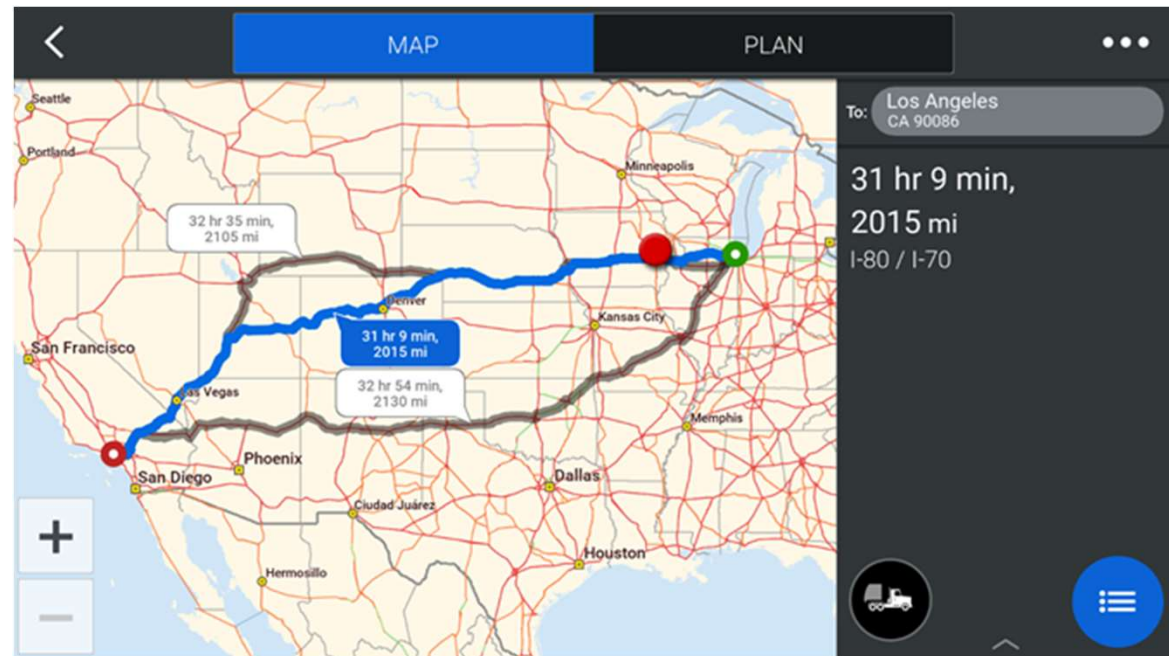
Enhanced User Interface

The CoPilot User Interface (UI) has been redesigned and updated to provide a new look and feel to CoPilot. The modified design allows for a quicker user experience, with less clicks necessary to reach a particular feature as well as larger buttons for improved ease of use. The graphics have been developed to provide an enhanced engine within CoPilot deployments implementing Open GL. This allows for an improved graphics and enhanced map layer display.



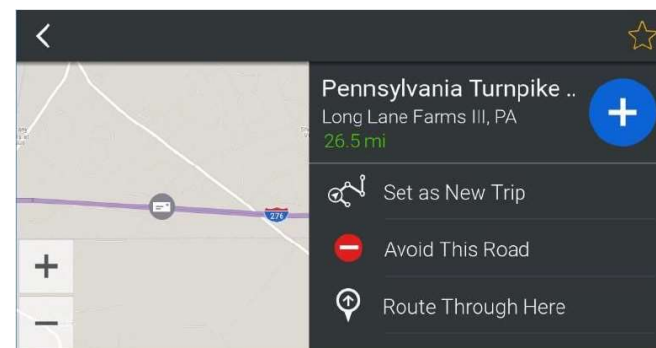
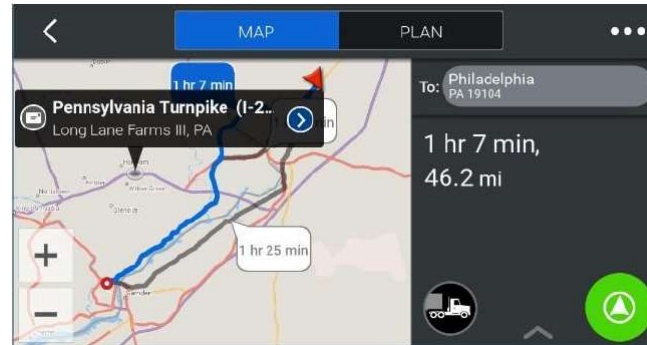
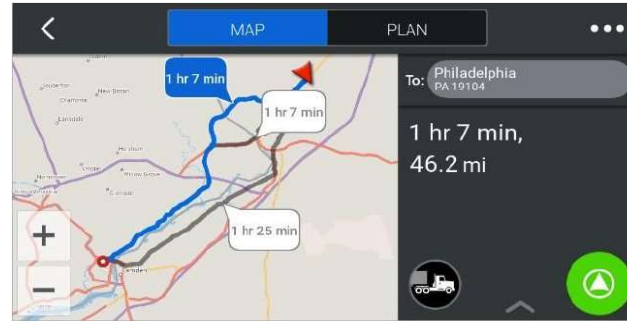
Alternate Route

Additional improvements to the UI include the automatic display of alternate routes when viewing your route. Alternate routes are shown with the ETA calculations for easy comparison.



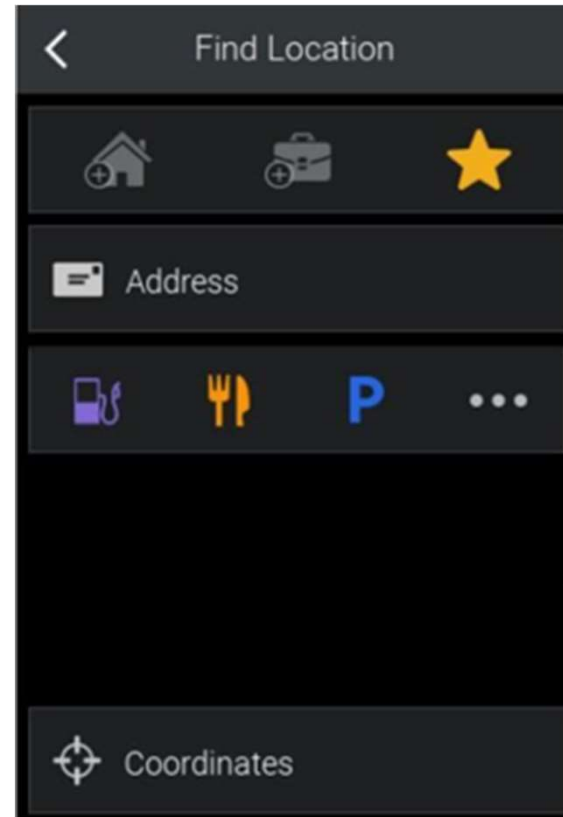
Adding Waypoints

The option to drag your route has been replaced with the option to select a location directly on the map to route through, or avoid. Once a point on the map has been selected, users can expand the option, indicated by the blue arrow icon on the map screen above. This will then allow the user to select Set as New Trip, Avoid This Road, or Route Through Here.



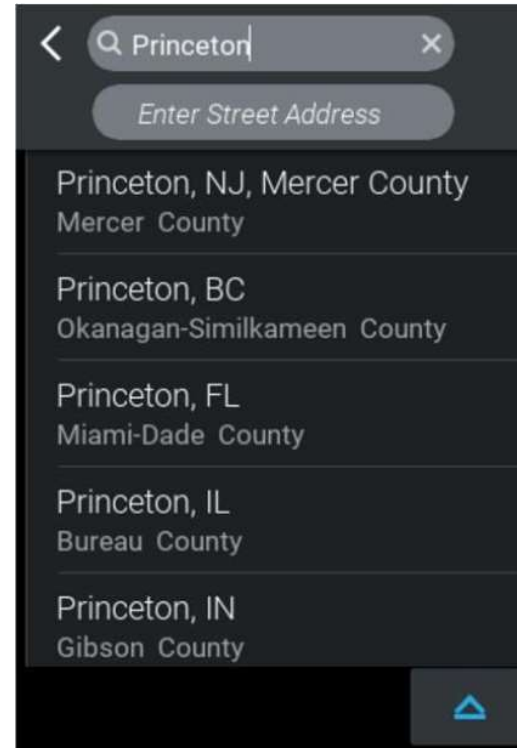
Destination Search

Searching for a destination is now even easier and can be found by selecting the search magnifying glass icon. Once you have selected the search icon, you will be taken to the new CoPilot search screen. Here you can find a destination by searching through various means, including saved favorites, address search and POIs.



Address Entry

The address entry screen has been updated to allow users to easily geocode locations. As shown in the screenshot, the ability to enter the city and street address on the same screen has been included.



Redesigned Menus

Menus have been redesigned into grid displays. This includes the Settings Menu which provides all settings options available to users. These categories have been refined to provide the easiest way to find the appropriate setting. Combining settings into groups allows for easier identification and customization.

